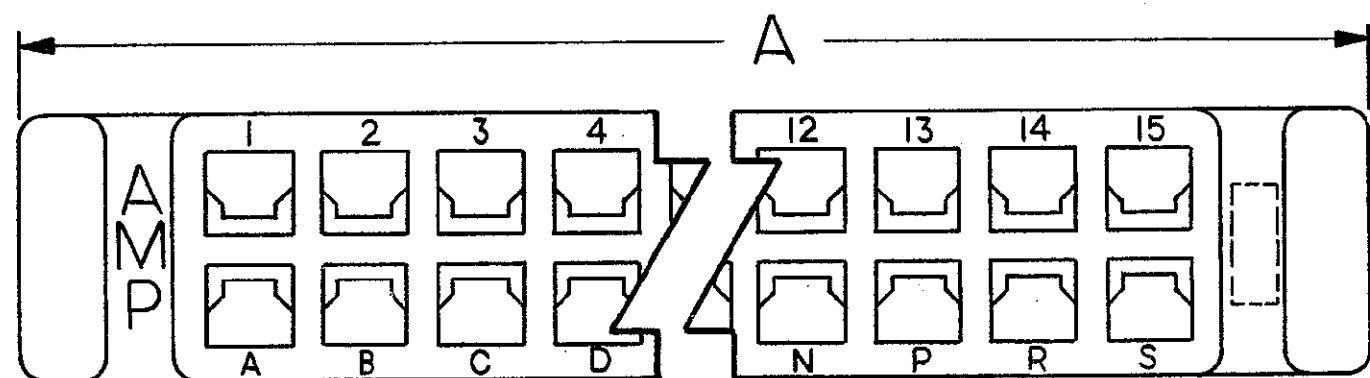
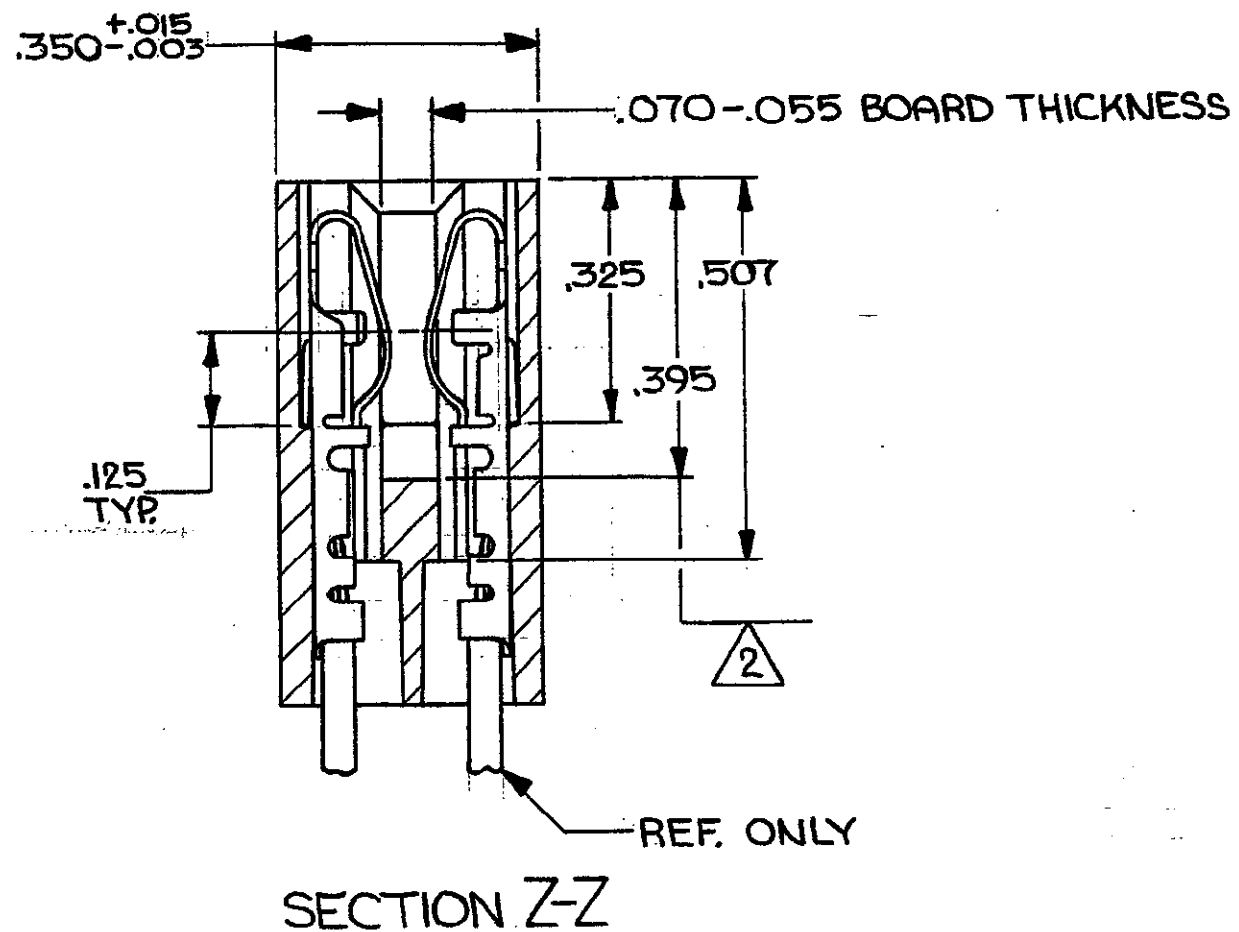
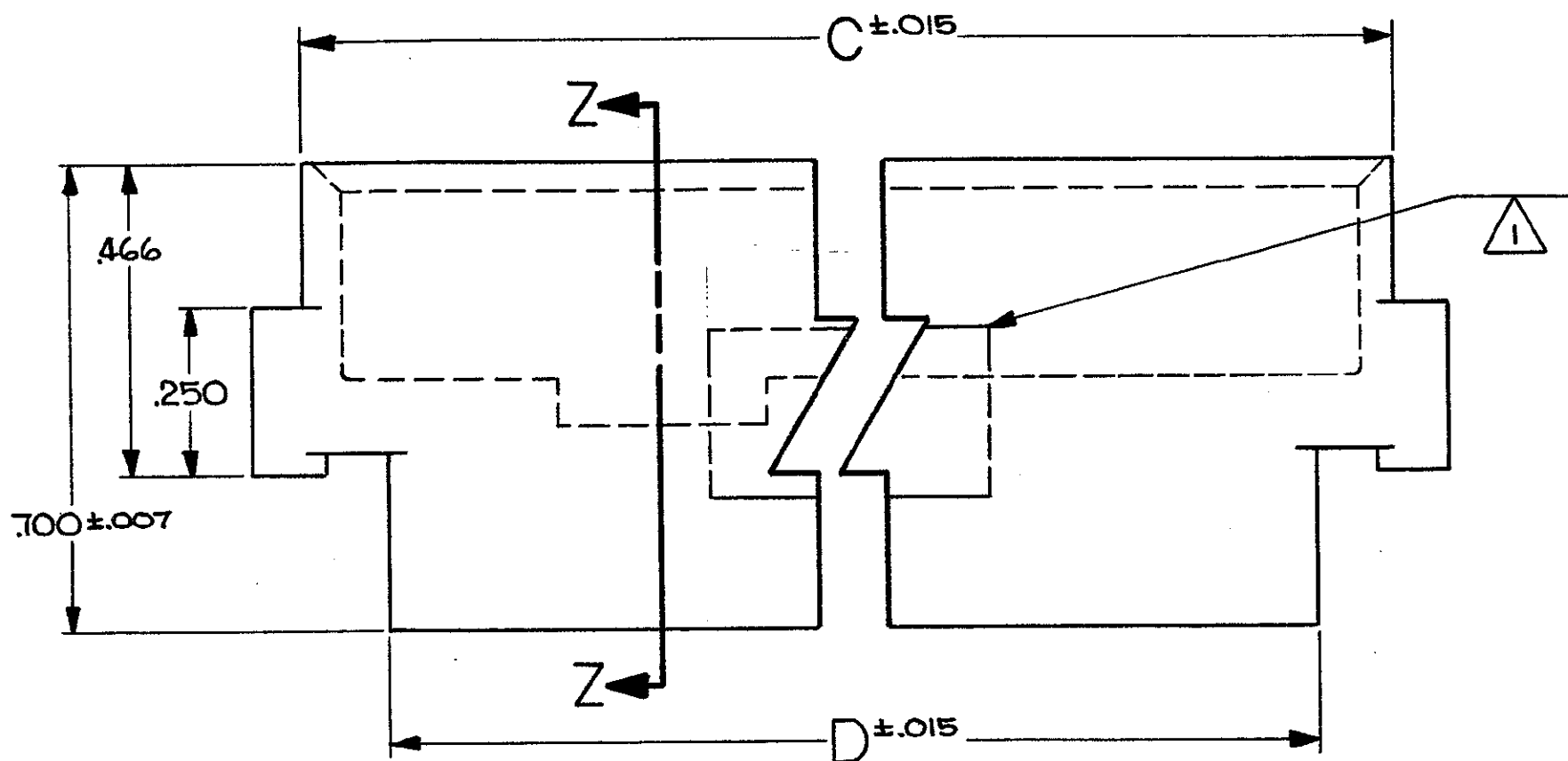
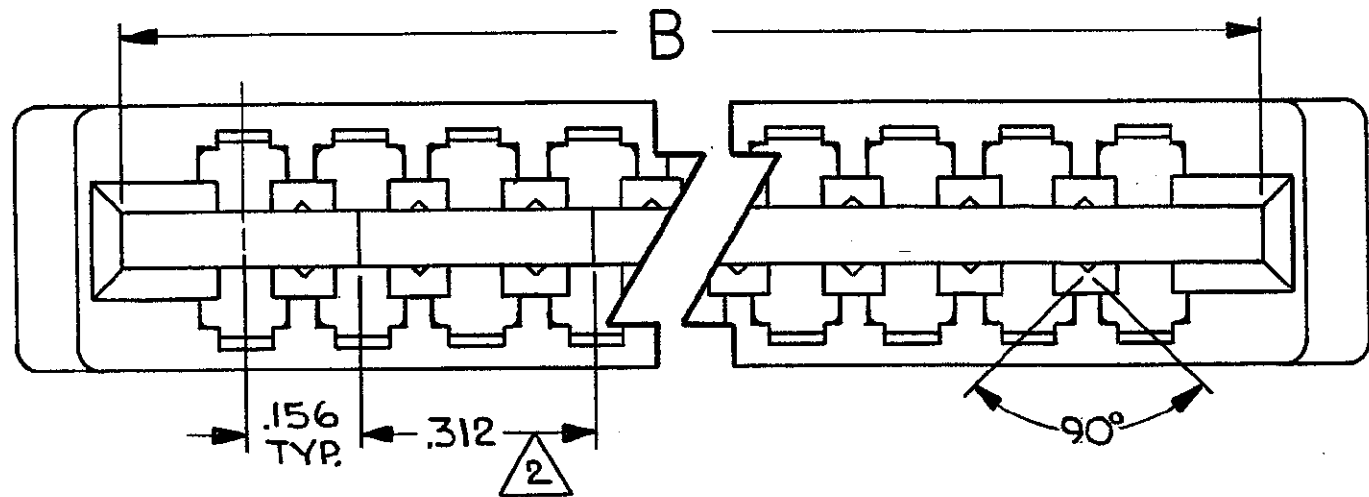


© COPYRIGHT 1980 BY AMP INCORPORATED, HARRISBURG, PA.
 ALL INTERNATIONAL RIGHTS RESERVED. AMP INCORPORATED PRODUCTS
 COVERED BY U. S. AND FOREIGN PATENTS AND/OR PATENTS PENDING.

REVISIONS						
P	F	ZONE	LTR	DESCRIPTION	DATE	APPROVED
			0	WAS 5112-426		
01			01	REVISED PER 7239	A.M.S. 3-9-81	
		A		REV PER EC 0320-344-97	25 NOV 97	NS



1 "AMP", PART NUMBER, & DATE CODE THIS AREA.
 2 THIS AREA IS RECESSED .070 BELOW DEPTH OF CARD SLOT.

UNLESS OTHERWISE SPECIFIED DIMENSIONS ARE IN INCHES. TOLERANCES ON: DECIMALS ±.010 ANGLES ±	CONTRACT NO	531271-2					531271-1
	DR <i>A.M. SHARPE</i> 9-9-80	D	C	B	A	NO. OF POS. 15	PART NO
MATERIAL FIBERITE 4004 COLOR-BLACK	CHK <i>M. Smith</i> 9-10-80	AMP INCORPORATED Harrisburg, Pa.					
FINISH //	APPD <i>S. E. Shyer</i> 9-12-80	NAME HOUSING, AMP LEAF, MODIFIED EAR AND CARD SLOT					
	DESIGN APPD <i>Jim Ruelle</i> 9-12-80	C	00779	DRAWING NO 531271			
	OTHER APPD	SCALE 4:1		SHEET 1 OF 1			

单击下面可查看定价，库存，交付和生命周期等信息

[>>TE Connectivity\(泰科\)](#)