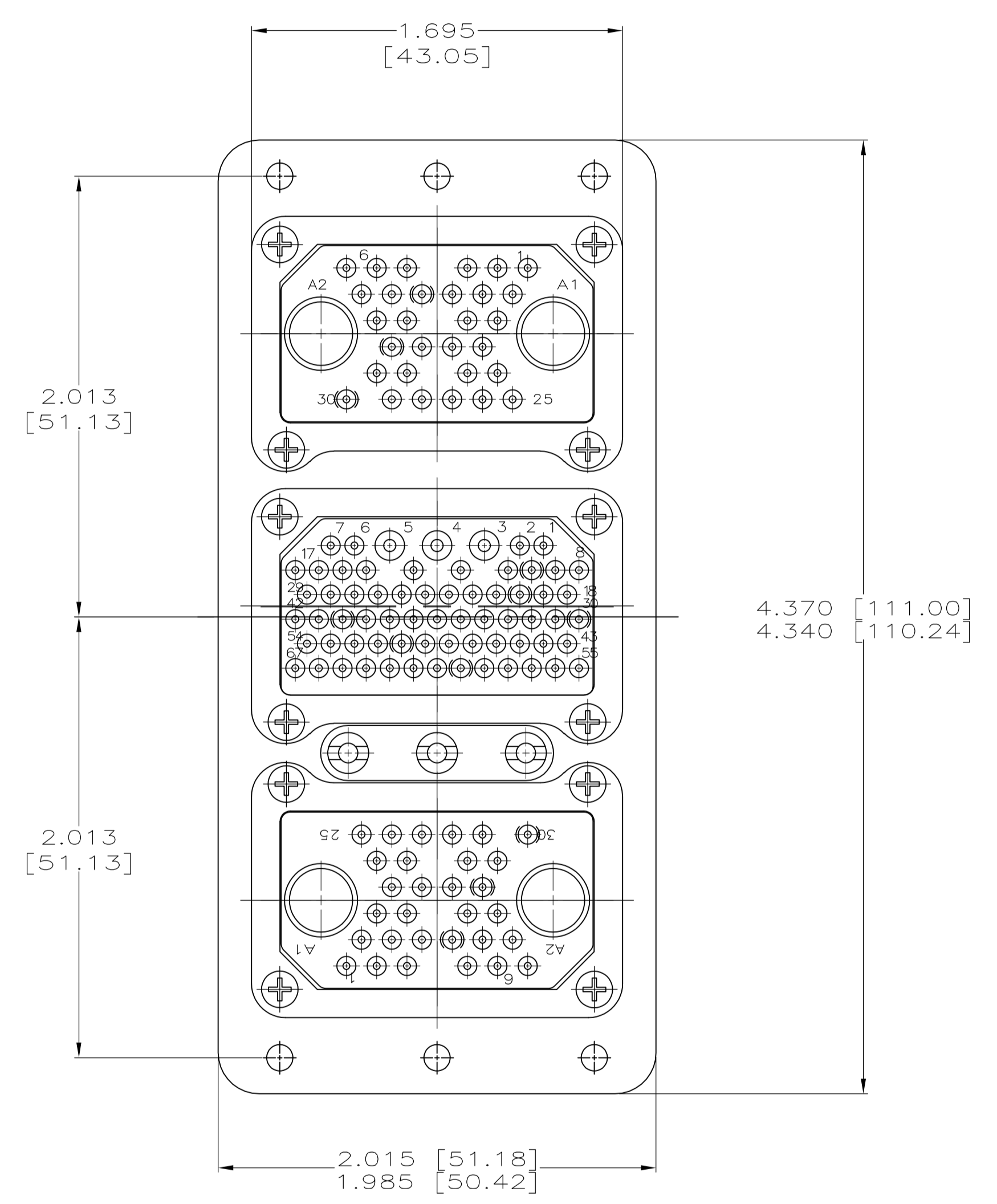
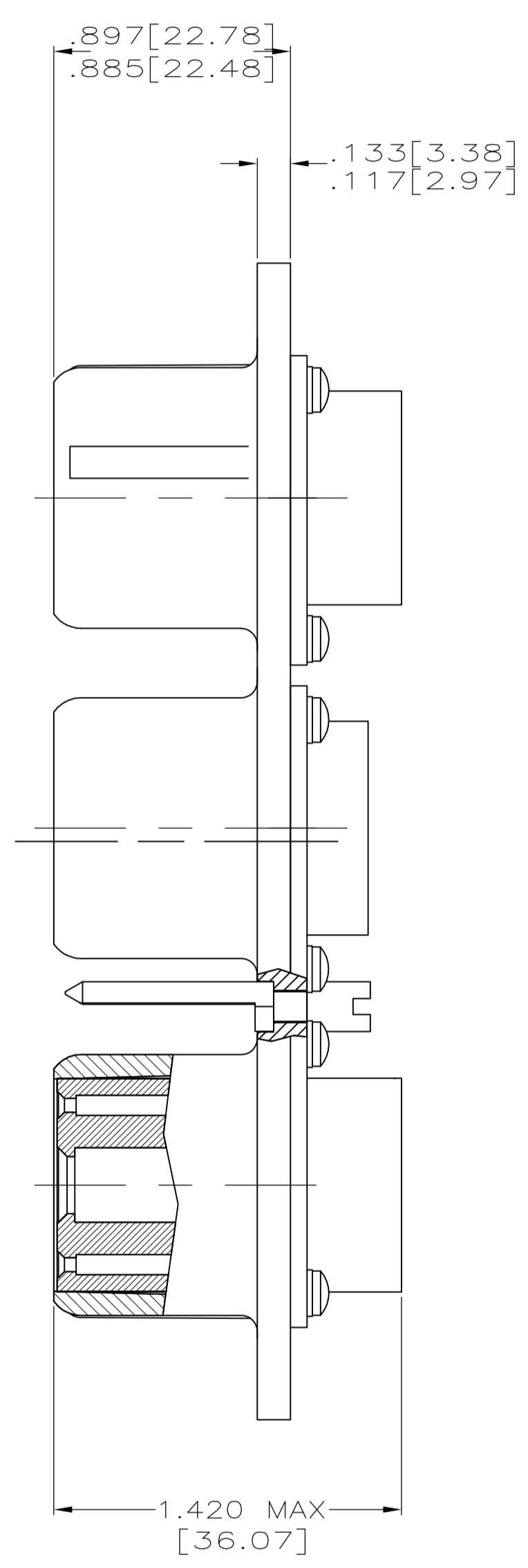
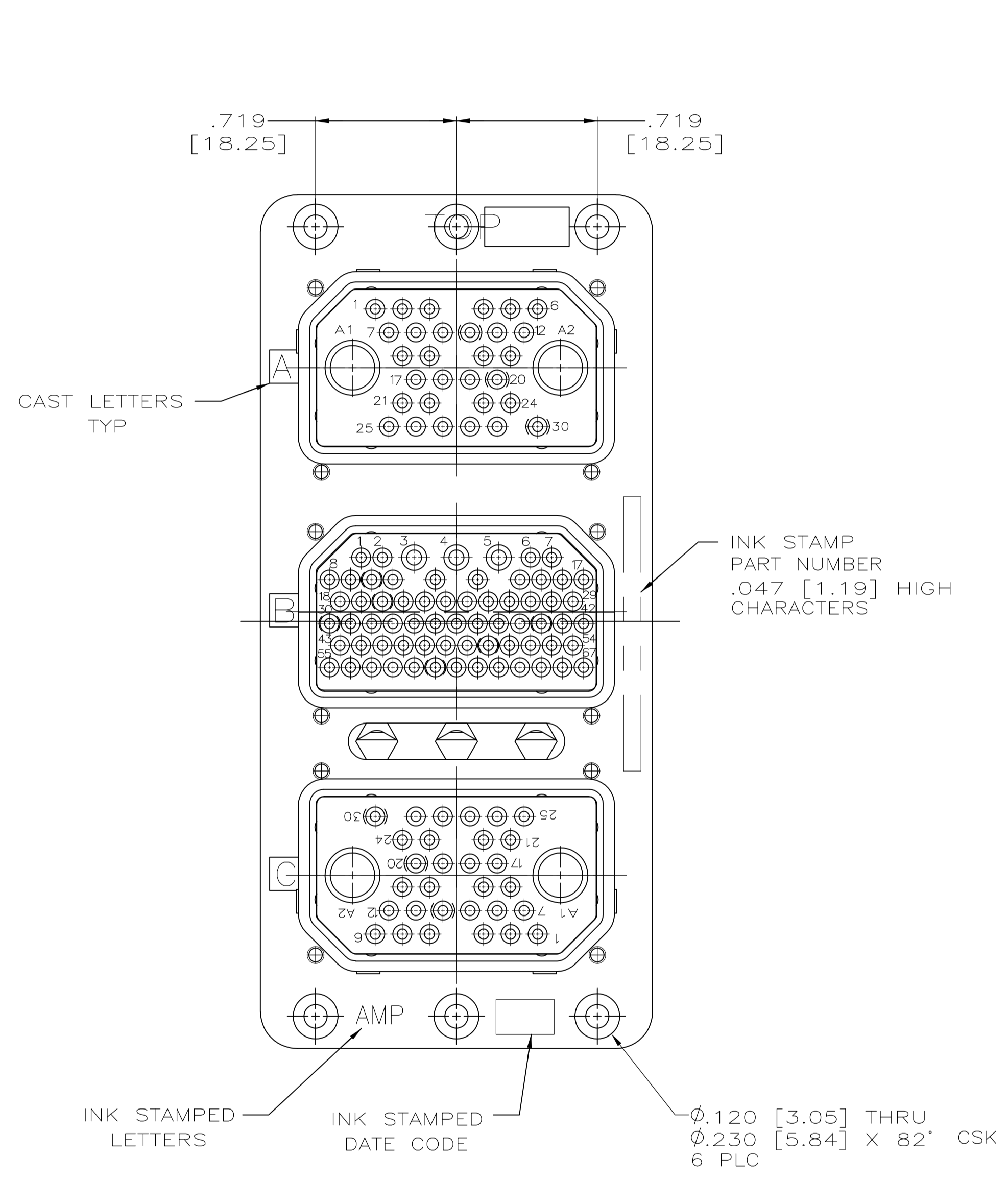


LOC		DIST		REVISIONS			
DF	AO	REV	DESCRIPTION	DATE	BY	APPV	
A		1	REV PER ECO-12-021058	06DEC12	PY	DE	

1. MATERIAL AND FINISH:
 SHELL: DIE CAST ALUMINUM ALLOY PER FED. SPEC QQ-A-591.
 STANDARD FINISH: CADMIUM PLATE PER QQ-P-416, TYPE 1,
 CLASS 2 YELLOW CHROMATE CONVERSION.
 INSERT RETENTION PLATE: ALUMINUM ALLOY, BLUE ANODIZE
 PER MIL-A-8625.
 SCREWS AND WASHERS: STAINLESS STEEL, PASSIVATED.
 POLARIZING POSTS: STAINLESS STEEL, PASSIVATED.
 POLARIZING NUTS: BRASS, CADMIUM PLATED.



THIS DRAWING IS A CONTROLLED DOCUMENT.		DWG T. THOMPSON 08JUL98	TE Connectivity	
DIMENSIONS: INCHES		CHK R. GROSS 08JUL98	NAME RM3P32C2S67S32C2S-0001 (201) WITH COAX	
TOLERANCES UNLESS OTHERWISE SPECIFIED:		APPV R. GROSS 08JUL98	RESTRICTED TO	
0 PLC ± .005		PRODUCT SPEC	SIZE A1	
1 PLC ± .005		APPLICATION SPEC	CAGE CODE 00779	
2 PLC ± .005		WEIGHT	DRAWING NO. 1218349	
3 PLC ± .005		MATERIAL SEE CALLOUT	SCALE 2:1	
4 PLC ± .005		FINISH SEE CALLOUT	SHEET 1 OF 1	
ANGLES ± .005		CUSTOMER DRAWING	REV A	

单击下面可查看定价，库存，交付和生命周期等信息

[>>TE Connectivity\(泰科\)](#)