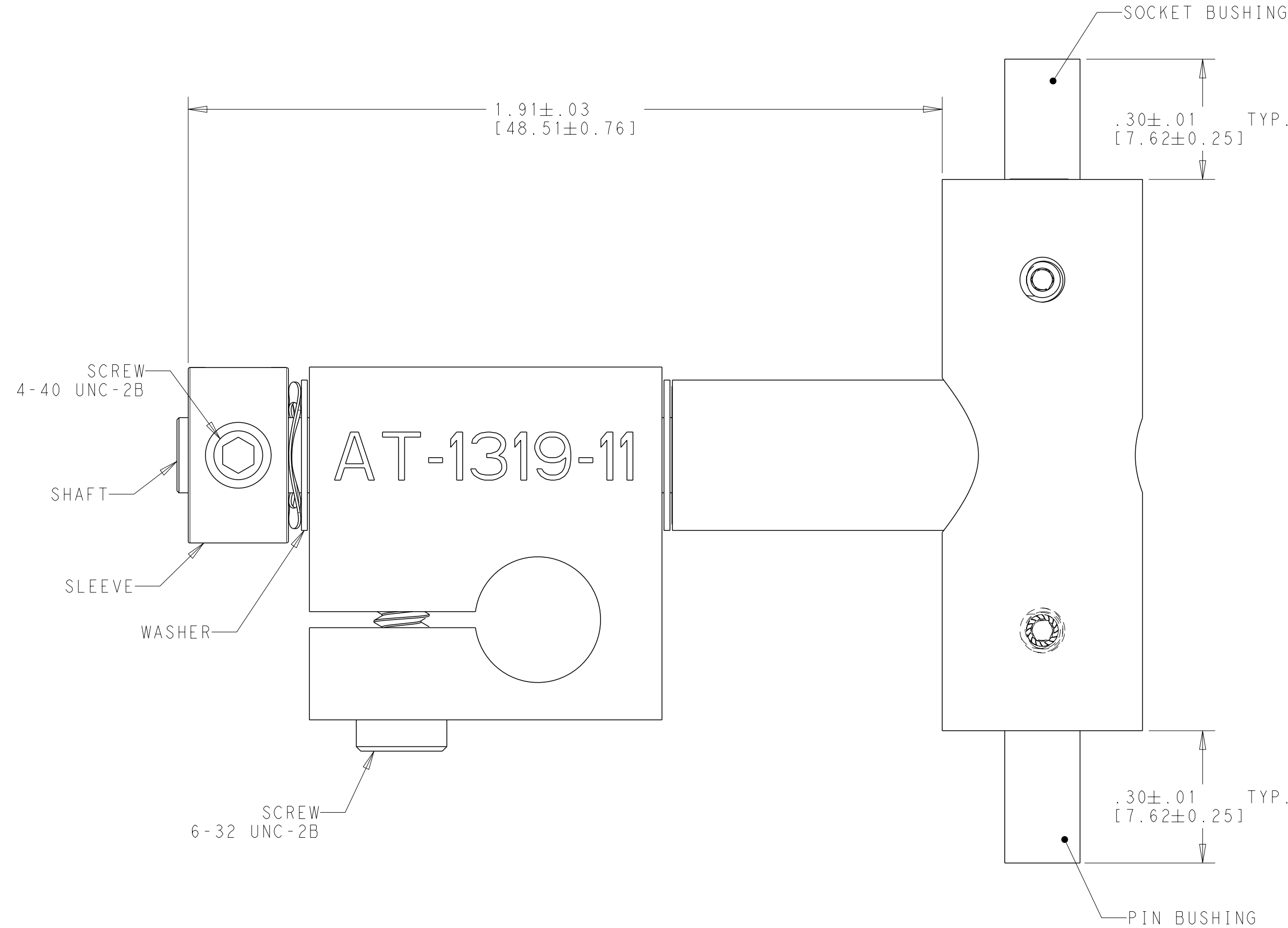
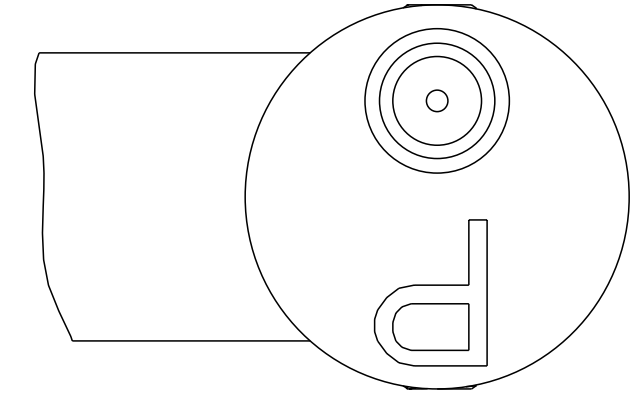
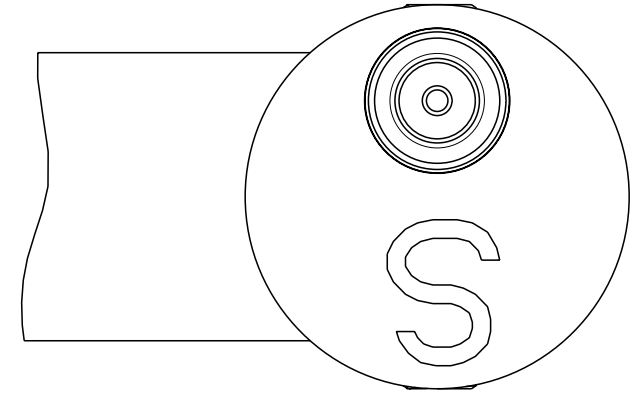


THIS DRAWING IS UNPUBLISHED. RELEASED FOR PUBLICATION
 © COPYRIGHT TE CONNECTIVITY ALL RIGHTS RESERVED.

REVISIONS					
P	LTR	DESCRIPTION	DATE	DWN	APVD
A		REVISED PER ECO-09-016603	15JUL2009	-	MH
B		REVISED PER ECO-16-001928	22FEB2016	AG	MP



NOTES:

- FOR TERMINATION INSTRUCTIONS AND APPLICATIONS SEE ENGINEERING STANDARD (ES-61161 FOR SIZE 12 CONTACTS D-602-16 (SOCKET) AND D-602-17 (PIN)).
- MATERIAL: ADAPTER HOUSING: ALUMINIUM 6061-T6 PER ASTM B221. FINISH: CLEAR ANODIZED.
 SHAFT, SLEEVE AND BUSHING HOUSING: 303 STAINLESS STEEL PER ASTM A484.
 BUSHING INNER STOP: BRASS 360 1/2 HARD PER ASTM B16/16M.
 WASHER: 18-8 STAINLESS STEEL.
 SCREW: 4-40 UNC-2B SOCKET SETSCREW, STAINLESS STEEL.
 6-32 UNC-2B SOCKET HEAD SCREW, STAINLESS STEEL.

#12 SOLDER TACT ADAPTER SUB-ASSEMBLY	993871-000
DESCRIPTION	PART NO.

THIS DRAWING IS A CONTROLLED DOCUMENT.		DWN A. GAD 22FEB2016	TE Connectivity	
DIMENSIONS: INCHES [mm]		CHK N. NAGAR 22FEB2016		
TOLERANCES UNLESS OTHERWISE SPECIFIED:		APVD M. POPE 22FEB2016	NAME ADAPTER ASSEMBLY PIN AND SOCKET HOLDING FIXTURE FOR SIZE 12, SOLDER TACT	
0 PLC ±	1 PLC ±	PRODUCT SPEC	SIZE	RESTRICTED TO
2 PLC ±.01 [.25]	3 PLC ±.005 [.13]	APPLICATION SPEC	A206090	-
4 PLC ±	ANGLES ±	FINISH	CAGE CODE	DRAWING NO
MATERIAL		WEIGHT	A206090	AT-1319-11
		CUSTOMER DRAWING	SCALE	SHEET 1 OF 1
			NTS	REV B

单击下面可查看定价，库存，交付和生命周期等信息

[>>TE Connectivity\(泰科\)](#)