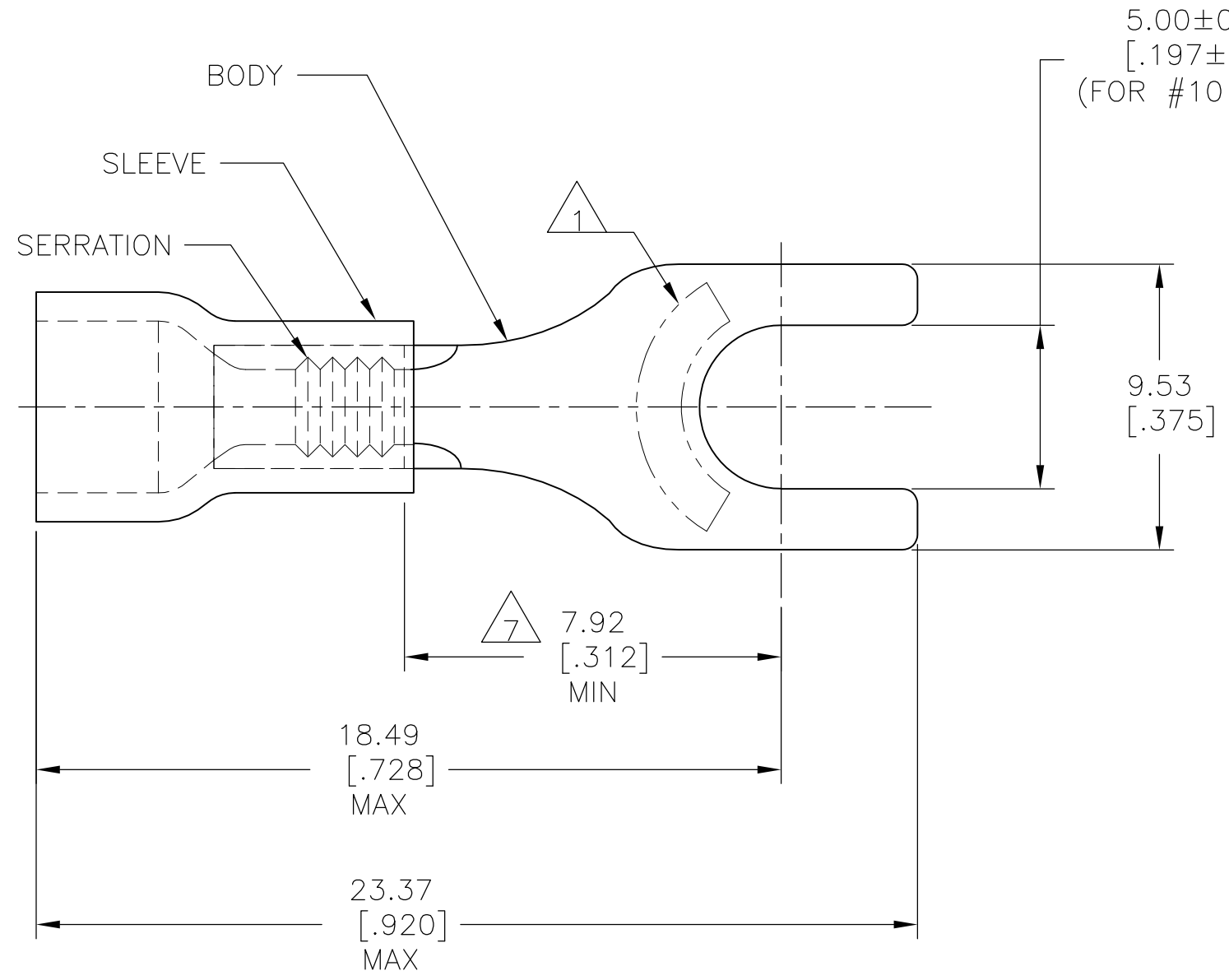


THIS DRAWING IS UNPUBLISHED. RELEASED FOR PUBLICATION
 © COPYRIGHT - By - ALL RIGHTS RESERVED.

REVISIONS				
P	LTR	DESCRIPTION	DATE	APVD
	L2	REVISED PER ECO-16-007363	16JUN2016	NK DR

AMP WIRE RANGE	Listed FILE E13288	LR7189 Certified
22-16 AWG SOLID OR STRANDED	22-16 AWG SOLID OR STRANDED	22-16 AWG SOLID OR STRANDED



- 1 STAMP AMP 22-18* APPROX AS SHOWN
22-16 TERMINALS ARE STAMPED 22-18 IN
ACCORDANCE WITH MILITARY SPEC SAE AS7928
COMMERCIAL WIRE RANGE IS 22-16.
- 2 WIRE INSULATION DIA: 2.67-3.56 [.105-.140].
- 3 TONGUE MATERIAL THICKNESS: 0.79±0.05 [.031±.002].
- 4 NOTE DELETED.
- 5 MATERIAL: BODY - CU PER ASTM B152
SLEEVE - PVC, COLOR - RED.
- 6 FINISH: BODY - TIN PLATE PER ASTM B545,
0.00254[.000100] MIN EXT. THICKNESS.
- 7 APPLIES FROM EDGE OF METAL WIRE BARREL TO CENTER
OF STUD HOLE.

100	LOOSE PIECE, BOX	8-34156-1
5000	ON TAPE, REEL	2-34156-1
1000	LOOSE PIECE	34156
QTY	PACKAGE TYPE	PART NO

AMP INCORPORATED
CUSTOMER SERVICE SYSTEMS

FOR ADDITIONAL PRODUCT INFORMATION OR COPIES OF DRAWINGS AND TECHNICAL DOCUMENTS	PRODUCT INFORMATION CENTER 1-800-522-6752
FOR APPLICATION TOOLING INFORMATION	TOOLING ASSISTANCE CENTER 1-800-722-1111
FOR ORDER ENTRY	1-800-526-5142

MAX RECOMMENDED OPERATING TEMPERATURE: 105°C [221°F]
VOLTAGE RATING: 600V MAX (1000V FIXTURE OR SIGN)
CIRCULAR MIL AREA: 0.26-1.65mm²[509-3260] SOLID OR STRANDED

THIS DRAWING IS A CONTROLLED DOCUMENT.	
DIMENSIONS: mm [INCHES]	TOLERANCES UNLESS OTHERWISE SPECIFIED:
	0 PLC ± - 1 PLC ± - 2 PLC ± 0.20 [.008] 3 PLC ± - 4 PLC ± - ANGLES ± -
MATERIAL 5	FINISH 6

DWN G VINSON 07NOV94	TE Connectivity	NAME		
CHK M ELLIS 07NOV94		TERMINAL, SPADE, PLASTI-GRIP WIRE SIZE: 22-16 AWG		
APVD G NGO 07NOV94		SIZE	CAGE CODE	DRAWING NO
PRODUCT SPEC UL 486A		A3	00779	C-34156
APPLICATION SPEC	RESTRICTED TO	-		
WEIGHT -	CUSTOMER DRAWING	SCALE 6:1	SHEET 1 OF 1	REV L2

单击下面可查看定价，库存，交付和生命周期等信息

[>>TE Connectivity\(泰科\)](#)