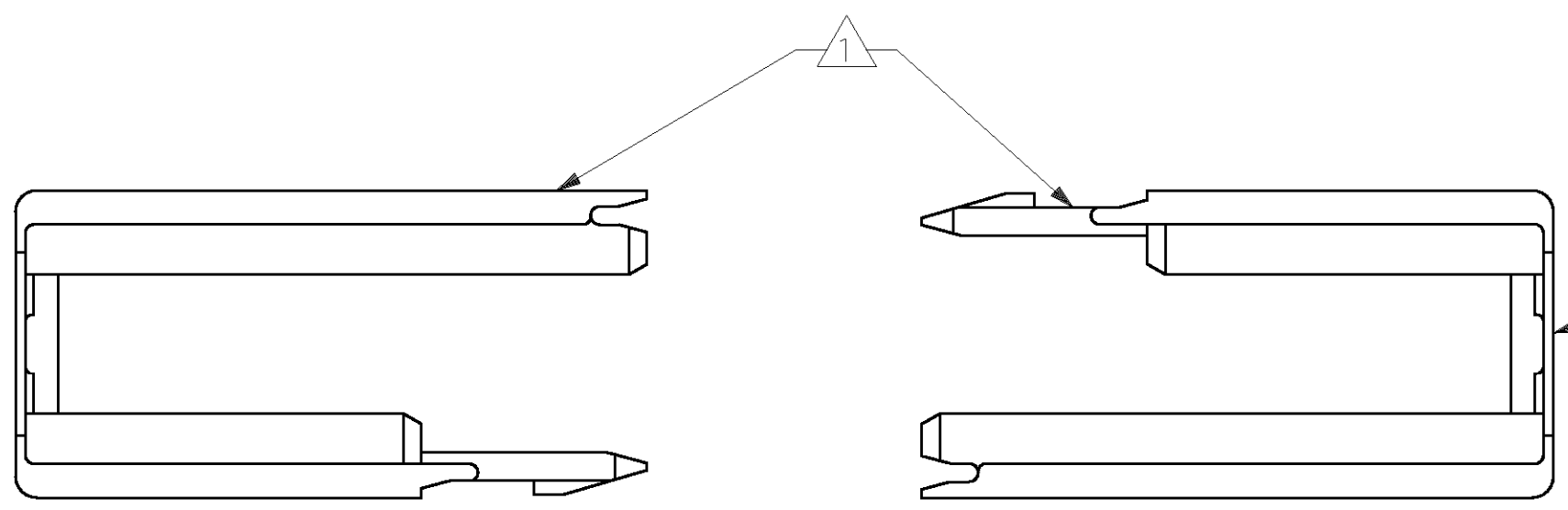
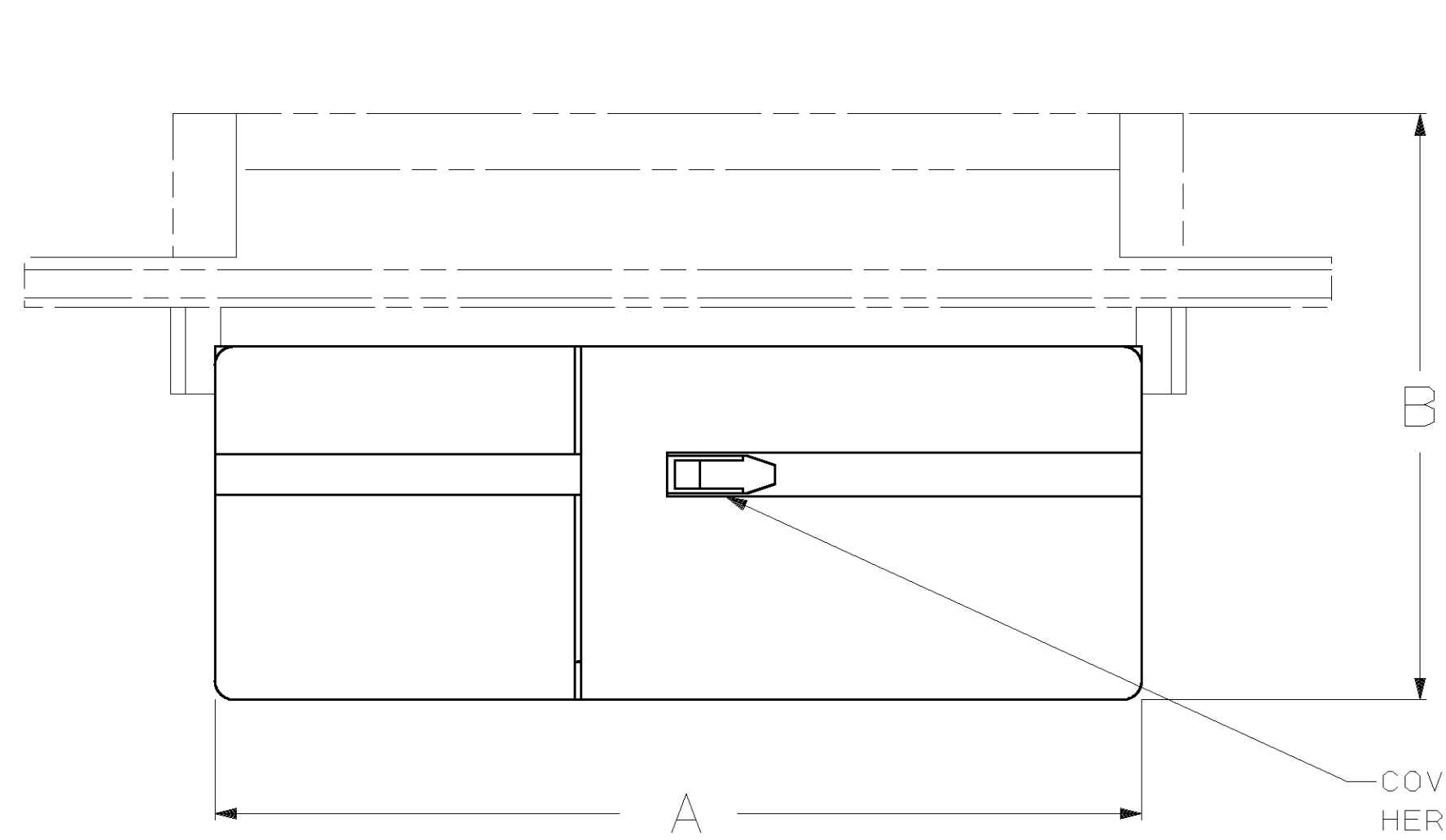


THIS DRAWING IS UNPUBLISHED. RELEASED FOR PUBLICATION  
 (C) COPYRIGHT 19 BY AMP INCORPORATED. ALL RIGHTS RESERVED.

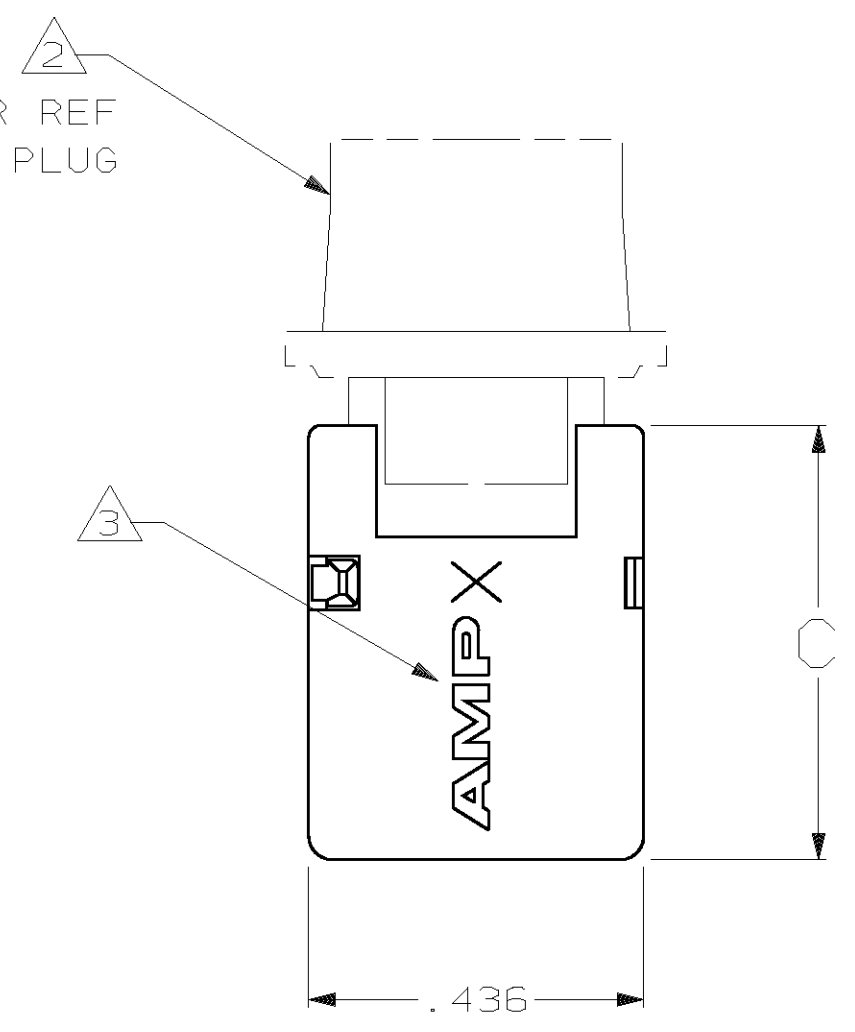
LOC		DIST		REVISIONS			
P	LTR	DESCRIPTION	DATE	DWN	APVD		
GP	00						
E		REV PER EC OUE0-0002-01	15 JAN 02	JR	JG		



EACH KIT CONSISTS OF 2 IDENTICAL HALVES, WHICH SNAP TOGETHER OVER CONNECTOR.



CONNECTOR REF RECEPTACLE OR PLUG



COVER HALVES LATCH HERE & ON FAR SIDE

- ① PARTS TO BE PACKAGED UNASSEMBLED.
- ② BACK COVER FITS HDE-20 TYPE CONNECTORS, BOTH ALL-PLASTIC & METAL SHELL ASSEMBLIES.
- ③ "AMP" AND SIZE NUMBER MOLDED.
- ④ THERMOPLASTIC, UNFILLED, 94V-1 RATED, BLACK.
- ⑤ OBSOLETE

OBSOLETE	SPECIAL		.934	2	15	1-745530-0		
	.565	.540						
	.565	RCPT	PLUG	2.134	4	37	⑤ 745530-8	745530-4
	.565			1.482	3	25	⑤ 745530-7	745530-3
	.565	.902	.937	.934	2	15	⑤ 745530-6	745530-2
	.565			.610	1	9	745530-5	745530-1
	C	B	A	SIZE	POSN	BULK PACKED KIT NO	INDIVIDUAL KIT NO	

THIS DRAWING IS A CONTROLLED DOCUMENT FOR AMP INCORPORATED. IT IS SUBJECT TO CHANGE AND THE CONTROLLING ENGINEERING ORGANIZATION SHOULD BE CONTACTED FOR THE LATEST REVISION.

DIMENSIONS: INCHES	TOLERANCES UNLESS OTHERWISE SPECIFIED:	DWN J.GALLUCCI BG 14 MAY 90	AMP Incorporated Harrisburg, PA 17105-3608
	0 PLC ± 1 PLC ± 2 PLC ± 3 PLC ±.015 4 PLC ± ANGLES ± FINISH -	CHK J.E.WESTMAN 9 JUL 95 APVD J.ASSINI 16 JUL 90	
MATERIAL ④		NAME	KIT, BACK COVER, LOW PROFILE, SLIDE-ON, AMPLIMITETM HDE-20
		PRODUCT SPEC	SIZE A2 CAGE CODE 00779 DRAWING NO C-745530
		APPLICATION SPEC	SCALE 4:1 SHEET 1 OF 1 REV E
		WEIGHT	CUSTOMER DRAWING

单击下面可查看定价，库存，交付和生命周期等信息

[>>TE Connectivity\(泰科\)](#)