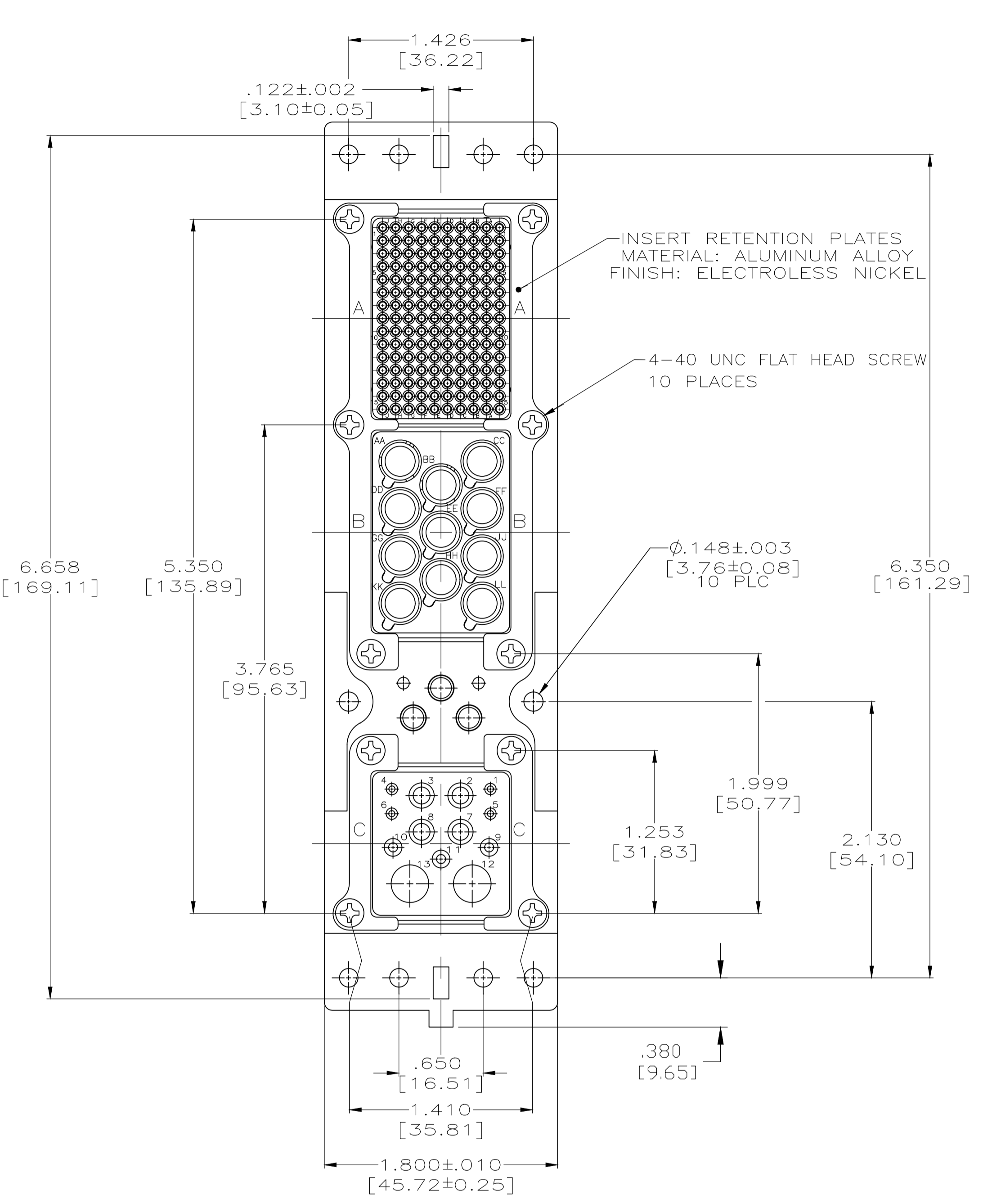
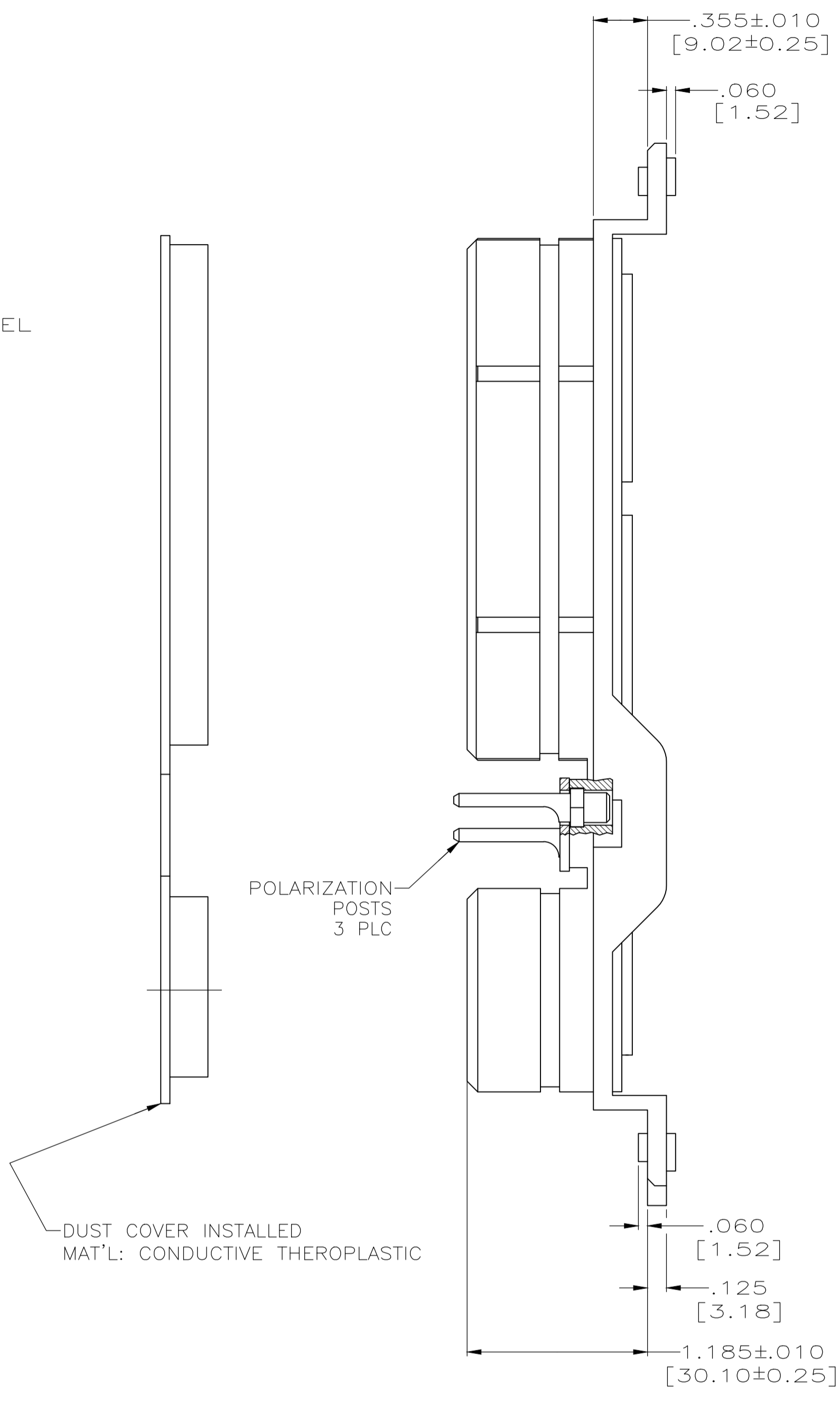
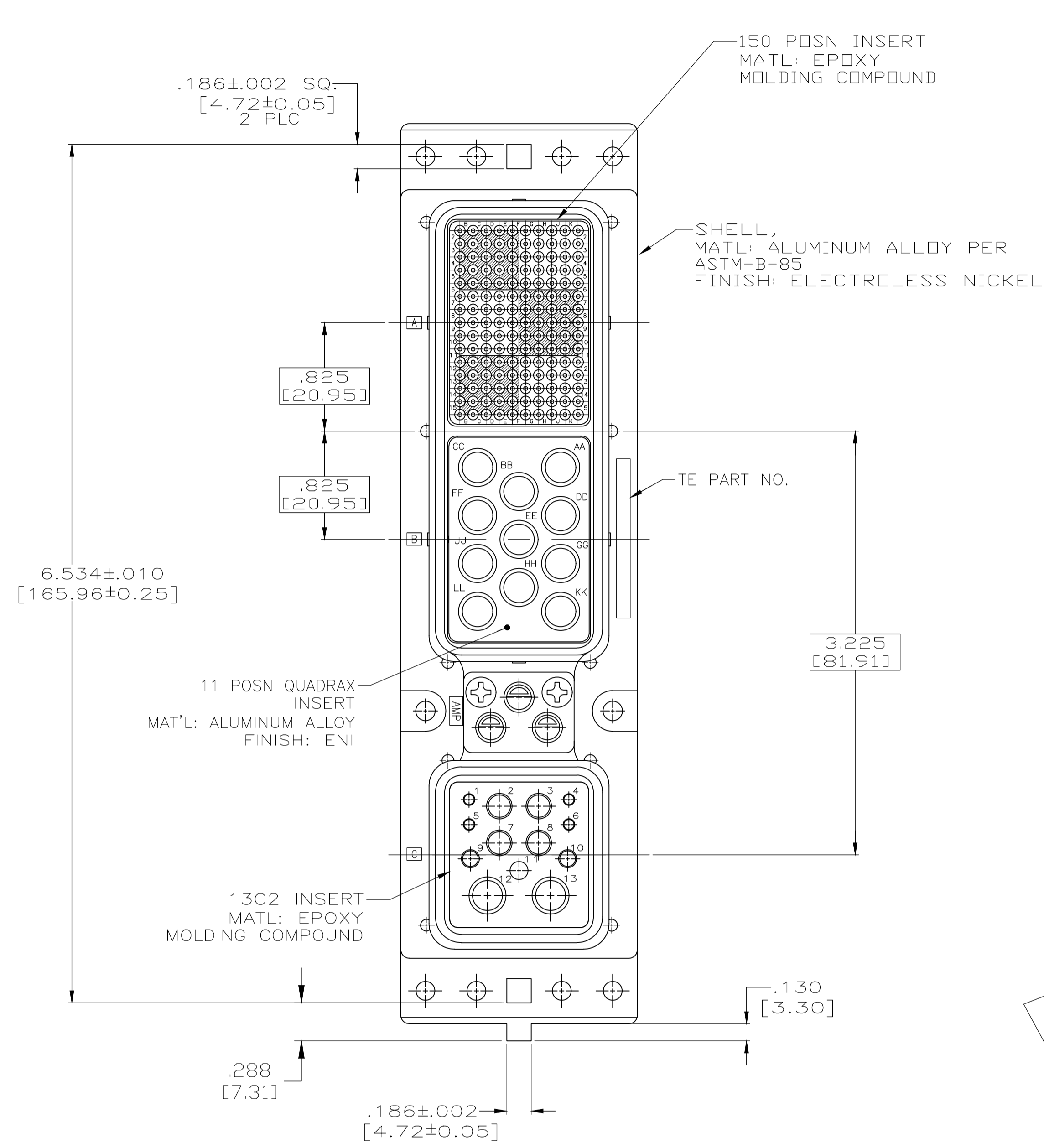


REVISIONS					
P	LTR	DESCRIPTION	DATE	DNW	APVD
E		REVISED PER ECO-17-015513	19DEC2017	PHM	CT



- CONNECTOR DIMENSIONS ARE PER ARINC 600 SPECIFICATIONS UNLESS OTHERWISE SPECIFIED.
- POLARIZING POSTS SHOWN IN POSITION "01" FOR ILLUSTRATION ONLY. CONNECTORS SHIPPED WITH KEYING INSTALLED IN POSITION PER TABLE.
- CLINCH NUTS INSTALLED IN FOUR CORNERS OF SHELL FOR -2 ONLY. (NOT SHOWN)
- CONTACTS NOT INSTALLED, SHIPPED IN A SEPARATE CONTAINER WITH CONNECTOR.

NO	KEYING POSITION	MODULE A: 208262-3 SIZE 22 (150) MODULE B: 1445693-1 (11) MODULE C: SIZE 20: 208267-2 (1) SIZE 12: 208273-2 (2)	PART NUMBER
	"88"		1484374-1
YES	"39"		1484374-2
	"88"		1484374-1
CLINCH NUTS	KEYING POSITION	CONTACTS INCLUDED NOT INSTALLED	PART NUMBER

THIS DRAWING IS A CONTROLLED DOCUMENT.

DIMENSIONS: INCHES	TOLERANCES UNLESS OTHERWISE SPECIFIED: 0 PLC ± - 1 PLC ± - 2 PLC ± - 3 PLC ± .005 (0.13) 4 PLC ± - ANGLES ± -	FINISH: SEE CALLOUTS	APVD: S. GLATFELTER	DATE: 12-13-01	NAME: PLUG ASSY. SIZE 2, REAR RELEASE, ARINC 600 WITH QUADRAX CONTACTS
MATERIAL: SEE CALLOUTS	WEIGHT: -	SCALE: 3:2	CAGE CODE: A100779	DRAWING NO: 1484374	RESTRICTED TO: -
CUSTOMER DRAWING			SHEET 1 OF 1 REV E		

STE TE Connectivity

单击下面可查看定价，库存，交付和生命周期等信息

[>>TE Connectivity\(泰科\)](#)