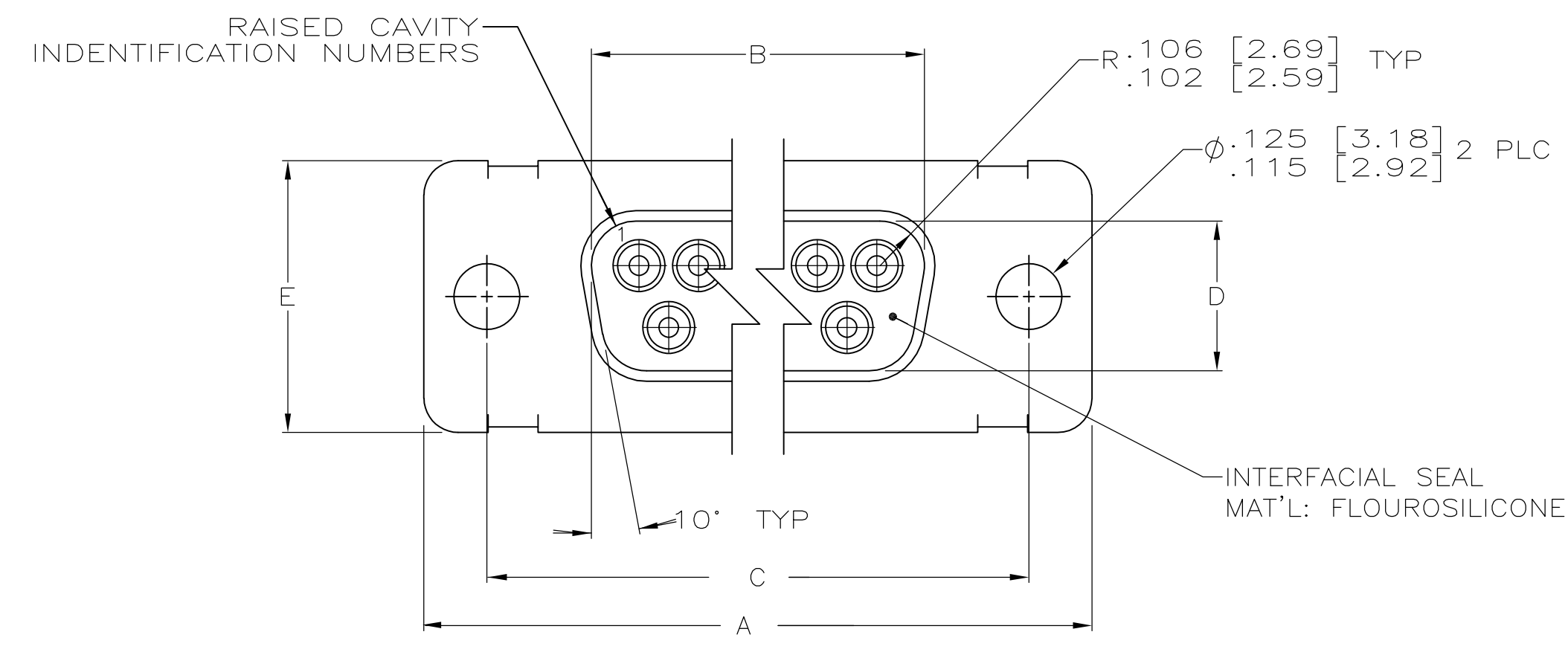
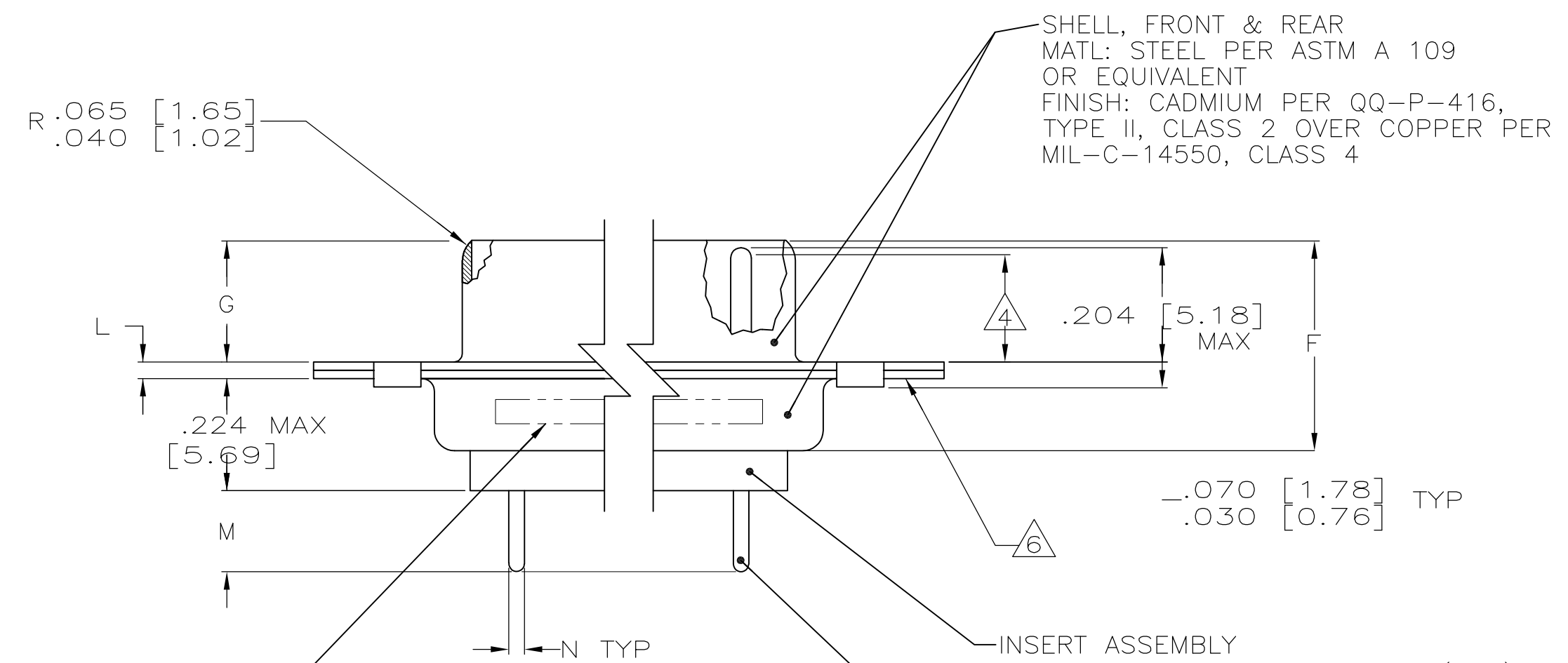


REVISONS		DATE	DWN	APVD
REV	DESCRIPTION			
A	REV PER ECO-09-25654	24NOV09	PY	DM



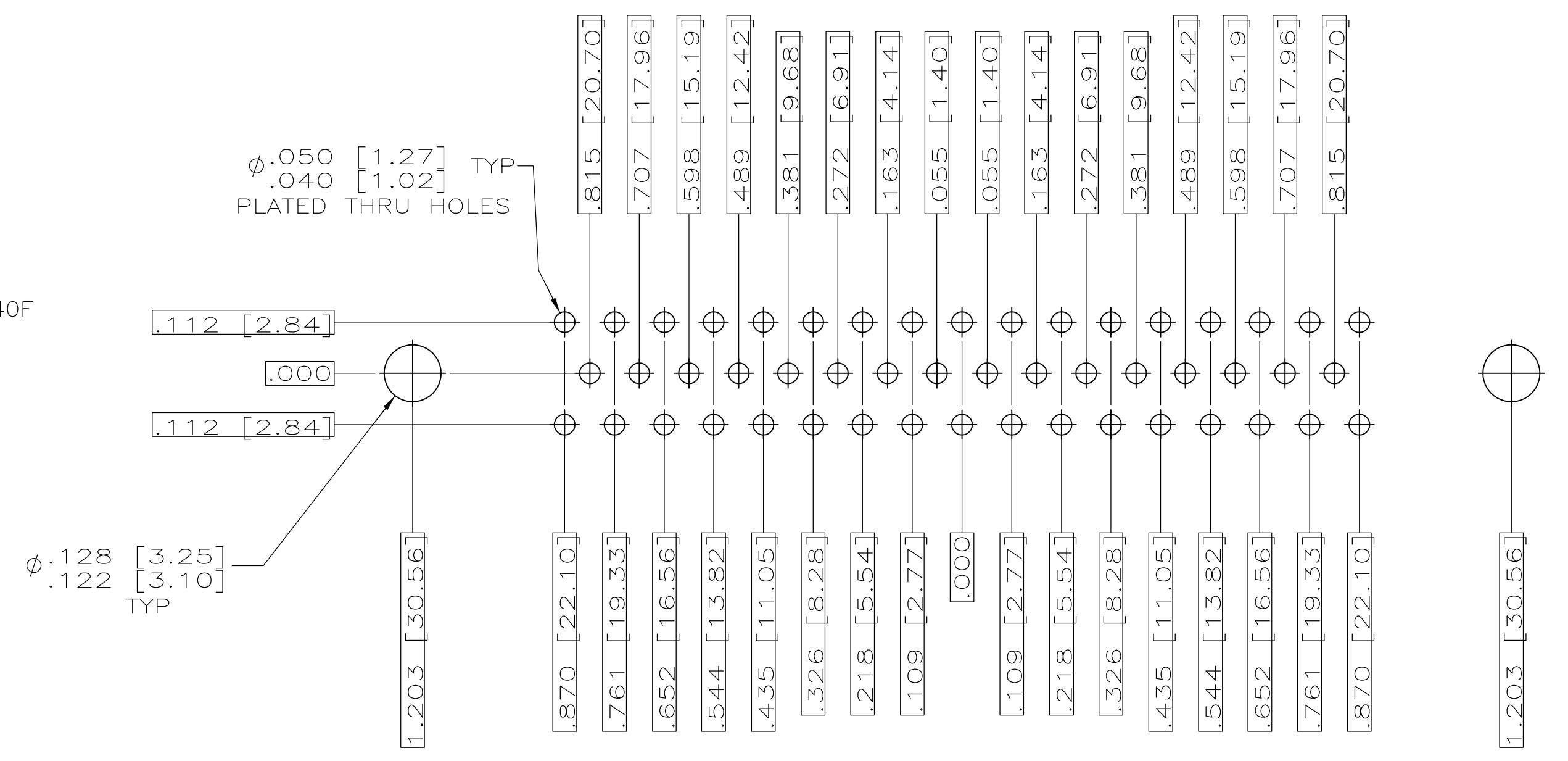
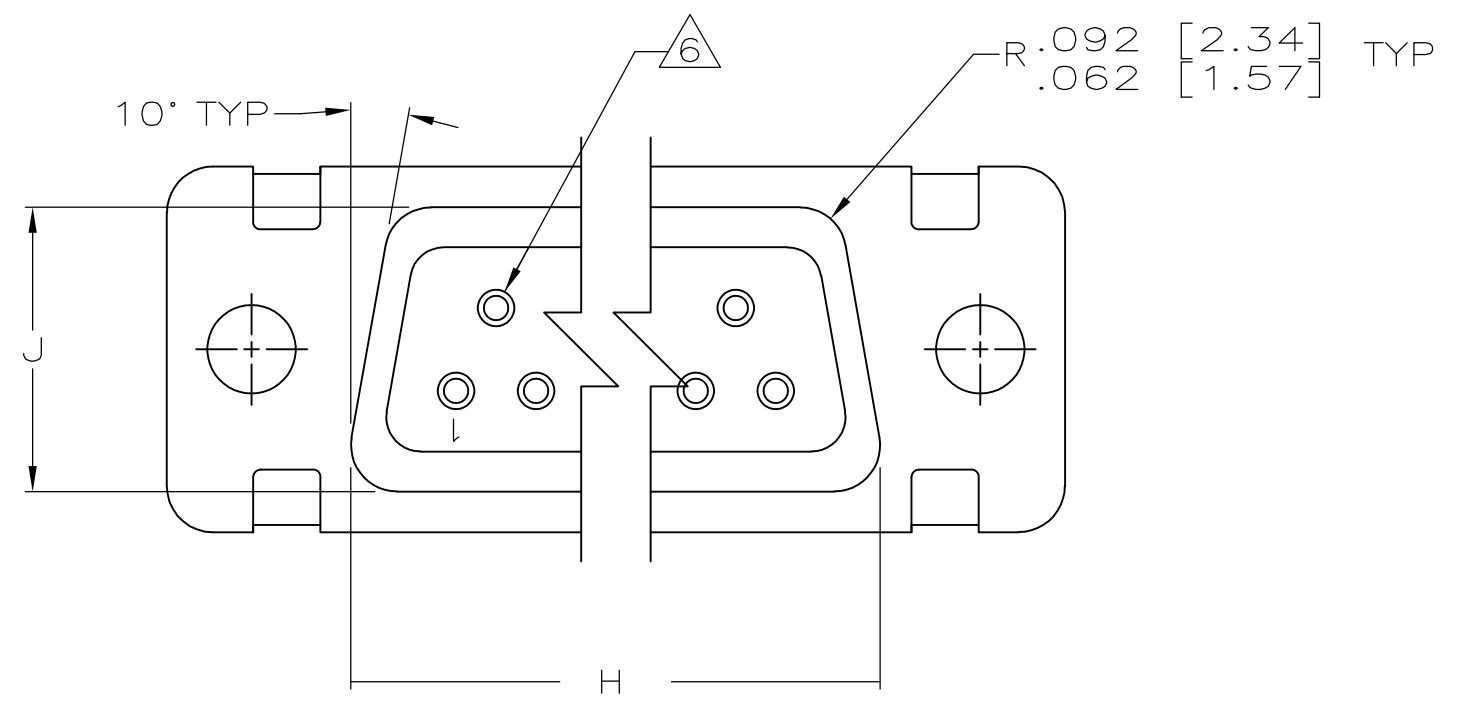
- 1 TRUE POSITION TOLERANCE FOR P.C.BOARD LAYOUT IS .010 [0.25] AT MAX MATERIAL CONDITION. SUGGESTED BOARD THICKNESS IS .094 [2.39]
- 2 THE CONNECTORS DESCRIBED IN THIS DOCUMENT MEET THE REQUIREMENTS OF MIL-C-24308 AND MATE WITH ANY RECEPTACLE CONNECTOR WITH SAME INSERT ARRANGEMENT.
- 3 MARK WITH .047 [1.19]-.062 [1.57] HIGH CHARACTERS. FAR SIDE REFERS TO THE WIDE SIDE OF THE KEYSTONE. NEAR SIDE REFERS TO THE NARROW SIDE OF THE KEYSTONE. IF THE REAR SHELL IS TOO SMALL FOR "AMP", AMP PART NUMBER AND DATE CODE, THEN SPLIT AS FOLLOWS:
 A. AMP PART NUMBER ON REAR SHELL, FAR SIDE.
 B. "AMP" AND DATE CODE ON FRONT SHELL, FAR SIDE.
- 4 REQUIREMENT FOR FULL PIN DIAMETER EXTENSION:
 .159 [4.04] MIN, SHELL SIZES 1 AND 2.
 .150 [3.81] MIN, SHELL SIZES 3, 4, AND 5.
- 5 THIS DRAWING SHALL BE INTERPRETED IN ACCORDANCE WITH APPLICABLE STANDARDS LISTED IN MIL-STD-100.
- 6 APPLY EPOXY BETWEEN THE CONTACT AND INSERT AND BETWEEN THE FRONT AND REAR SHELLS AND INSERT.



3 MARK TE, TE PART NO AND DATE CODE, FAR SIDE.

INSERT ASSEMBLY
 MATL: POLYPHENYLENE SULFIDE (PPS) PER MIL-M-24519, TYPE: GST-40F OR POLYESTER PER MIL-M-24519, TYPE: GLCP-30F
 COLOR, BLACK

CONTACT
 MATL: BRASS ALLOY PER ASTM B 16, OR BERYLLIUM COPPER 173, 1/2 HARD PER ASTM-B-197.
 FINISH: GOLD PER MIL-G-45204, TYPE II, GRADE C, CLASS 1 OVER NICKEL PER QQ-N-290, .000050 MIN THICK



RECOMMENDED P.C. BOARD LAYOUT SHELL SIZE 5 (50 POSITION) 1

.033 [0.84] .027 [0.69]	.176 [4.47] .136 [3.45]	.049 [1.24] .029 [0.74]	.544 [13.82] .524 [13.31]	2.188 [55.58] 2.168 [55.07]	.236 [5.99] .224 [5.69]	.436 [11.07] .416 [10.57]	.620 [15.75] .590 [14.99]	.446 [11.33] .436 [11.07]	2.411 [61.24] 2.401 [60.99]	2.084 [52.93] 2.074 [52.68]	2.650 [67.31] 2.620 [66.55]	MS18277-1	50	5	1663842-5	1663842-5
N	M	L	J	H	G	F	E	D	C	B	A	INSERT ARRANGEMENT	NO OF POS	SHELL SIZE	AMP P/N ON CONNECTOR	PART NUMBER

THIS DRAWING IS A CONTROLLED DOCUMENT.
 DIMENSIONS: INCHES [mm]
 TOLERANCES UNLESS OTHERWISE SPECIFIED:
 0 PLC ±.005
 1 PLC ±.005
 2 PLC ±.005
 3 PLC ±.005
 4 PLC ±.005
 ANGLES ±.005
 FINISH SEE CALLOUTS
 MATERIAL SEE CALLOUTS
 DWN: C.C.THOMAS 12-9-03
 DOK: D.MILLER 12-9-03
 APVD: D.MILLER 12-9-03
 PRODUCT SPEC: 2
 APPLICATION SPEC: 2
 SIZE: A
 CAGE CODE: 100779
 DRAWING NO: 1663842
 RESTRICTED TO: CUSTOMER DRAWING
 SCALE: 4:1
 SHEET: 1 OF 1
 REV: A

单击下面可查看定价，库存，交付和生命周期等信息

[>>TE Connectivity\(泰科\)](#)