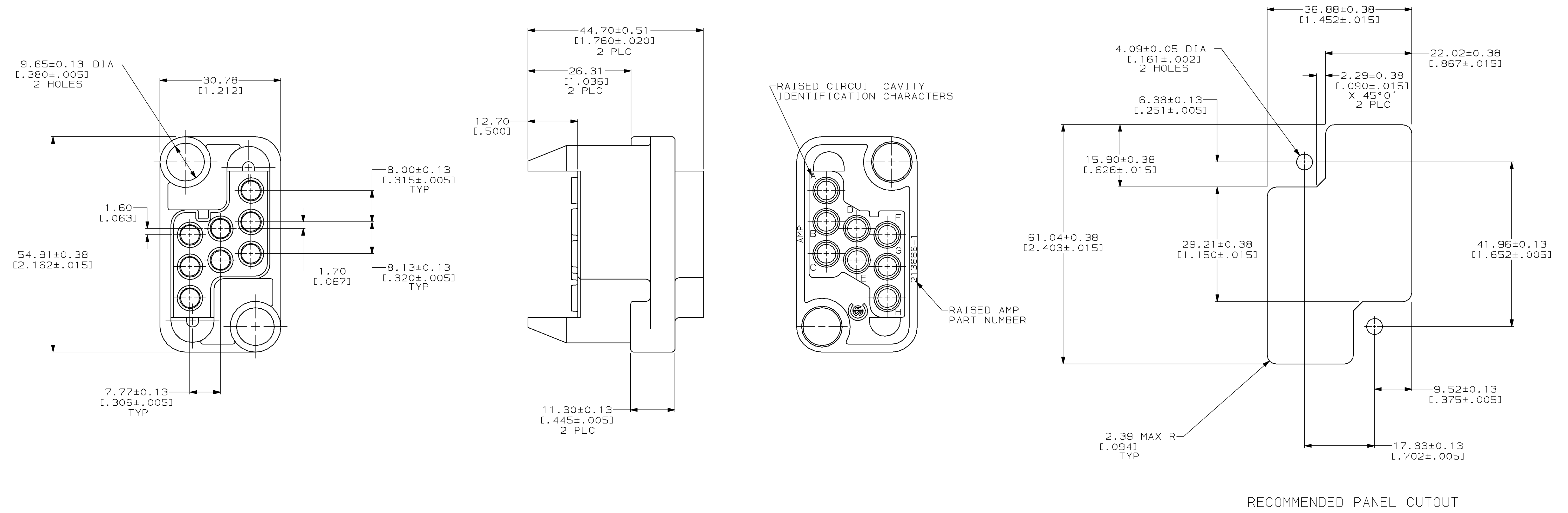


LOC		DIST		REVISIONS			
BD	37	P	LTR	DESCRIPTION	DATE	DWN	APVD
		0		RLSE -1 PER NPR 5364 WAS 95-5018-11-1	06/23/95	-	-
		A		REV PER EC 0020-136-96	04 MAR 96	BC	MM
		B		REV PER EC 0020-417-96	14 MAY 96	MB	MM



1. THIS PLUG HOUSING MATES WITH RECEPTACLE HOUSING PART NUMBER 213500-3.
 2. FOR MOUNTING SCREW INFORMATION SEE DRAWING 208211.
 3. THIS HOUSING ACCEPTS (8) 3.18 [0.125] DIA POWERBAND SOCKET CONTACTS.
- ▲ POLYESTER, BLUE.

213886-1
PART NUMBER

<small>THIS DRAWING IS A CONTROLLED DOCUMENT FOR AMP INCORPORATED. IT IS SUBJECT TO CHANGE AND THE CONTROLLING ENGINEERING DEPARTMENT SHALL BE CONTACTED FOR THE LATEST REVISION.</small>		DWN M. BINNER 06/23/95 CHK R. STONE 6-28-95 APVD M. McALONIS 6-28-95 NAME M. McALONIS PRODUCT SPEC APPLICATION SPEC WEIGHT - CUSTOMER DRAWING	AMP Incorporated Harrisburg, PA 17105-3608 HOUSING, PLUG, DRAWER CONNECTOR, 8 POSITION, METRIMATE SIZE A1 CAGE CODE 00779 DRAWING NO 213886 SCALE 2:1 SHEET 1 OF 1 REV B
---	--	--	--

单击下面可查看定价，库存，交付和生命周期等信息

[>>TE Connectivity\(泰科\)](#)