

2009

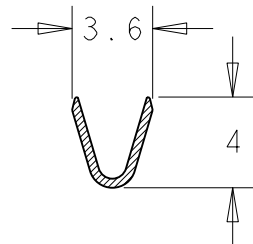
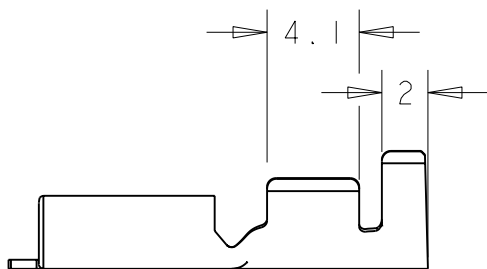
RELEASED FOR PUBLICATION
LIBRE DE SER PUBLICADO

BY TYCO ELECTRONICS CORPORATION ALL INTERNATIONAL RIGHTS RESERVED.
TODOS LOS DERECHOS RESEVADOS. LOS PRODUCTOS AMP ESTAN CUBIERTOS POR PATENTES ACTUALES O PENDIENTES

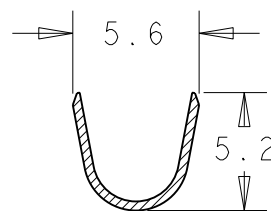
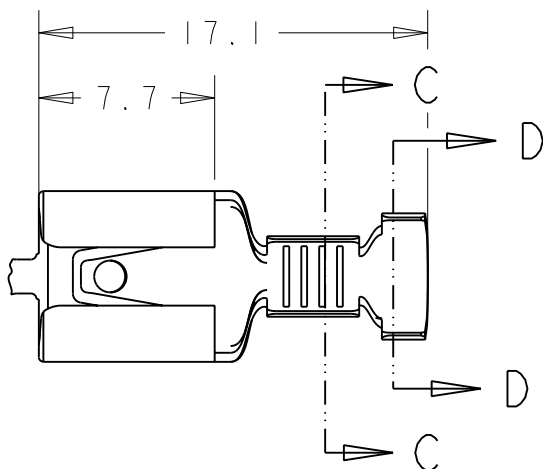
THIS DRAWING IS UNPUBLISHED.
PLANO NO PUBLICADO

© COPYRIGHT 2009

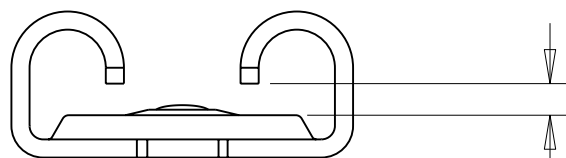
LOC	DIST	REVISIONS REVISIONES					
		P	LTR	DESCRIPTION DESCRIPCION	DATE FECHA	DWN DIB	APVD APR
AL	2		B	ES00-0007-02	24JAN02	A.H.	J.L.
			C	ES00-0133-03	08JAN04	J.L.	J.L.
			D	ET00-0026-05	29MAR05	A.V	G.T
			DI	REVISED PER ECO-09-025699	19DEC09	KK	AEG



SECTION C-C



SECTION D-D SCALE 6:1



PARA LENGÜETA CON AGUJERO DE 0,8 mm
DE ESPESOR
FOR TAB WITH HOLE OF 0.8 mm THICKNESS

NOTES: -

1 OBSOLETE PARTS: OBSOLETE CIS
STREAMLINING PER
D.RENAUD/D.SINISI

1 GAMA DE HILO: 1,0 - 2,5 mm² ; GAMA DE AISLANTE: 3,0 - 4,3 mm
1 WIRE RANGE: 1.0 - 2.5 mm² ; ISULATION RANGE: 3.0 - 4.3 mm

-5	ACERO STEEL	PRENIQUELADO PRENI	
-4	BRONCE BRONZE	-	OBSOLETE 1
-3	LATON BRASS	PREESTANADO PRE TIN	
-2	LATON BRASS	ESTANADO TIN PLATED	OBSOLETE
-1	LATON BRASS	-	
GUION DASH	MATERIAL	ACABADO FINISH	

DIMENSIONS: MEDIDAS, mm	DWN/DIB A. ALONSO	18FEB97	MATERIAL	TABLE	FINISH ACABADO	TABLE
	CHK/COMP J. LAZARO	30.9.97	Tyco Electronics Tyco Electronics AMP España, S.A. Barcelona. Spain.			
TOLERANCES UNLESS OTHERWISE SPECIFIED: TOLERANCIAS POR OMISION	APVD/APR -	11OCT00				
0 PLC/LUG ±0.4 1 PLC/LUG ±0.3 2 PLC/LUG ±0.13 3 PLC/LUG ±0.013 4 PLC/LUG ±0.0001 ANGLES/ANGULOS ±	PRODUCT SPEC ESPEC PRODUCTO	108-22021 -110-4 108-22080 -5	NAME TITULO	RECEPTACULO FASTON 6,35 FASTON RECEPTACLE 6.35		
	APPLICATION SPEC ESPEC APLICACION	114-2036	SIZE TAM	CAGE CODE CODIGO	DRAWING NO PLANO NO	RESTRICTED TO RESTRINGIDO A
	WEIGHT PESO	-	A4	00779	C=336236	-
CUSTOMER DRAWING /PLANO DE CLIENTE			SCALE ESCALA	3:1	SHEET HOJA	OF DE
				1	REV	DI

单击下面可查看定价，库存，交付和生命周期等信息

[>>TE Connectivity\(泰科\)](#)