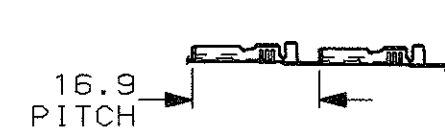


1) STATO DI FORNITURA - SCALA 1:1
(SUPPLY CONDITION - SCALE 1:1)



SENDO DI USCITA
DEL TERMINALE
DALLA BOBINA
(DIRECTION OFF
TOP OF REEL)

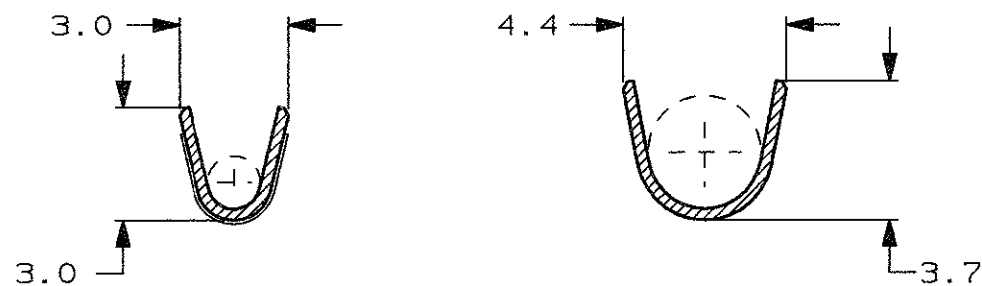
2) SPECIFICA DI PRODOTTO 108-20019
(PRODUCT SPEC. 108-20019)

3) PER LE VERSIONI IN PEZZI SCIOLTI
VEDERE DISEGNO 180439
(FOR LOOSE PIECE VERSION SEE DRAWING 180439).

4 BOBINATO CON CARTA INTERPOSTA TRA LE SPIRE
(REELED WITH INTERLAYER PAPER STRIP)

SEZIONE A-A
(SECTION A-A)

SEZIONE B-B
(SECTION B-B)



| | | | | | |
|----------|------|-------------------------------------|----------------------|--------------|------|
| OBSOLETE | 4 | NUDO (UNPLATED) | OTTONE (BRASS) | 1-180423-1 | AE |
| | | STAGNATO (PRE-TIN PLATED) | OTTONE (BRASS) | 180423-2 | AG |
| OBSOLETE | | NUDO (UNPLATED) | OTTONE (BRASS) | 180423-1 | AE |
| | NOTE | FINITURA / COLORE (FINISH / COLOUR) | MATERIALE (MATERIAL) | NUMERO (P/N) | REV. |

CUSTOMER DWG. FOR REFERENCE ONLY
DISEGNO PER CLIENTE SOLO PER RIFERIMENTO

THIS DRAWING IS UNPUBLISHED | RELEASE FOR PUBLICATION | 19

| | | | |
|---|----------------------------------|---|---------------|
| TOLLERANZE, SE NON DIVERSAMENTE SPECIFICATO (TOLERANCES, UNLESS OTHERWISE SPECIFIED) | DIAM. ISOLANTE (INS. DIA. RANGE) | RANGO FILO (WIRE RANGE) mm ² | SCALA (SCALE) |
| ± 0.4 | 1.5-2.8 | 0.5-1.5 | 5:1 |

ANGOLI (ANGLES) ± 2°

DIS. H. YAALI (DR.) 18 DEC 2000
DESCRIZIONE (DESCRIPTION) FASTON® Connector
CONT. C. TARTARI (CHK) - .110" sr. REC. CONTACT

| | | | | |
|------|------|-----------------|------|----------------|
| LOC. | SIZE | NUMERO (DWG NO) | REV. | FOGLIO (SHEET) |
| I | A3 | C-180423 | AG1 | 1 DI (OF) 1 |

| | | | | | |
|-----|---------------------------|-----------|-----|------|--------------|
| AG1 | REVISED PER ECR-15-016346 | 07MAY2016 | NK | LP | APP. (CAPP.) |
| REV | DESCRIPTION | DATE | DWN | APVD | |

单击下面可查看定价，库存，交付和生命周期等信息

[>>TE Connectivity\(泰科\)](#)