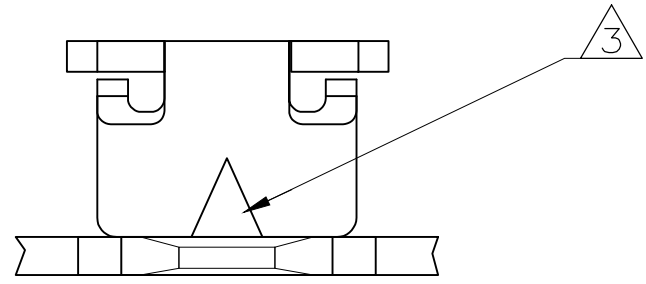


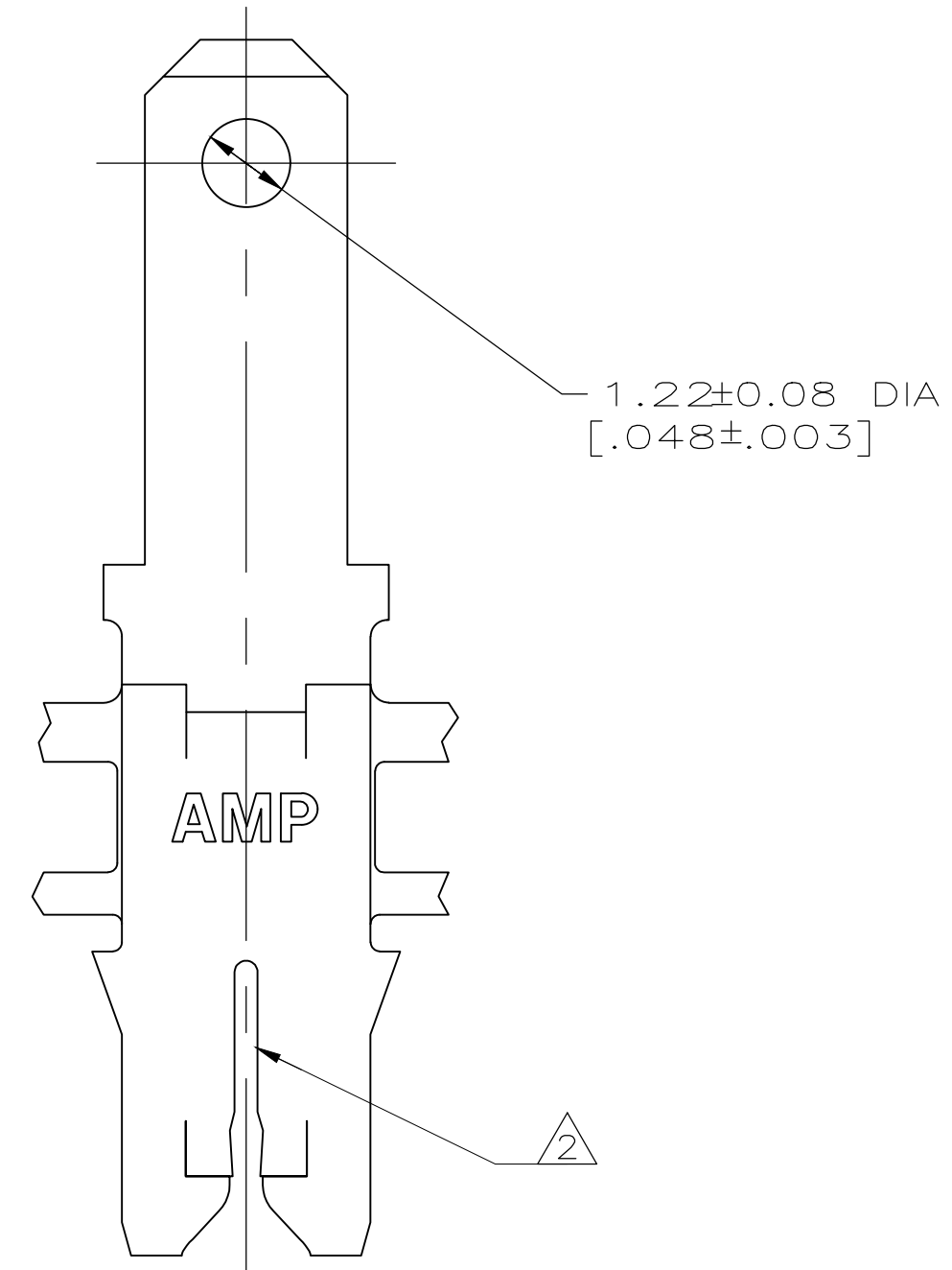
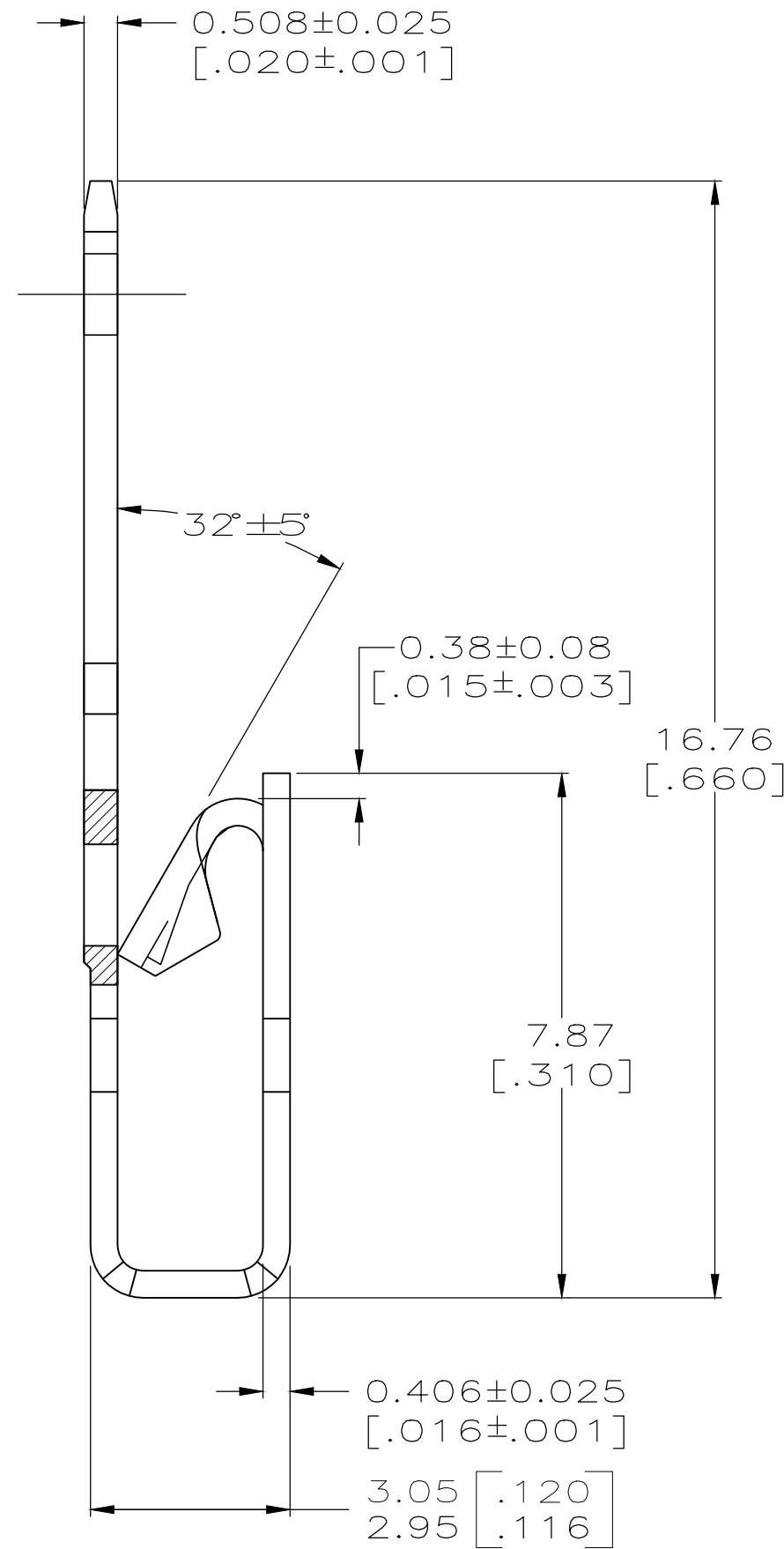
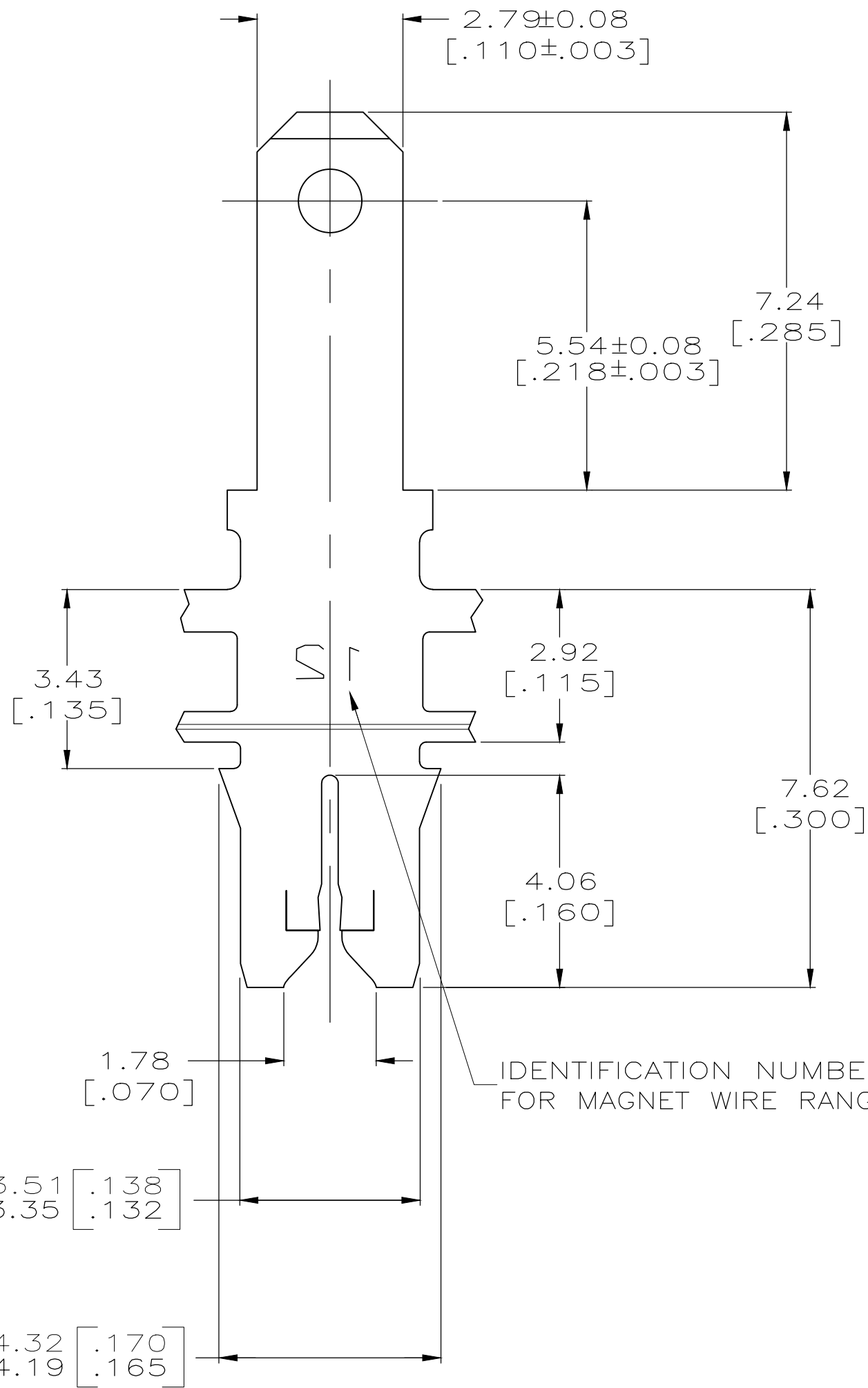
THIS DRAWING IS UNPUBLISHED. RELEASED FOR PUBLICATION  
 © COPYRIGHT - By - ALL RIGHTS RESERVED.

LOC		DIST		REVISIONS			
P	LTR	DESCRIPTION		DATE	DWN	APVD	
AF	50	F2	REVISED PER ECR-19-013909	01OCT2019	PC	MB	



- 5 VARNISH RESIST OVER 0.002032 [.000080] MIN TIN PER MIL-T-10727.
- 6 0.002032 [.000080] MIN TIN PER MIL-T-10727.

- 1 CONTINUOUS STRIP ON REELS WITH TERMINALS LOCATED ON 5.59±0.08 [.220±.003] CENTERS.
- 2 SLOT ACCEPTS 0.45-0.64mm [#25-#22] AWG COPPER MAGNET WIRE. 2 WIRES OF THE SAME SIZE PER SLOT EXCEPT 0.64mm [#22] AWG WHICH IS ONE WIRE ONLY. ALUMINIUM RANGE 0.57-0.72mm[#23-#21] AWG, ALUMINIUM WIRE RANGE APPLIES FOR POST TIN PLATED PART NUMBERS ONLY.
- 3 POKE-IN ACCEPTS A 0.5-0.8mm<sup>2</sup> [#20-#18] AWG SOLID OR FUSED STRANDED LEAD WIRE.
- 4 AFTER INSERTION INTO PLASTIC HOLDER TAB PORTION MUST BE BENT OVER 45° TO 90° OR POTTED-IN TO PREVENT PULL-OUT WHEN MATING RECEPTACLE IS DISCONNECTED.



THIS DRAWING IS A CONTROLLED DOCUMENT.		DWN 17/DEC/94 MICHAEL S. FEHER	<b>STE</b> TE Connectivity
DIMENSIONS: INCHES		CHK 19/DEC/94 JEFF R. RUTH	
TOLERANCES UNLESS OTHERWISE SPECIFIED:		APVD 20/DEC/94 NELSON E NEFF	NAME
0 PLC ± -		PRODUCT SPEC	108-2012
1 PLC ± -		APPLICATION SPEC	114-2046
2 PLC ± 0.25 [.010]		WEIGHT	-
3 PLC ± -		MATERIAL	BRASS
4 PLC ± -		FINISH	SEE TABLE
ANGLES ± -		CUSTOMER DRAWING	SCALE 10:1 SHEET 1 OF 1 REV F2

单击下面可查看定价，库存，交付和生命周期等信息

[>>TE Connectivity\(泰科\)](#)