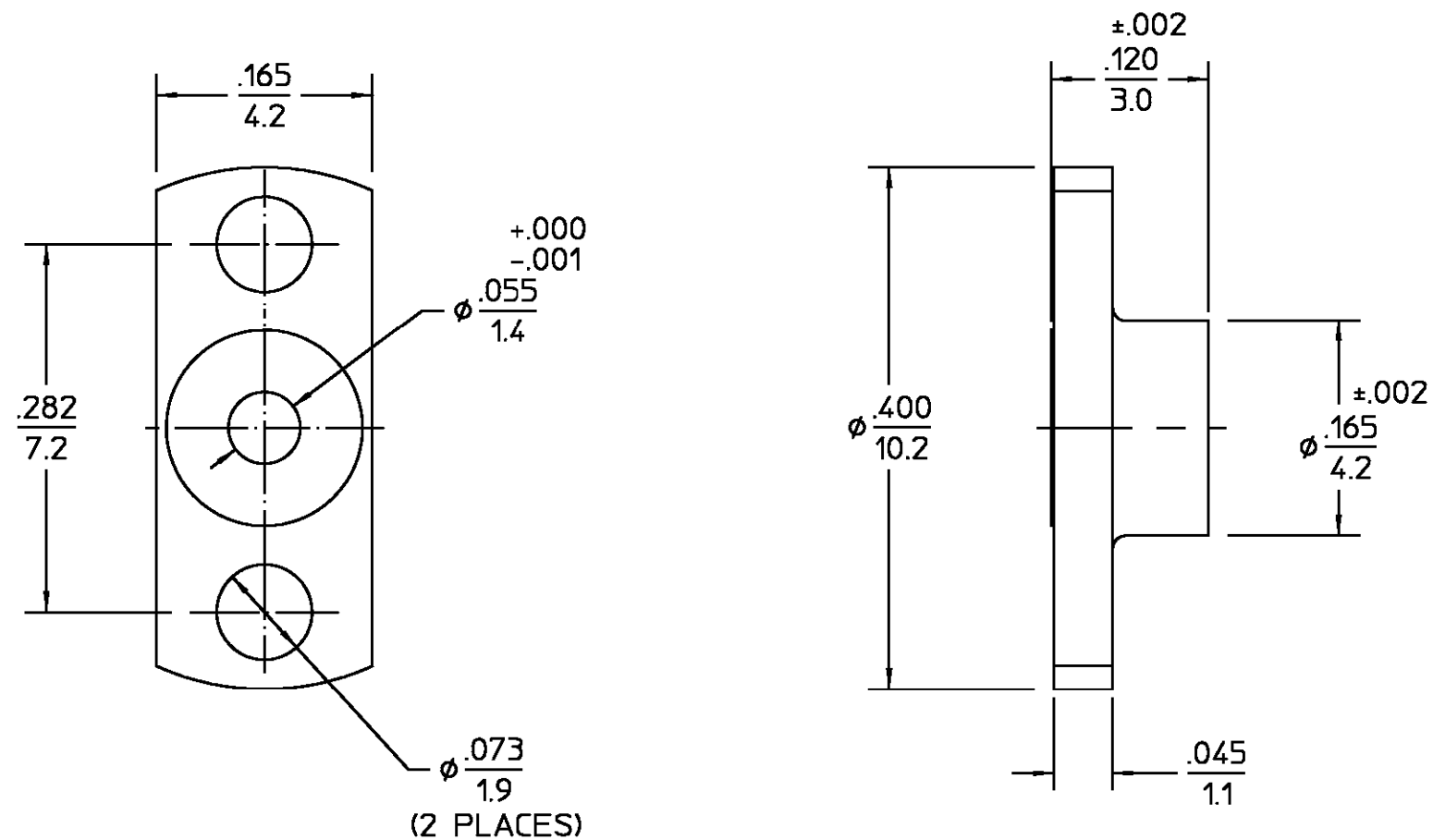


REVISIONS			
REV	DESCRIPTION	DATE	APPROVED
04 <sub>1</sub>	REVISED	K.LE 4-10-97	<i>Com</i> 4/10/97



SHROUD	STAINLESS STEEL PER ASTM-A484 AND ASTM- A582, TYPE 303	PASSIVATE PER QQ-P-35
COMPONENT	MATERIAL	FINISH
UNLESS OTHERWISE SPECIFIED DIMENSIONS ARE IN INCHES TOLERANCE ON FRAC. DEC. ANGLES ± 1/64 ±.005 ± °	DRAWN BY <i>E.F.H.</i> DATE 1/13/92	<b>AMP Incorporated</b> 140 Fourth Avenue Waltham, MA 02451-7599
	CHECKED BY MY 1-15-92	
APPD BY <i>RAC</i> 1/15/92	<b>AMP</b> TITLE OSMP FULL DETENT SHROUD	
These drawings and specifications are the property of M/A-COM Incorporated and shall not be reproduced or copied or used in whole or in part as the basis for the manufacture or sale of item(s) without written permission.	USE ASS'Y PROCEDURE	NO. AP. 408-04752 (29-006)
	SIZE B	CODE IDENT NO. 26805
SCALE 8:1	2998-5003-02	REV 04 <sub>1</sub>
SHEET 1 OF 1		

CUSTOMER DRAWING AMP PART # 1056724-1  
SHEET 1 OF 1 REV A

单击下面可查看定价，库存，交付和生命周期等信息

[>>TE Connectivity\(泰科\)](#)