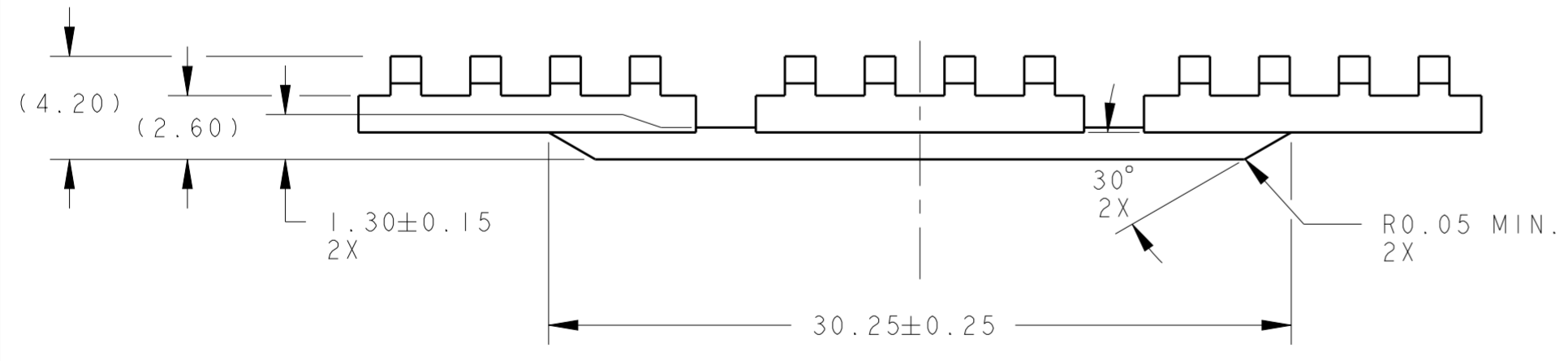
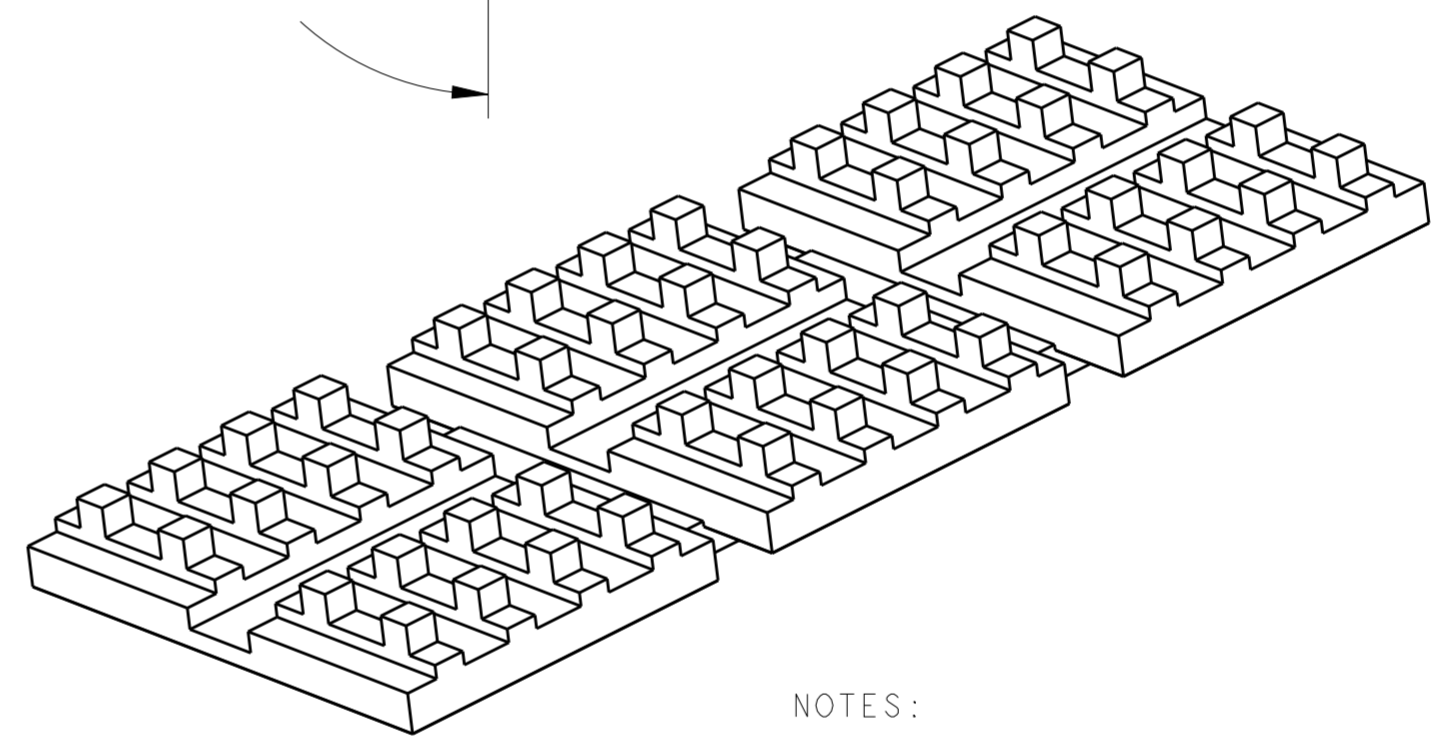
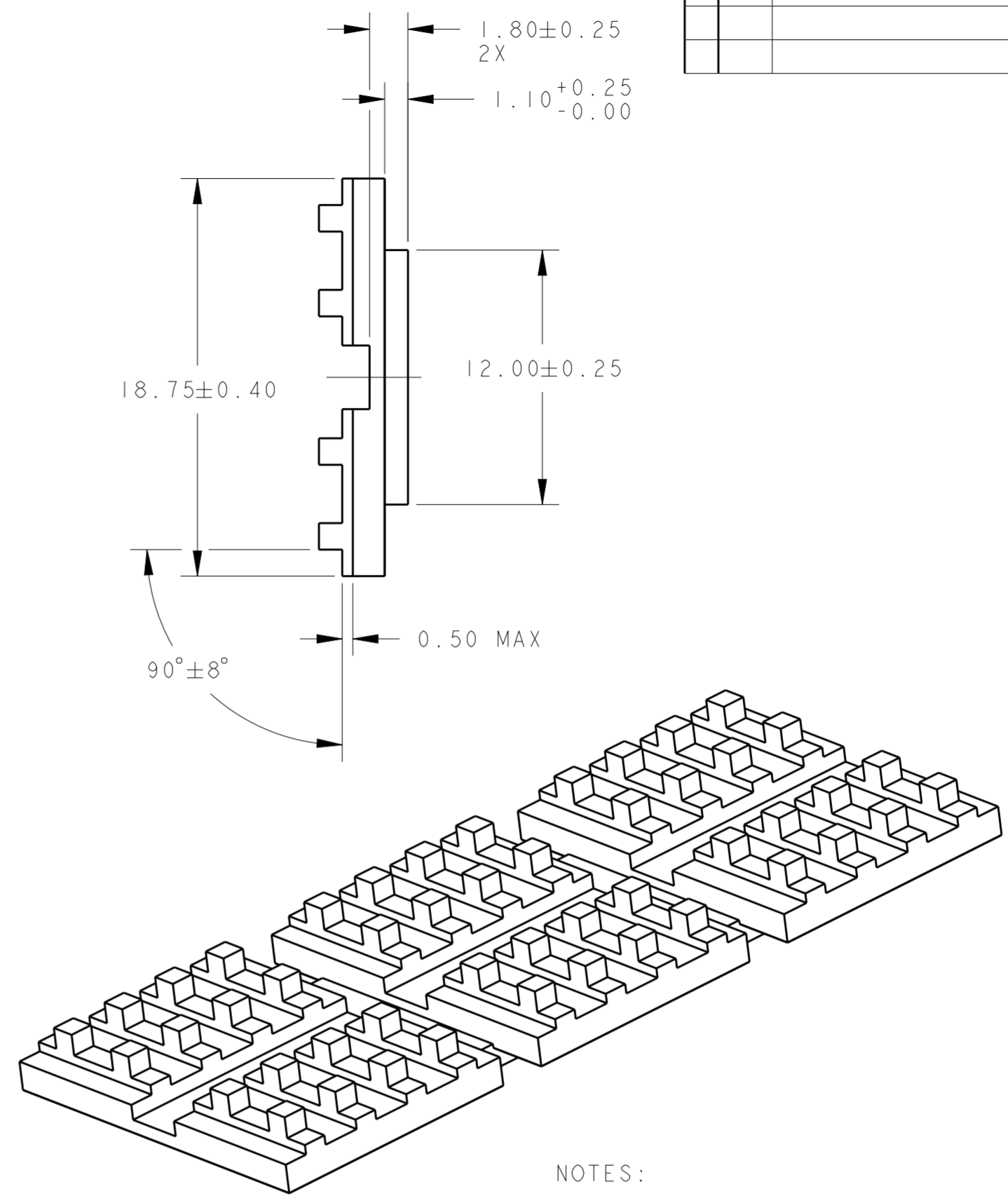
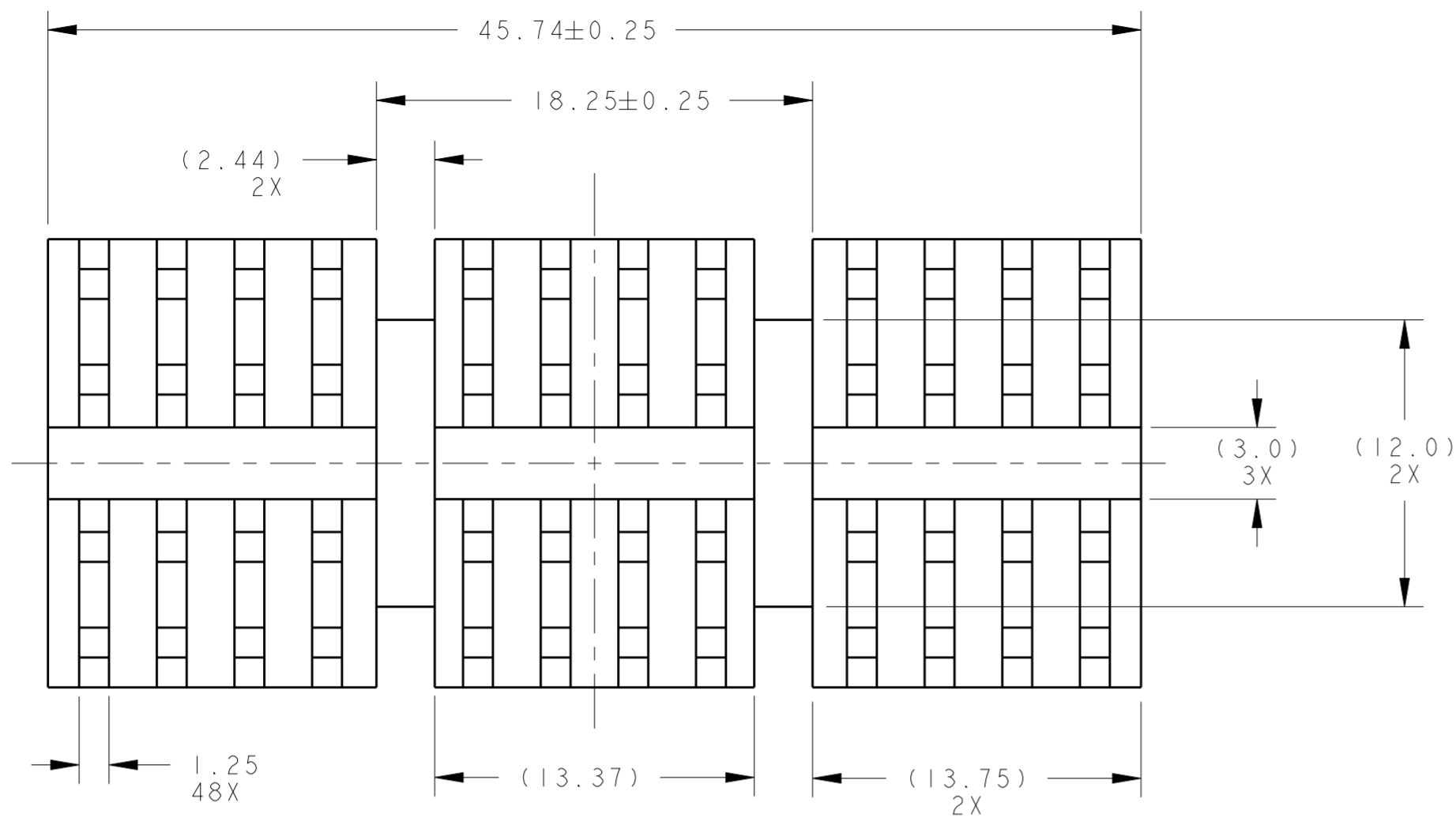


THIS DRAWING IS UNPUBLISHED. RELEASED FOR PUBLICATION 20
 © COPYRIGHT 20 BY - ALL RIGHTS RESERVED.

LOC	DIST	REVISIONS					
AD	00	P	LTR	DESCRIPTION	DATE	DWN	APVD
		B		REVISED PER ECO-13-007047	14MAY2013	BL	AC
		BI		REVISED PER ECO-15-004981	31MAR2015	RG	MC



NOTES:

- UNLESS OTHERWISE SPECIFIED
- 1. INTERPRET DRAWING PER ASME Y14.5M - 1994.
- 2. 0,2mm MAX BURR.
- 3. VARIATION IN PLATING COLOR IS NORMAL AND ALLOWED.
- 4. RoHS COMPLIANT AND CERTIFIED.

FINISH	MATERIAL	PART NUMBER
BLACK ANODIZED	ALUMINUM	1963841-5
NICKEL PLATED	ALUMINUM	1963841-3

THIS DRAWING IS A CONTROLLED DOCUMENT.		DWN E. TAO 6-17-08	TE Connectivity	
		CHK B. PETROCELLI 6-23-08		
DIMENSIONS: mm	TOLERANCES UNLESS OTHERWISE SPECIFIED:	APVD -	NAME QSFP SINGLE PCI EXTRUSION HEATSINK 4.2mm TALL	
0 PLC ±	1 PLC ±0.2	PRODUCT SPEC -	SIZE A20779	
2 PLC ±0.10	3 PLC ±0.08	APPLICATION SPEC -	CAGE CODE C-1963841	
4 PLC ±0.0001	ANGLES ±5°	WEIGHT -	DRAWING NO -	
FINISH	SEE TABLE	CUSTOMER DRAWING	SCALE 4.000	SHEET 1 OF 1

单击下面可查看定价，库存，交付和生命周期等信息

[>>TE Connectivity\(泰科\)](#)