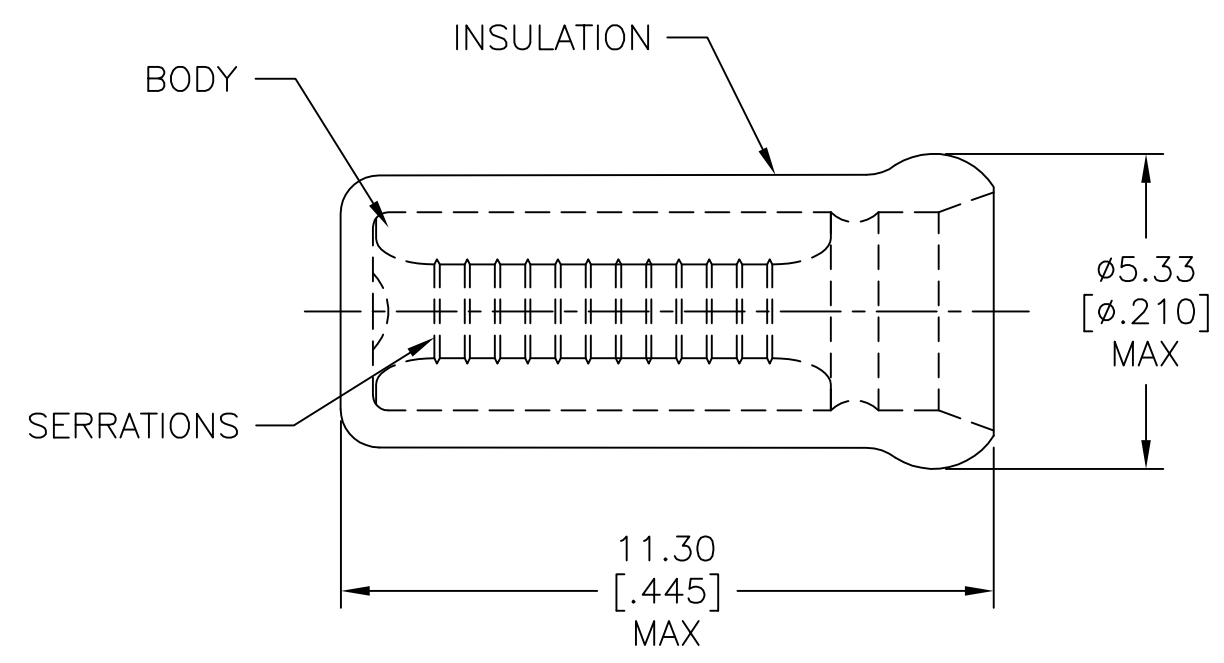


THIS DRAWING IS UNPUBLISHED. RELEASED FOR PUBLICATION  
 © COPYRIGHT - By - ALL RIGHTS RESERVED.

REVISIONS					
P	LTR	DESCRIPTION	DATE	DWN	APVD
	F1	REVISED PER ECO-11-004820	11MAR11	RK	HMR
	F2	REVISED PER ECO-17-006294	12OCT2017	RS	DR



- 1 USE FOR STRIPPED (SINGLE) WIRE END ONLY.
- 2 WIRE INSUL,  $\phi 3.15[\phi.124]$  MAX.

MS25274/2 CLASS 1 & 2	1000	LOOSE PIECE	328307
MILITARY P/N & CLASS	QTY	PACKAGE TYPE	PART NO

AMP INCORPORATED CUSTOMER SERVICE SYSTEM		MAX RECOMMENDED OPERATING TEMPERATURE: 105°C[221°F]	THIS DRAWING IS A CONTROLLED DOCUMENT.		DWN L OLMEDA 21MAR96	TE Connectivity SPARE WIRE CAP, WIRE SIZE, 22-18 AWG			
FOR ADDITIONAL PRODUCT INFORMATION OR COPIES OF DRAWINGS AND TECHNICAL DOCUMENTS	PRODUCT INFORMATION CENTER 1-800-522-6752		VOLTAGE RATING: -	DIMENSIONS: mm [INCHES]	TOLERANCES UNLESS OTHERWISE SPECIFIED:				
FOR APPLICATION TOOLING INFORMATION	TOOLING ASSISTANCE CENTER 1-800-722-1111	CIRCULAR MIL AREA: 0.26mm <sup>2</sup> -1.65mm <sup>2</sup> [509-3,248]		0 PLC ± -	APVD K FERREK 21MAR96	NAME			
FOR ORDER ENTRY	1-800-526-5142			1 PLC ± -	MATERIAL	2 PLC ± 0.20 [.008]	PRODUCT SPEC	SIZE	CAGE CODE
			BODY, CU PER ASTM B152 INSUL, NYLON, COLOR, RED	3 PLC ± -	APPLICATION SPEC	A300779		C=328307	
				4 PLC ± -	FINISH	CUSTOMER DRAWING		SCALE 8:1	SHEET 1 OF 1
				ANGLES ± -	BODY, TIN PLATE PER ASTM B545			REV F2	

单击下面可查看定价，库存，交付和生命周期等信息

[>>TE Connectivity\(泰科\)](#)