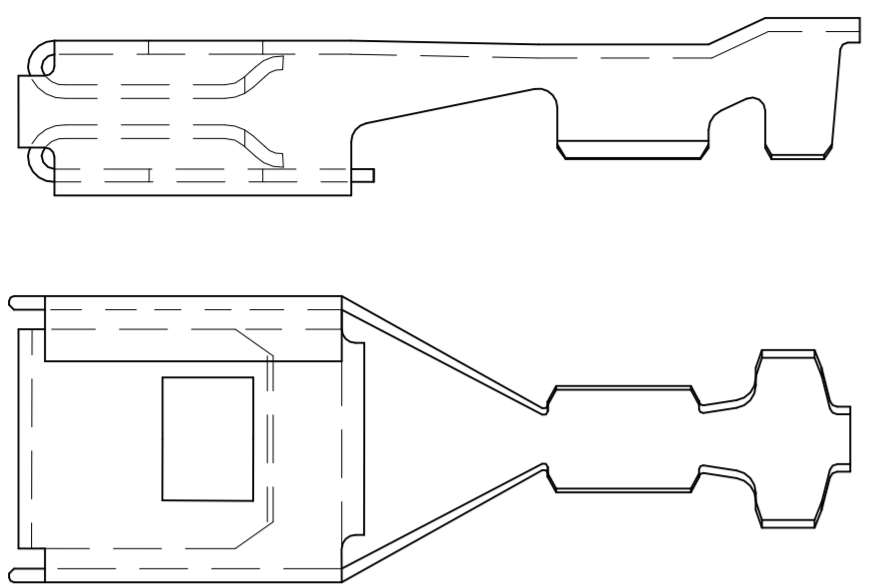


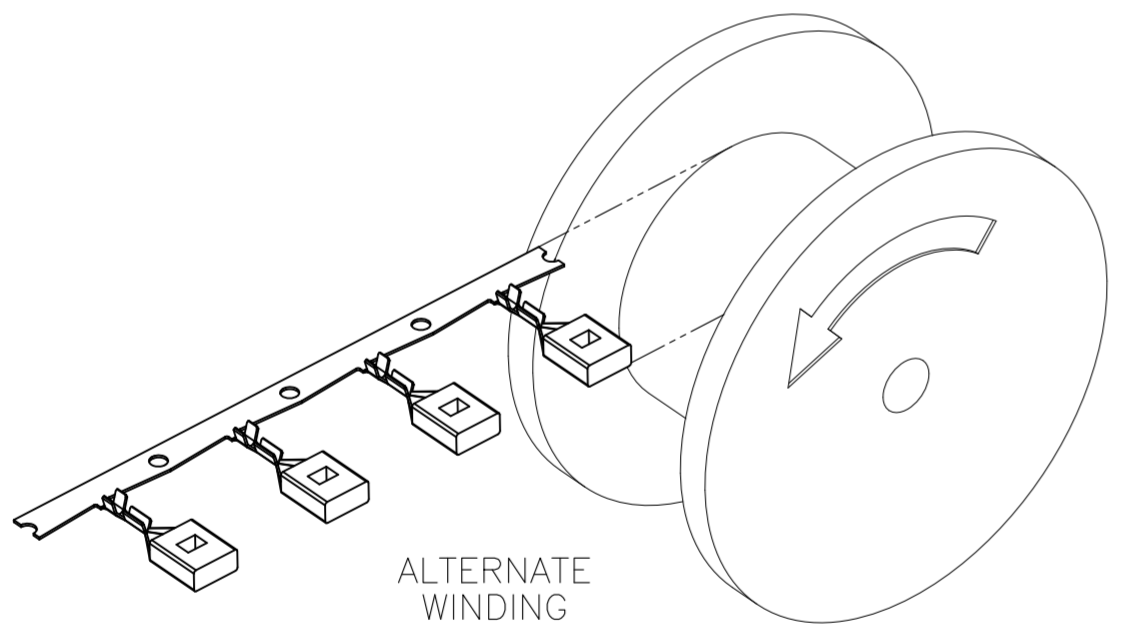
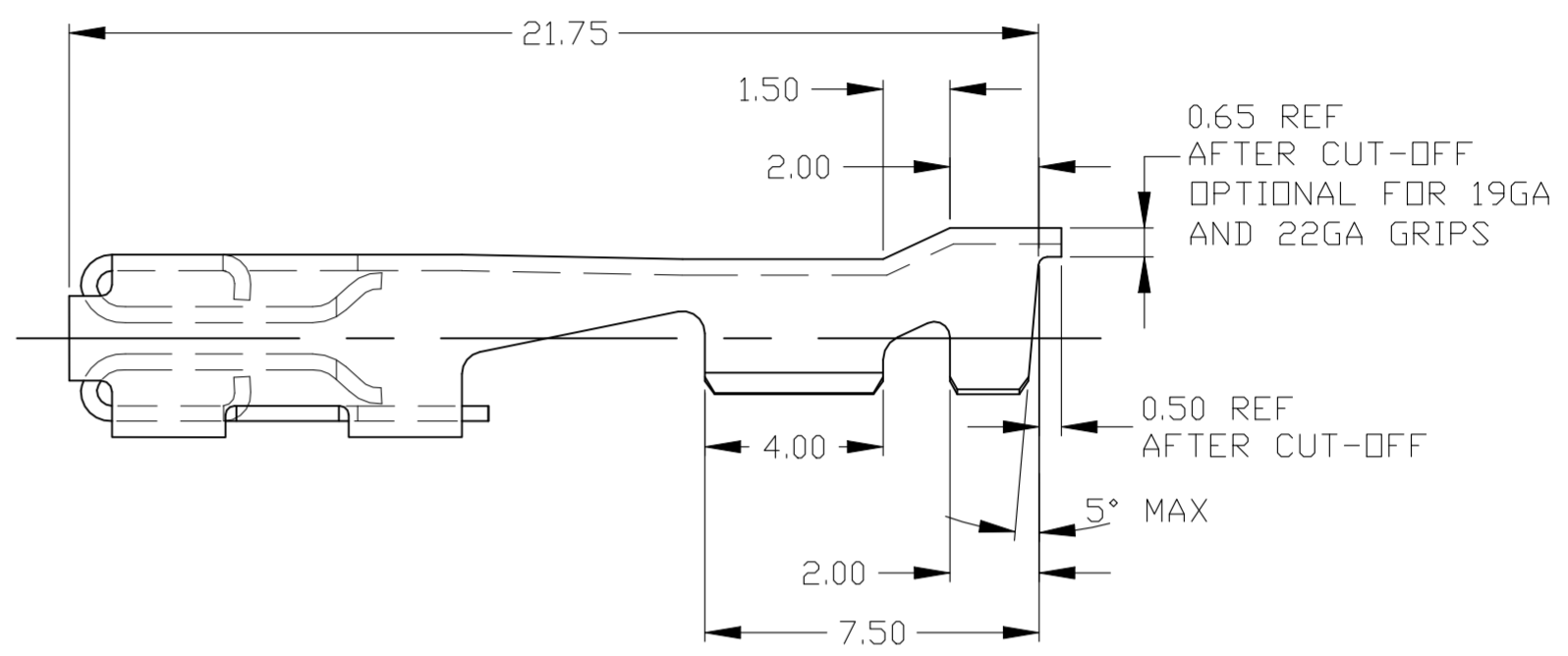
THIS DRAWING IS UNPUBLISHED. RELEASED FOR PUBLICATION - .2018.
 © COPYRIGHT 2018 TE Connectivity ALL RIGHTS RESERVED.

| REVISIONS | | | | | |
|-----------|-----|---------------------------|-----------|-----|------|
| P | LTR | DESCRIPTION | DATE | DWN | APVD |
| D | | REVISED PER ECO-18-012722 | 14AUG2018 | JMS | WW |
| D1 | | REVISED PER ECO-20-012418 | 10SEP2020 | AP | WW |

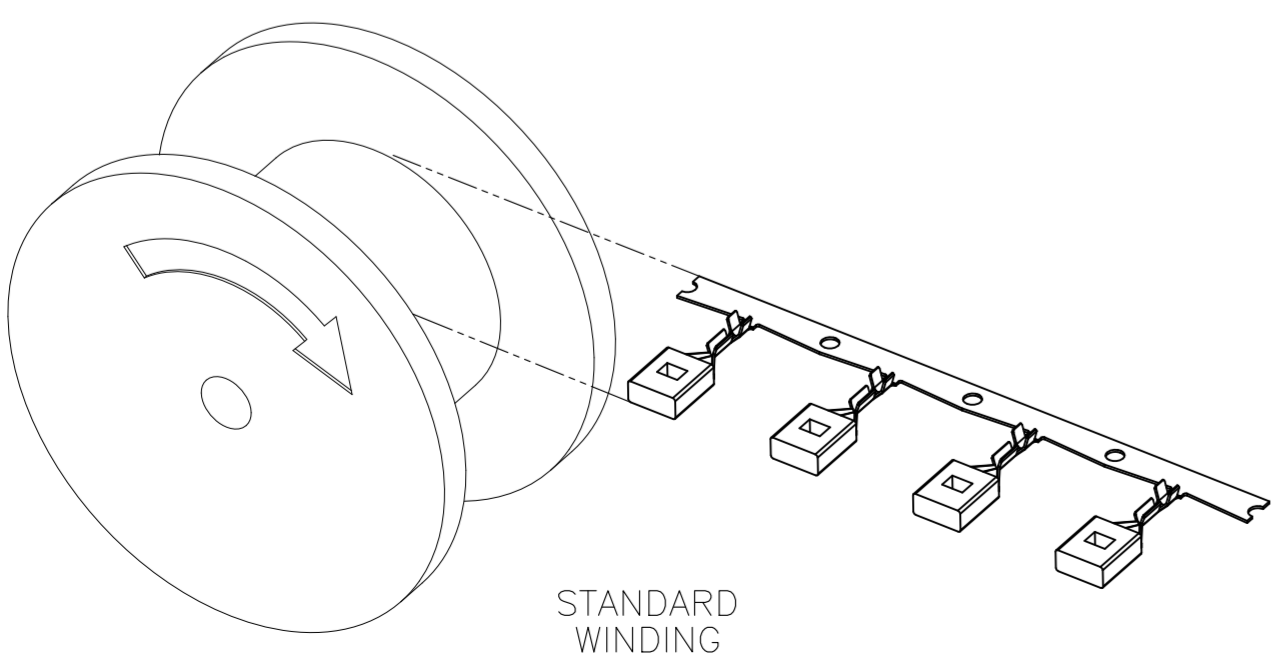
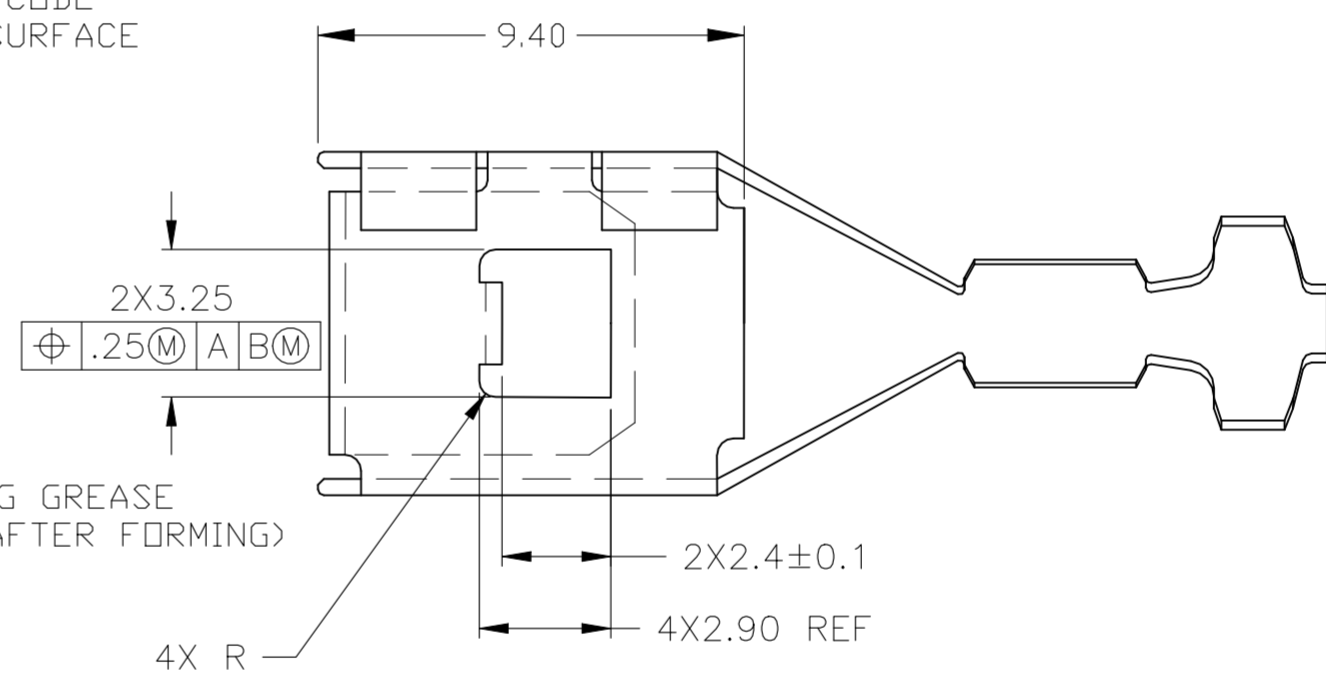
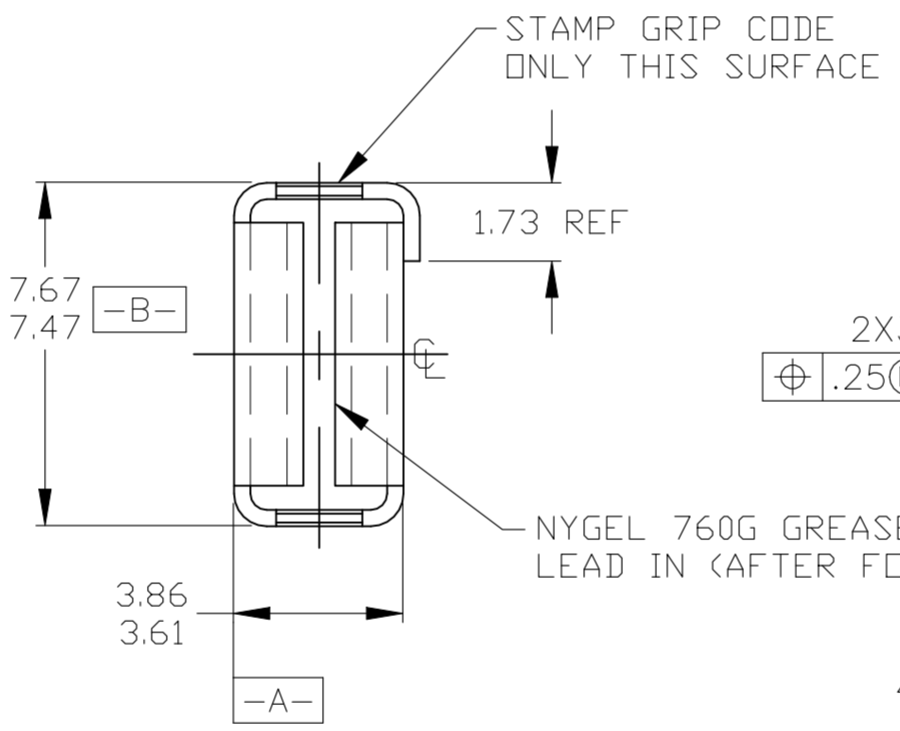
UNLESS OTHERWISE SPECIFIED:
 1. CA19400 BRASS, TENSILE STRENGTH: 379-455 MPg (55-66 KSI) (HARDNESS REF R30T 55-62)



OPTIONAL CONSTRUCTION SHOWN



ALTERNATE WINDING



STANDARD WINDING

| | | | | | |
|-------------------|------------------|----------------|-------------|----|--|
| OBSOLETE | - | 1438231-7 | - | 22 | INSERTION-EXTRACTION REQUIREMENTS USING A POLISHED STEEL BLADE 6.22 [.245] X 0.81 [.032] FIRST INSERTION FORCE MAX 10.0N [2.2LBS] OR ANY INDIVIDUAL READING TO A DEPTH OF INSERTION OF 5.25/5.5 (UNGREASED AND GEASED) FOR S.P.C. WITH CPK OF 16.7 MIN MAX FIRST INSERTION 11.0N [2.42LBS] BOTH GREASED AND UNGREASED FOURTH EXTRACTION FORCE MIN 6.8N [15.8LBS] UNGREASED FOURTH EXTRACTION FORCE MIN 4.0N [0.89LBS] (GREASED) NOTE: REF ABOVE FOR INSERTION DEPTH |
| | - | 1438231-6 | - | 19 | |
| | - | 1438231-5 | 3-1438231-3 | 18 | |
| | 1438231-8 | 1438231-4 | 3-1438231-2 | 14 | |
| | - | 1438231-3 | - | 13 | |
| - | 1438231-2 | - | 11 | | |
| 1438231-9 | 1438231-1 | 3-1438231-1 | 10 | | |
| TE P/N REWOUND | TE P/N UNGREASED | TE P/N GREASED | WIRE SIZE | | |
| ALTERNATE WINDING | STANDARD WINDING | | | | |

THIS DRAWING IS A CONTROLLED DOCUMENT.

| | | | |
|----------------|--|--------------------------|-------------------------------|
| DIMENSIONS: mm | TOLERANCES UNLESS OTHERWISE SPECIFIED: | DWN JR BUSSARD 09MAY2003 | TE Connectivity Ltd. |
| | 0 PLC ± - | CHK DM REVAK 09MAY2003 | |
| | 1 PLC ± - | APVD DM REVAK 09MAY2003 | |
| | 2 PLC ± 0.25 | PRODUCT SPEC | |
| | 3 PLC ± - | APPLICATION SPEC | |
| 4 PLC ± - | ANGLES ± 2° | NAME | CHART 250 TERMINAL FEMALE |
| MATERIAL | FINISH | WEIGHT 0.000000 | SIZE A2 CAGE CODE 00779 |
| | | CUSTOMER DRAWING | DRAWING NO C=1438231 |
| | | | RESTRICTED TO |
| | | | SCALE 5:1 SHEET 1 of 1 REV D1 |

单击下面可查看定价，库存，交付和生命周期等信息

[>>TE Connectivity\(泰科\)](#)