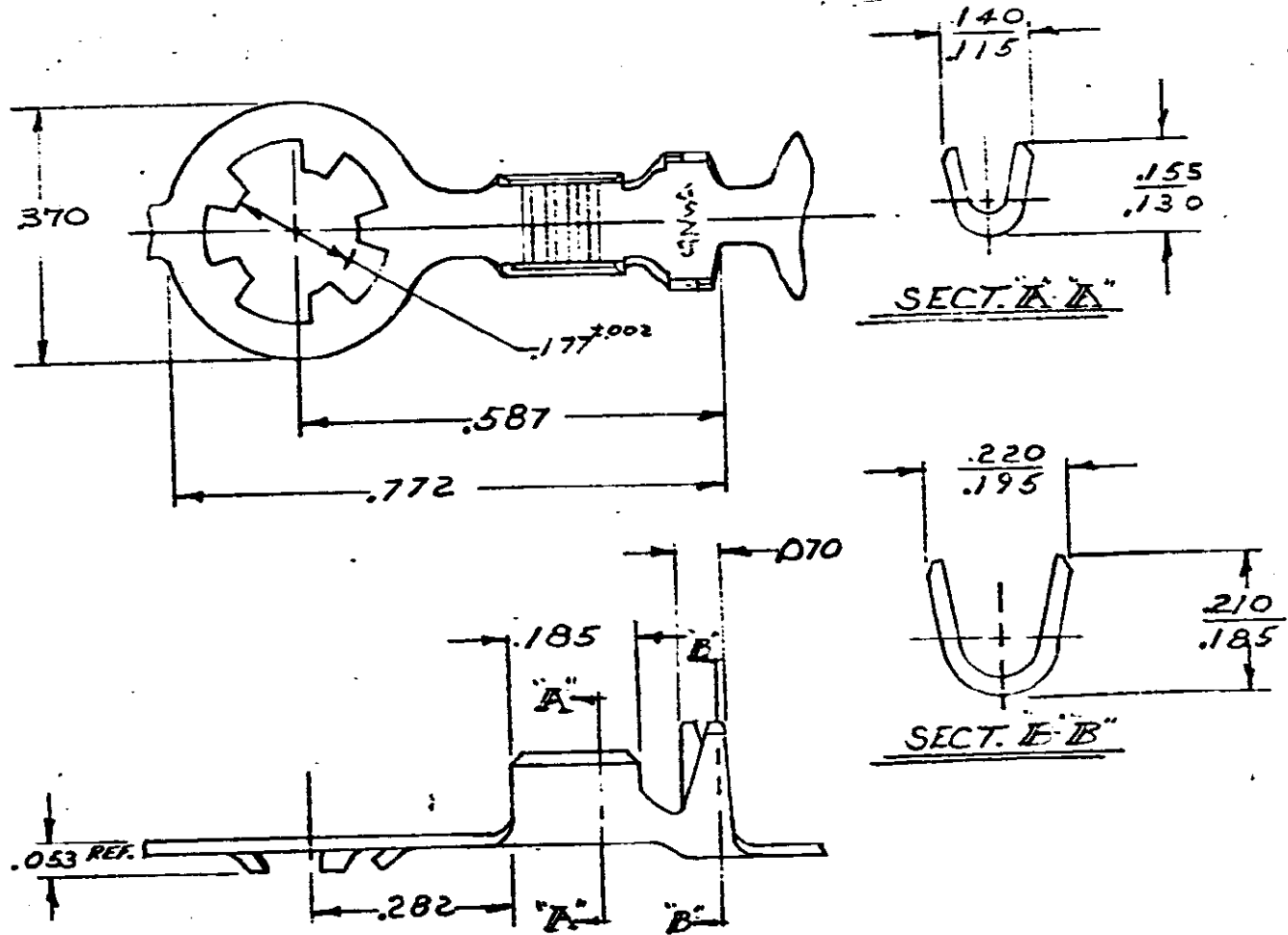


DRAWING MADE IN AMERICAN PROJECTION

NUMBER
350509



CONTINUOUS STRIP, ON REELS

PART NO.
350509-1

DIMENSIONS IN INCHES. DO NOT SCALE PRINT.

UNPUBLISHED COPY NOT TO BE
REPRODUCED NOR PUBLISHED
WITHOUT WRITTEN PERMISSION
AMP INCORPORATED.

© 1973 BY AMP INCORPORATED. ALL RIGHTS RESERVED. AMP PRODUCTS COVERED BY PATENTS AND/OR PATENTS PENDING

CUSTOMER COPY
REFERENCE ONLY

MATERIAL AND FINISH
025 3F488



AMP INCORPORATED
HARRISBURG PENNA.

WIRE — RANGE — INSULATION TYPE
#22-16 | .105 MAX

TOLERANCE EXCEPT AS NOTED
± .015 ± 1° 0'

LOC A NO 350509 REV A

| LTR | REVISION RECORD | ECN | OP | CHK | DATE |
|-----|------------------|-----|----|-----|------|
| | A. M. & Revision | | | | |
| DR | 2-9-73 | | | | |
| CHK | 2-9-73 | | | | |

NAME RING

单击下面可查看定价，库存，交付和生命周期等信息

[>>TE Connectivity\(泰科\)](#)