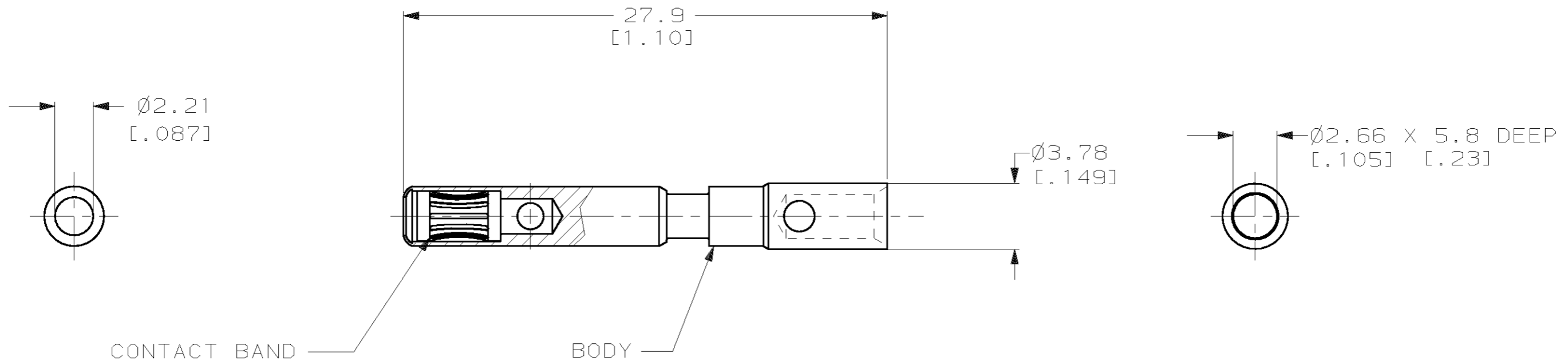


THIS DRAWING IS UNPUBLISHED. RELEASED FOR PUBLICATION, 19 .  
 © COPYRIGHT 19 BY AMP INCORPORATED. ALL INTERNATIONAL RIGHTS RESERVED.

LOC CH DIST 11 P F

REVISIONS				
ZONE	LTR	DESCRIPTION	DATE	APPD
	0	RELEASED FOR PRODUCTION	07/JAN/97	RNP
	A	EC OB20-1083-98	20/AUG/98	RNP
	B	EC OB20-0530-99	29/APR/99	RNP

- 1 MATERIAL- BODY, COPPER ALLOY  
BAND, BeCu
- 2 FINISH-BODY AND BAND, .0002 IN. SILVER  
OVER .00004 IN. NICKEL.
- 3. WIRE BARREL WILL ACCEPT 12-14 AWG WIRE.
- 4. MATES WITH AMP PART NUMBER 194212-1.
- 5. ALL DIMENSIONS ARE REFERENCE ONLY.



194213-1

FINISH PART NO

DO NOT SCALE PRINT. UNLESS SPECIFIED DIMENSIONS IN mm [INCHES] TOLERANCES ON: 2 PLC DEC ± 0.5 [.02] 3 PLC DEC ± 0.25 [.010] ANGLES ± -	DR 07/JAN/97 R N POLK
MATERIAL	CHK -
FINISH	APPD -
	APPD -
	PRODUCT SPEC -
	APPLICATION SPEC -
	WEIGHT -

<b>AMP</b> AMP Incorporated Harrisburg, PA 17105-3608		
NAME SOCKET ASSY, 2mm, 12-14 AWG LUBRICATED, MATE-N-LOK II		
SIZE B	CAGE CODE 00779	DRAWING NO C-194213
SCALE	SHEET 1 OF 1	

THIS DRAWING IS A CONTROLLED DOCUMENT FOR AMP INCORPORATED. IT IS SUBJECT TO CHANGE AND THE CONTROLLING ENGINEERING ORGANIZATION SHOULD BE CONTACTED FOR THE LATEST REVISION.

单击下面可查看定价，库存，交付和生命周期等信息

[>>TE Connectivity\(泰科\)](#)