

THIS DRAWING IS UNPUBLISHED.

RELEASED FOR PUBLICATION

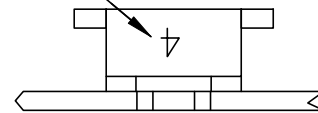
ALL RIGHTS RESERVED.

© COPYRIGHT - By -

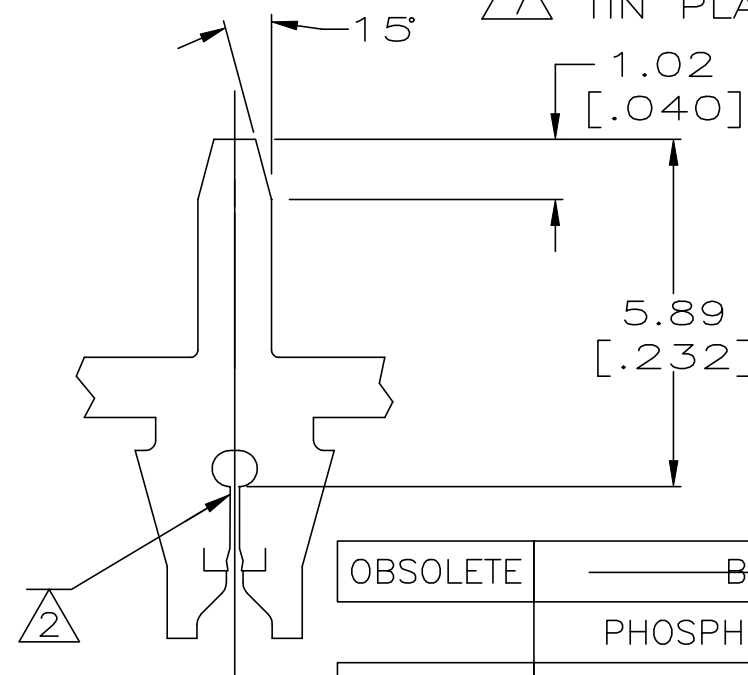
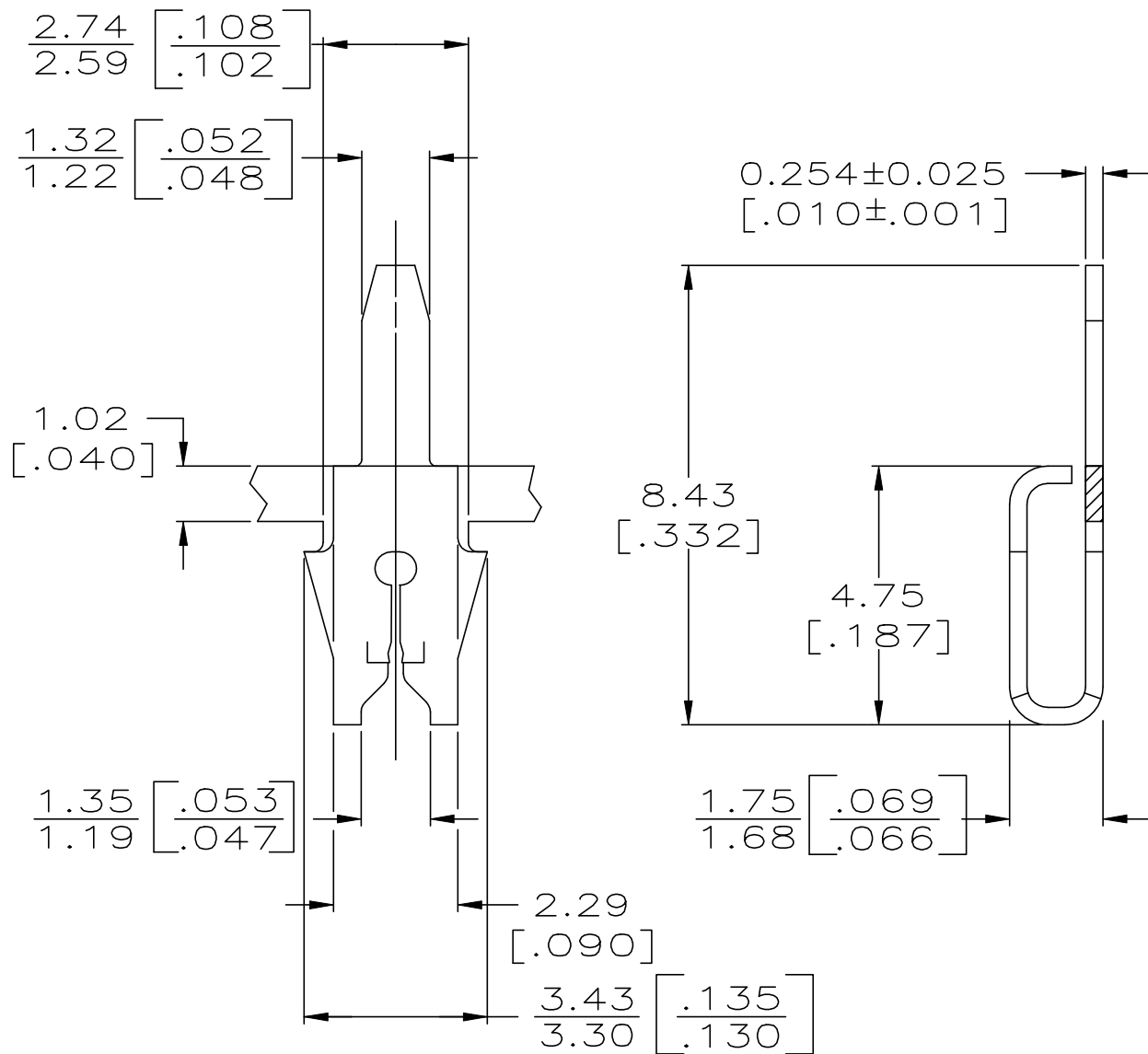
REVISIONS

P	LTR	DESCRIPTION	DATE	DWN	APVD
	H3	OBSOLETE 62938-4	22FEB2019	SV	PKS

IDENTIFICATION NUMBER 4 FOR MAGNET WIRE RANGE



- 1 CONTINUOUS STRIP ON REELS WITH TERMINALS LOCATED ON 5.08±0.08 [.200±.003] CENTERS.
- 2 SLOT ACCEPTS 0.18-0.23mm DIA [#33-#31]AWG COPPER MAGNET WIRE
- 3 TIN OVER NICKEL PLATE
- 4 REELED FOR APPLICATION THROUGH MAG-MATE INSERTION MACHINE.
- 5 REELED FOR INSERTION INTO PRINTED CIRCUIT BOARD.
- 6 PRELIMINARY - NOT FOR PRODUCTION.
- 7 TIN PLATE



OBSOLETE	BRASS	7	4	62938-4
	PHOSPHOR BRONZE	3	4	62938-3
OBSOLETE	BRASS	3	5	62938-2
	BRASS	3	4	62938-1
	MATERIAL		REELING	PART NUMBER

THIS DRAWING IS A CONTROLLED DOCUMENT.

DWN 24JAN2003 MICHAEL S. FEHER
 CHK 24JAN2003 KURT A. RANDOLPH
 APVD 24JAN2003 KURT A. RANDOLPH

TE Connectivity

NAME: TERMINAL,POSTED, 187 SERIES MAG-MATE™

PRODUCT SPEC: 108-2012
 APPLICATION SPEC: 114-2069

SIZE: A3 CAGE CODE: 00779 DRAWING NO: C-62938 RESTRICTED TO: -

WEIGHT: -

CUSTOMER DRAWING SCALE: 8:1 SHEET: 1 of 1 REV: H3

DIMENSIONS:	TOLERANCES UNLESS OTHERWISE SPECIFIED:
INCHES	
	± -
	± -
	± 0.25 [.010]
	± -
	± -
ANGLES	± -
MATERIAL	FINISH
SEE TABLE	-

单击下面可查看定价，库存，交付和生命周期等信息

[>>TE Connectivity\(泰科\)](#)