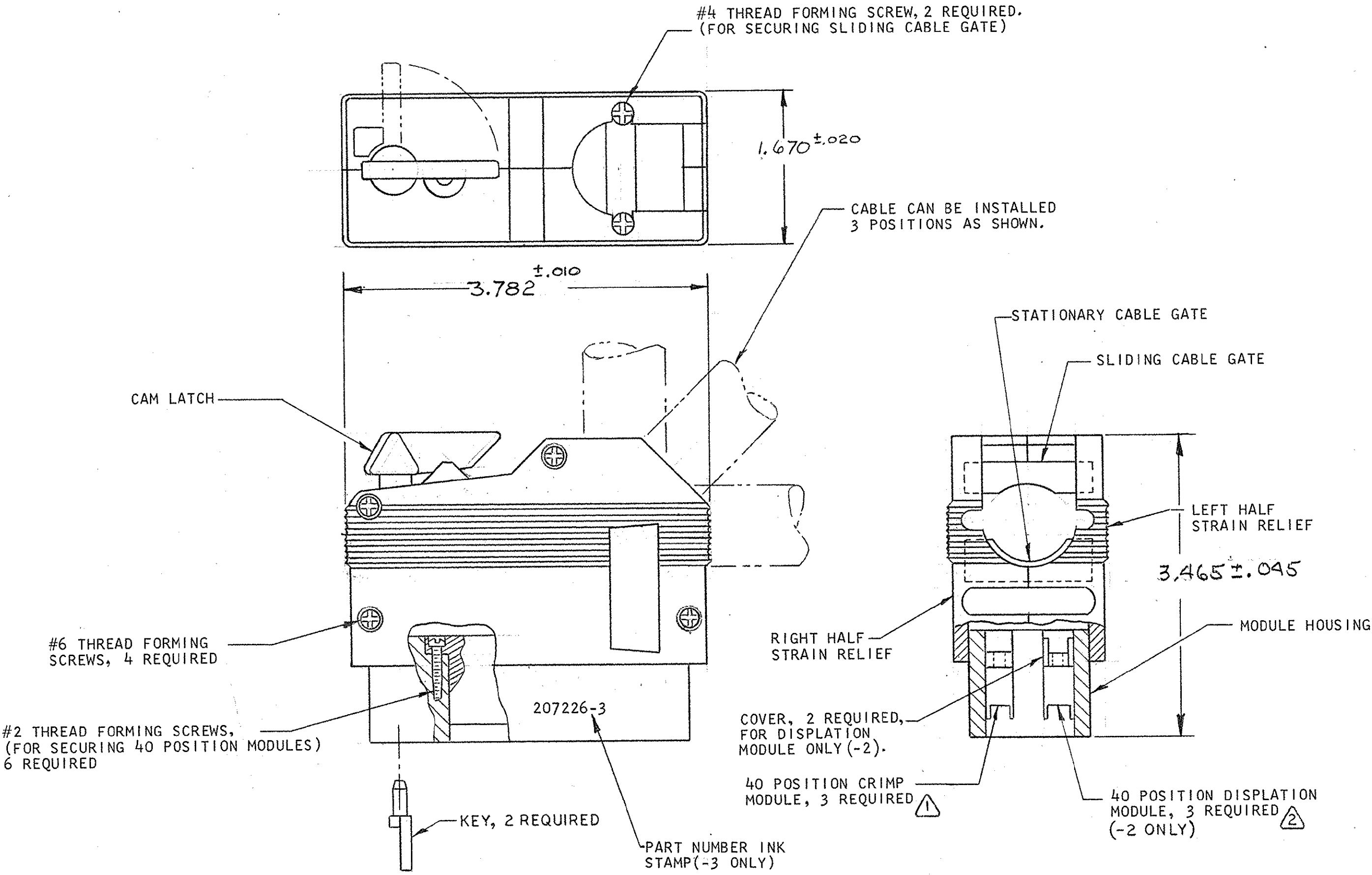


© COPYRIGHT 1975 BY AMP INCORPORATED, HARRISBURG, PA.
 ALL INTERNATIONAL RIGHTS RESERVED. AMP INCORPORATED PRODUCTS
 COVERED BY U. S. AND FOREIGN PATENTS AND/OR PATENTS PENDING.

UNPUBLISHED WORKS
 REPRODUCED WITHOUT WRITTEN PERMISSION
 OF AMP INCORPORATED.

- 207226-1 1. AS SHOWN, ⁵
 2. WITH 3-40 POSITION CRIMP MODULES.
- 207226-2 1. SAME AS -1 EXCEPT:
 2. WITH 3-40 POSITION DISPLATION MODULES.
- OBSOLETE** 1. SAME AS -1 EXCEPT:
 2. AMP PART NUMBER INK STAMPED ON EITHER
 SIDE OF HOUSING
- OBSOLETE** 1. SAME AS -1 EXCEPT:
 2. FOR CABLE .395-.600 DIA.

REVISIONS					
A/P	F	ZONE	LTR	DESCRIPTION	DATE APPROVED
	✓		D	RELEASED	11/4/75 [Signature]
	✓		A	ADD OVERALL DIM'S, E-397	4-27-76 [Signature]
	✓		B	ADDED -3 PER ECN H-737	5-12-76 [Signature]
	✓		C	ADDED -4 PER ECN R-1490	9-17-85 [Signature]
	✓		D	OBS. -3 & -4 / ECN R-2520	1-21-87 [Signature]
	✓		E	REV PER 0630-0401-03 CT	2-04 [Signature]



- ¹ 40 POSITION CRIMP MODULES ACCEPT "F" CRIMPED CONTACTS,
 (CONTACTS NOT SUPPLIED, MUST BE ORDERED SEPARATELY).
- ² 40 POSITION DISPLATION MODULES ARE SUPPLIED WITH CONTACTS.
- ³ MAT'L-ALL PARTS: GLASS FILLED BLACK THERMOPLASTIC.
- ⁴ ALL ASSY SCREWS ARE STEEL,ZINC PLATED.
- ⁵ FOR CABLE .750 -1.000 DIA.

UNLESS OTHERWISE SPECIFIED DIMENSIONS ARE IN INCHES. TOLERANCES ON: DECIMALS ± # ANGLES ± #		CONTRACT NO		PART NO	
MATERIAL ³ / ₄		DR [Signature] 12/4/75		AMP INCORPORATED Harrisburg, Pa.	
FINISH		CHK [Signature] 12-16-75		NAME	
		APPD [Signature] 12-10-75		CABLE KIT, SIZE I, 120 POSITION, ZERO ENTRY CONN., SERIES "CR"	
		APPD [Signature] 12-16-75		SIZE CODE IDENT NO DRAWING NO	
		DSGN APPD		C 00779 207226	
		OTHER APPD		SCALE # "CR" SHEET 1 OF 1	

CUSTOMER DRAWING

单击下面可查看定价，库存，交付和生命周期等信息

[>>TE Connectivity\(泰科\)](#)