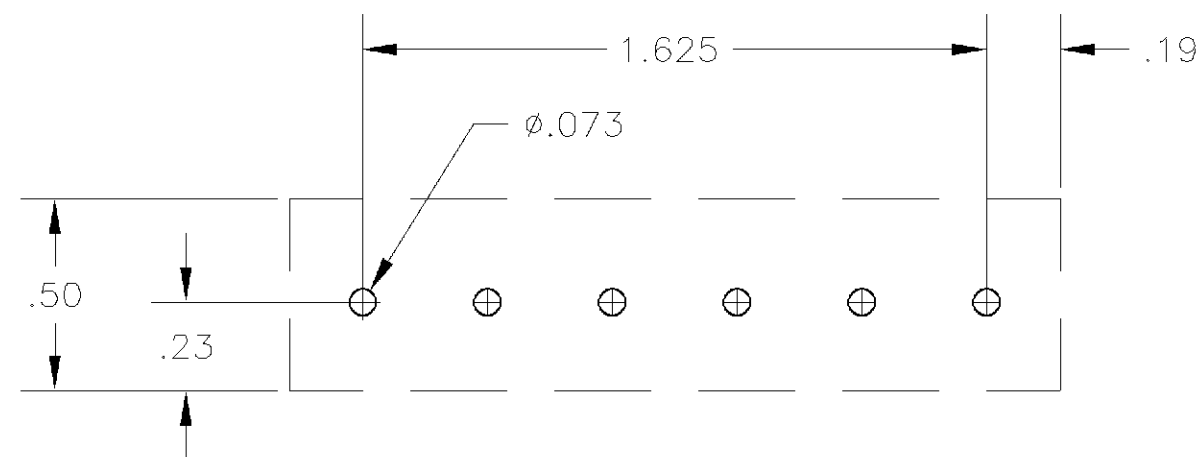
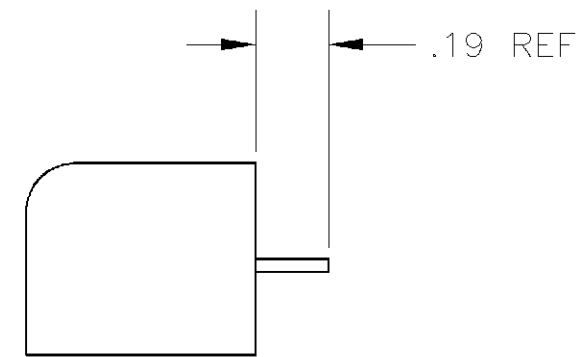
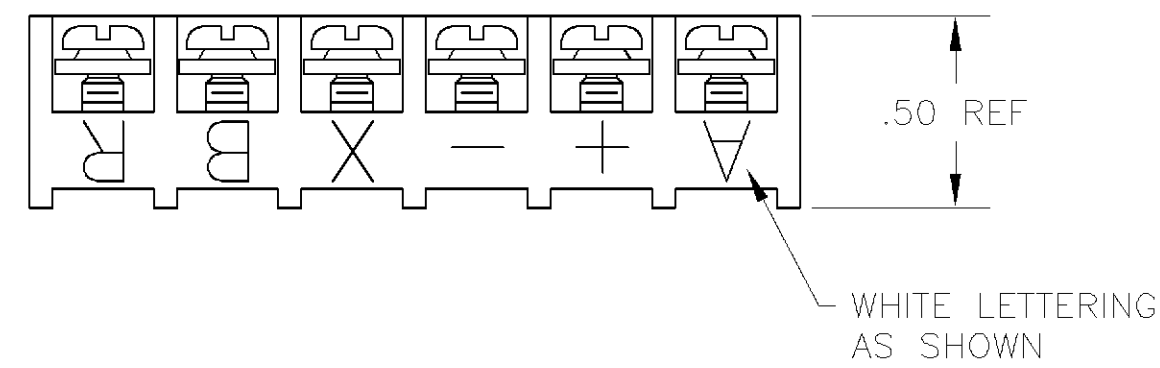
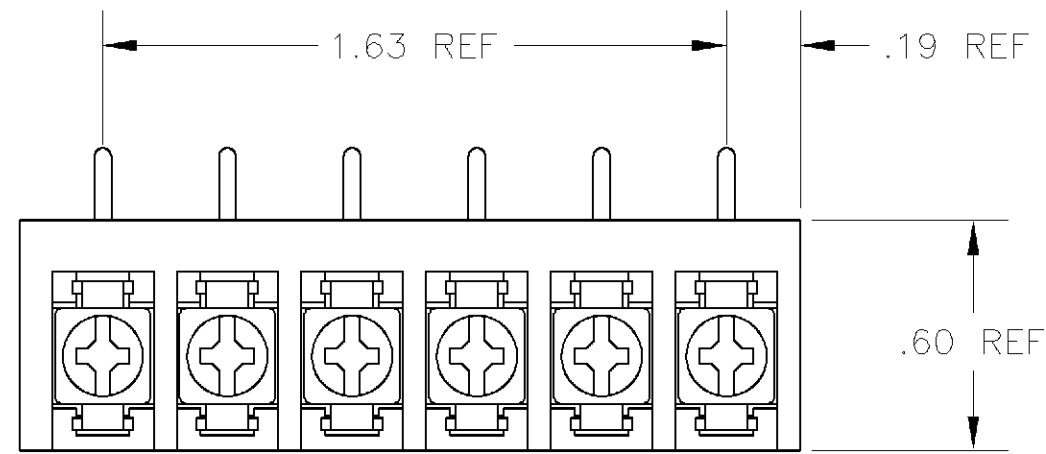


THIS DRAWING IS UNPUBLISHED. RELEASED FOR PUBLICATION  
 © COPYRIGHT BY TYCO ELECTRONICS CORPORATION. ALL RIGHTS RESERVED.

LOC		DIST		REVISIONS			
P	LTR	DESCRIPTION	DATE	DWN	APVD		
	A	RELEASE PER 0G3B-0332-02	6/24/02	SS	SRY		

**SPECIFICATIONS:**  
**MATERIALS:**  
 HOUSING: POLYAMIDE, UL94V-0, COLOR: BLACK  
 TERMINALS: COPPER ALLOY, TIN PLATED  
 SCREWS: #4-40 STEEL, ZINC PLATED WITH CLEAR CHROMATE.  
**ELECTRICAL:**  
 RATING: 20A, 150V, (300V LIMITED RATING)  
**MECHANICAL:**  
 WIRE RANGE: 14 AWG - 22 AWG  
 MAXIMUM TIGHTENING TORQUE: 7 IN-LBS  
 UL FILE #E54800  
 CSA FILE #LR30811



RECOMMENDED HOLE LAYOUT  
 TOLERANCE  $\pm.002$ , UNLESS OTHERWISE NOTED

1546283-1  
 PART NUMBER

THIS DRAWING IS A CONTROLLED DOCUMENT.		DWN	S SCHLEGEL	13MAY02	<b>BUCHANAN</b> Tyco Electronics Corporation Harrisburg, PA 17105				
DIMENSIONS: INCHES		CHK	S R YODER	5/14/02					
TOLERANCES UNLESS OTHERWISE SPECIFIED:		APVD	S R YODER	5/14/02					
0 PLC $\pm -$ 1 PLC $\pm -$ 2 PLC $\pm .01$ 3 PLC $\pm .005$ 4 PLC $\pm .0005$ ANGLES $\pm -$		PRODUCT SPEC	NAME			4PCR-06-006 SPECIAL MARKING, A+-XBR			
MATERIAL		FINISH		WEIGHT	SIZE	CAGE CODE	DRAWING NO	RESTRICTED TO	
-		-		-	A2	00779	C=1546283	-	
CUSTOMER DRAWING				SCALE	1:1	SHEET	1 OF 1	REV	A

单击下面可查看定价，库存，交付和生命周期等信息

[>>TE Connectivity\(泰科\)](#)