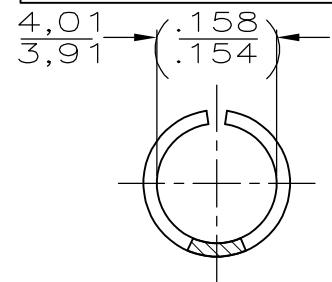
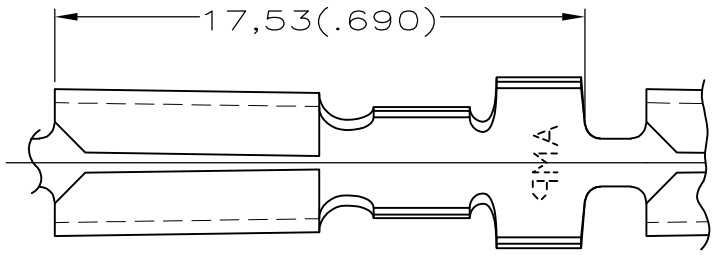
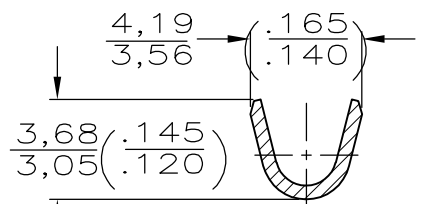
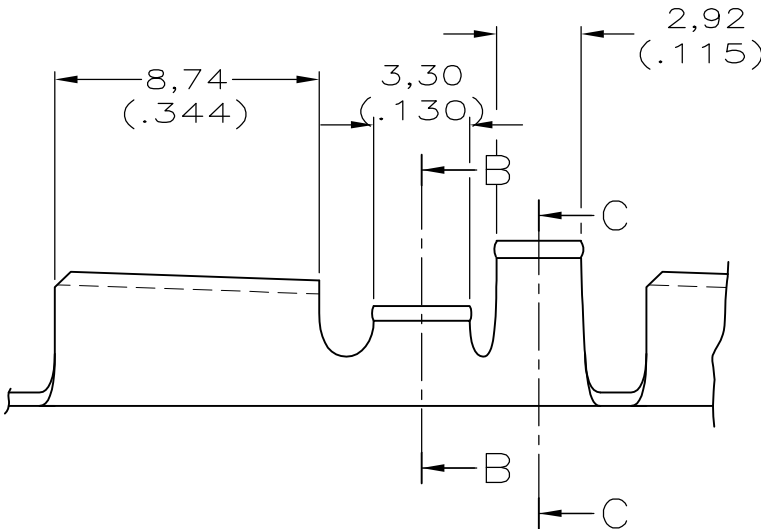


LOC	DIST	REVISIONS			DATE	DWN	APVD
—	—	P	LTR	DESCRIPTION			
		D2		REVISED PER ECO-15-005127	11MAY2015	NG	PS

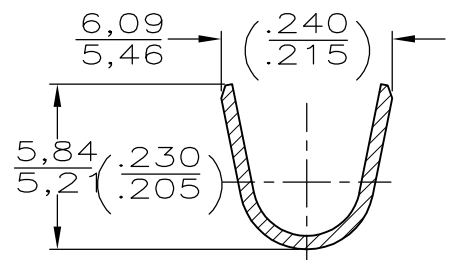
WIRE RANGE :  
0,8–2,0mm<sup>2</sup> (18–14 AWG)  
INSULATION RANGE :  
3,30–4,45 DIA.  
(.130–.175)



VIEW A-A



SECTION B-B



SECTION C-C

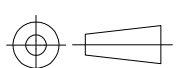
NOTES:

- 1 CONTINUOUS STRIP, ON REELS.
- 2 DIM'S IN BRACKETS ARE IN INCHES.
- 3 SPLICE-FREE.

OBSOLETE	TIN PLATED	0,46 (.018) THK. BRASS	-62734-4
OBSOLETE	SILVERPLATED	0,46 (.018) THK. BRASS	3-62734-3
	SILVERPLATED	0,46 (.018) THK. BRASS	62734-2
	FINISH	MATERIAL	PARTNUMBER

THIS DRAWING IS UNPUBLISHED. ALL RIGHTS RESERVED. By - COPYRIGHT -

DIMENSIONS: mm	DWN	R.DAAMEN	02-09-92	MATERIAL	-	FINISH	-
	CHK	R.DIJKSTRA	-	TE Connectivity .156 DIA. PIN RECEPTACLE			
TOLERANCES UNLESS OTHERWISE SPECIFIED:	APVD	L.v.SOEST	-				
0 PLC ± -	PRODUCT SPEC	-	-	NAME	.156 DIA. PIN RECEPTACLE		
1 PLC ± -	APPLICATION SPEC	-	-	SIZE	CAGE CODE	DRAWING NO	RESTRICTED TO
2 PLC ± -	WEIGHT	-	-	A4	00779	C-62734	-
3 PLC ± -				CUSTOMER DRAWING			SCALE
4 PLC ± -							1:1
ANGLES ± -							SHEET
							1 OF 1
							REV
							D2



单击下面可查看定价，库存，交付和生命周期等信息

[>>TE Connectivity\(泰科\)](#)