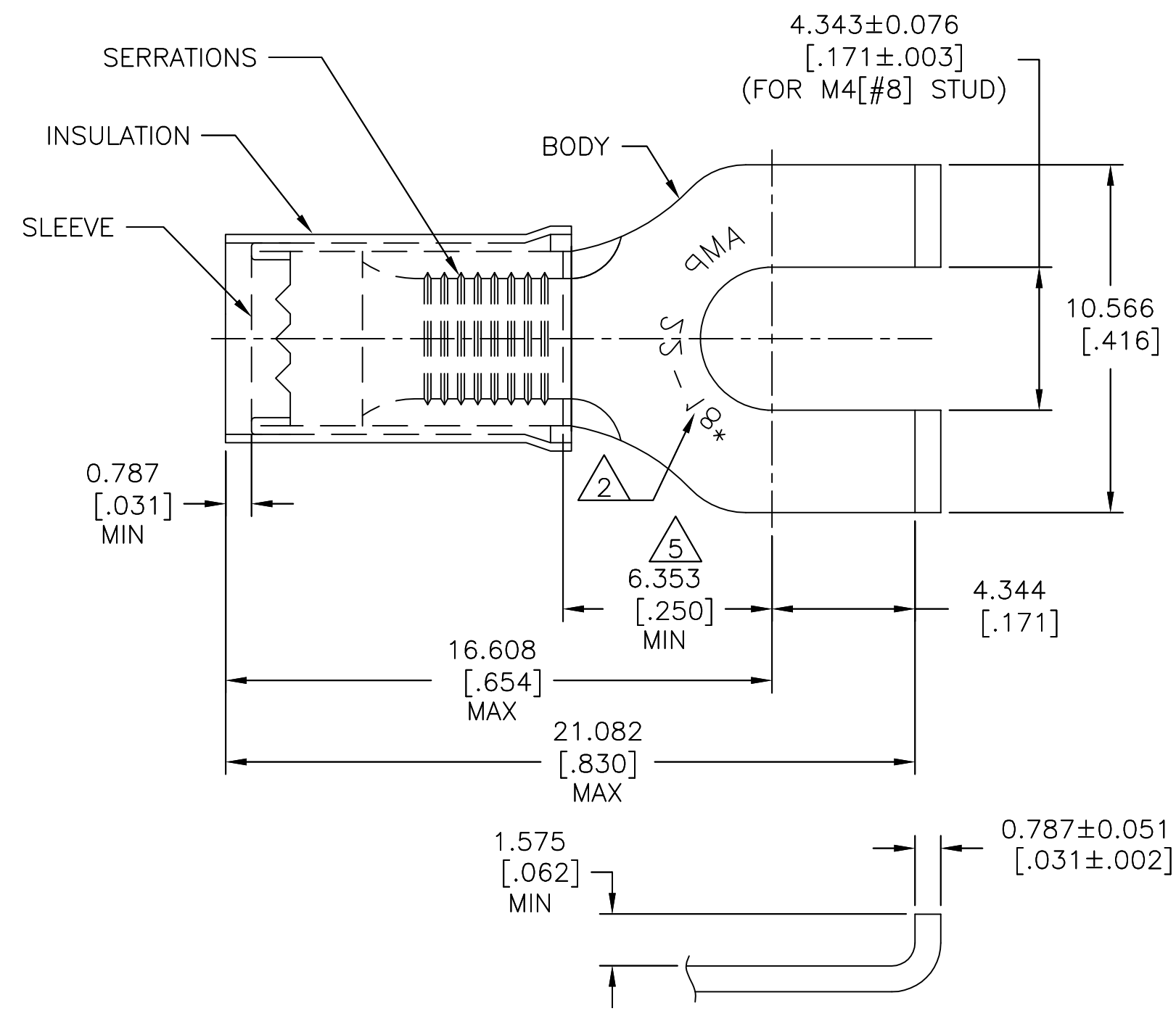


REVISIONS				
P	LTR	DESCRIPTION	DATE	APVD
	K1	REDRAWN PER ECO-17-007400	14DEC2017	RS DR

AMP WIRE RANGE	Listed FILE E13288	LR7189 Certified
22-16 AWG SOLID OR STRANDED	22-16 AWG SOLID OR STRANDED	22-16 AWG SOLID OR STRANDED



- 1 WIRE INSULATION: $\phi 2.667-3.556[\phi .105-.140]$
- 2 STAMP AMP 22-18* APPROX AS SHOWN. 22-16 TERMINALS ARE STAMPED 22-18 IN ACCORDANCE WITH MILITARY SPEC SAE AS 7928 COMMERCIAL RANGE IS 22-16.
- 3 FINISH:
BODY & SLEEVE: TIN PLATE PER ASTM B545.
INSULATION: COLOR-RED.
- 4 MATERIAL:
BODY & SLEEVE: COPPER PER ASTM B152.
INSULATION : NYLON
- 5 APPLIES FROM EDGE OF METAL WIRE BARREL TO CENTER OF STUD HOLE.

5000	ON TAPE, REEL	2-32498-1
1000	LOOSE PIECE	32498
QTY	PACKAGE TYPE	PART NO

AMP INCORPORATED
CUSTOMER SERVICE SYSTEMS

FOR ADDITIONAL PRODUCT INFORMATION OR COPIES OF DRAWINGS AND TECHNICAL DOCUMENTS
 PRODUCT INFORMATION CENTER
 1-800-522-6752

FOR APPLICATION TOOLING INFORMATION
 TOOLING ASSISTANCE CENTER
 1-800-722-1111

FOR ORDER ENTRY
 1-800-526-5142

MAX RECOMMENDED OPERATING TEMPERATURE:
 105°C [221°F]

VOLTAGE RATING:
 300 V MAX

CIRCULAR MIL AREA:
 0.26-1.65mm² [509-3,260]
 SOLID OR STRANDED

THIS DRAWING IS A CONTROLLED DOCUMENT.

DIMENSIONS: mm [INCHES]	TOLERANCES UNLESS OTHERWISE SPECIFIED:
	0 PLC ± -
	1 PLC ± -
	2 PLC ± -
	3 PLC ± 0.127[.005]
	4 PLC ± -
	ANGLES ± 5°
MATERIAL	FINISH
4	3

DWN	14DEC2017
RAVI S	
CHK	14DEC2017
ROHDE DANIEL F	
APVD	14DEC2017
ROHDE DANIEL F	
PRODUCT SPEC	
UL 486 A-B	
APPLICATION SPEC	
114-2157	
WEIGHT	-

TE Connectivity			
NAME WIRE TERMINAL, P.I.D.G, FLANGED SPADE, WIRE SIZE: 22-16 AWG			
SIZE	CAGE CODE	DRAWING NO	RESTRICTED TO
A3	00779	C-32498	-
CUSTOMER DRAWING		SCALE 1:1	SHEET 1 OF 1 REV K1

单击下面可查看定价，库存，交付和生命周期等信息

[>>TE Connectivity\(泰科\)](#)