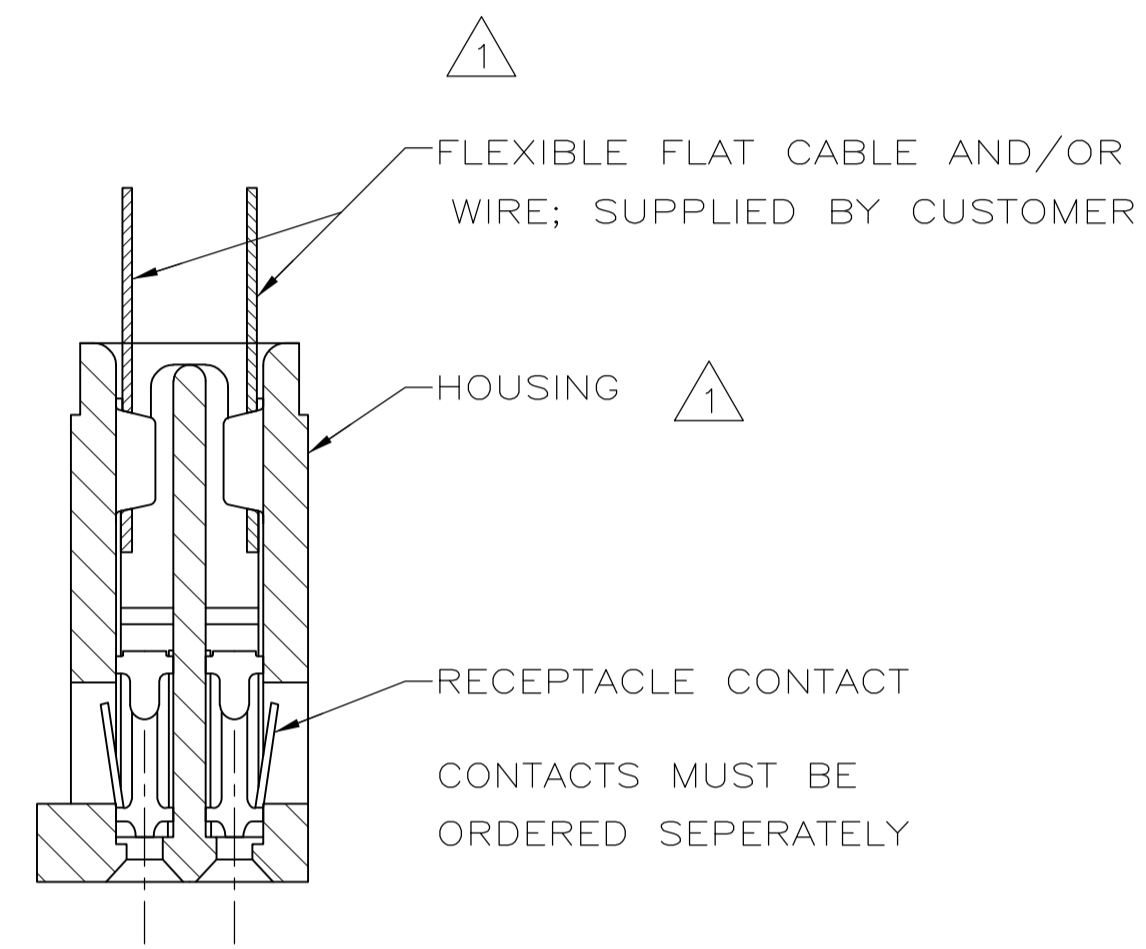
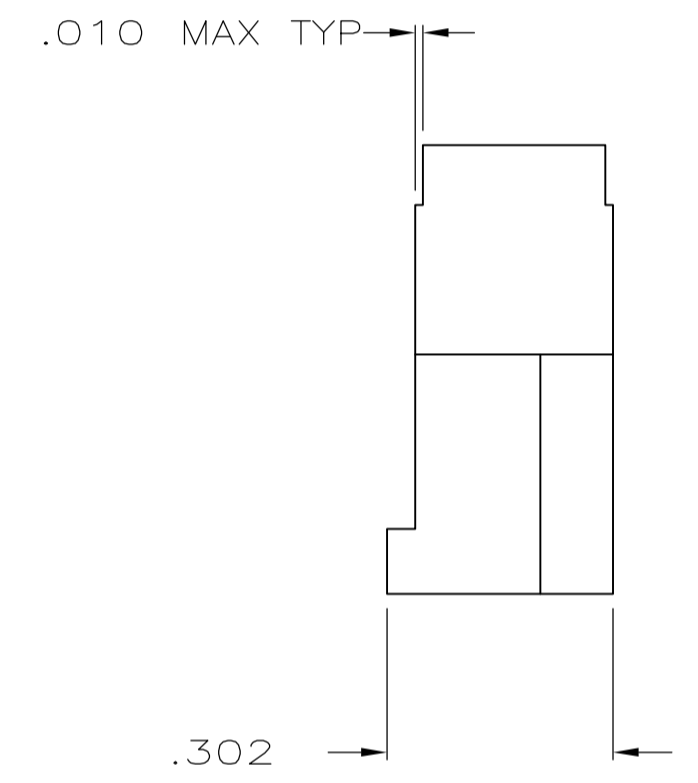
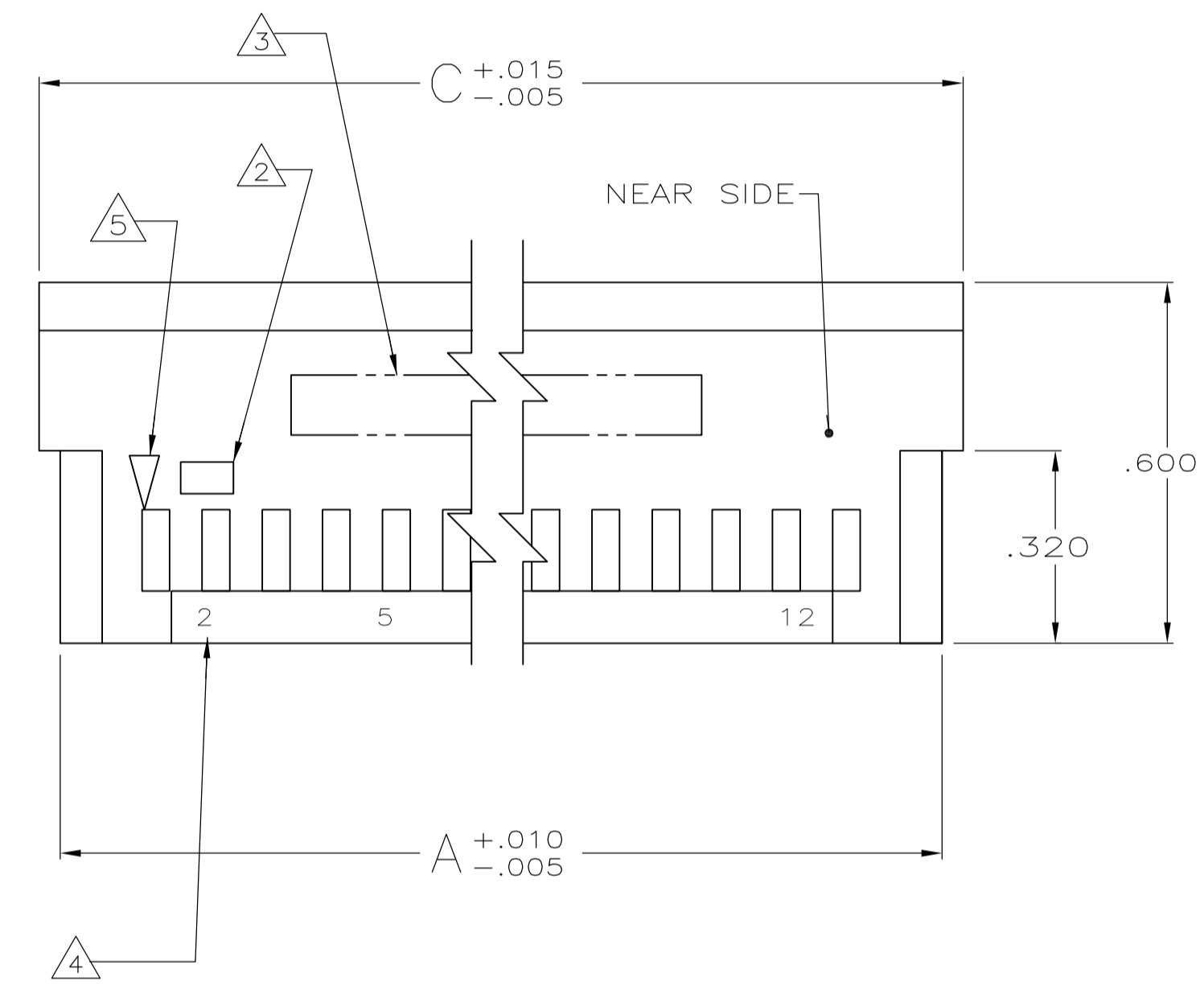
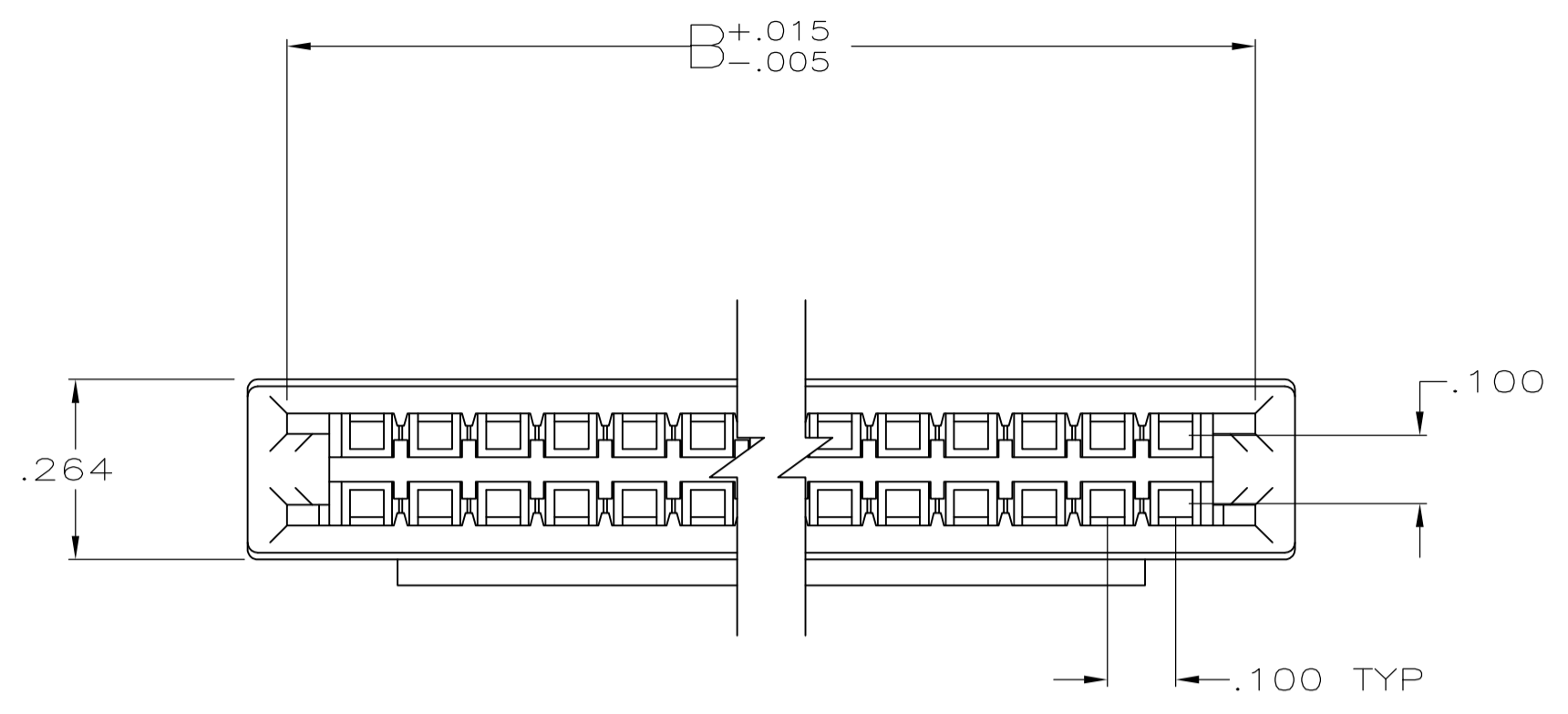


| LOC | DIST | P | F | ZONE | LTR | DESCRIPTION | DATE | APPD |
|-----|------|---|---|------|-----|-------------------------------------------------------------------------------|----------|------|
| AR | 39 | | | | J | REV&REDRAWN ECN 2275 | - | - |
| | | | | | K | REACTIVATE 3-1 PER ECN BD3808 | 4-3-90 | GDM |
| | | | | | L | REV PER ECN BD4149 | 8-15-90 | - |
| | | | | | M | REV PER EC BD6679 | 03/04/93 | GDM |
| | | | | | N | OBsolete -38 PER EC 0020-0943-93 | 11/18/93 | DK |
| | | | | | P | SUPSD -4,-6,-8,-16,-18,-24, -26,-28,-30,-32,-34,-36 PER EC 0020-0700-94 | 04/24/95 | DK |
| | | | | | R | OBS -2,-10,-14 PER EC 0020-0680-94 | 04/24/95 | DK |
| | | | | | RI | REVISED PER ECO-09-020774 | 21AUG09 | AEG |



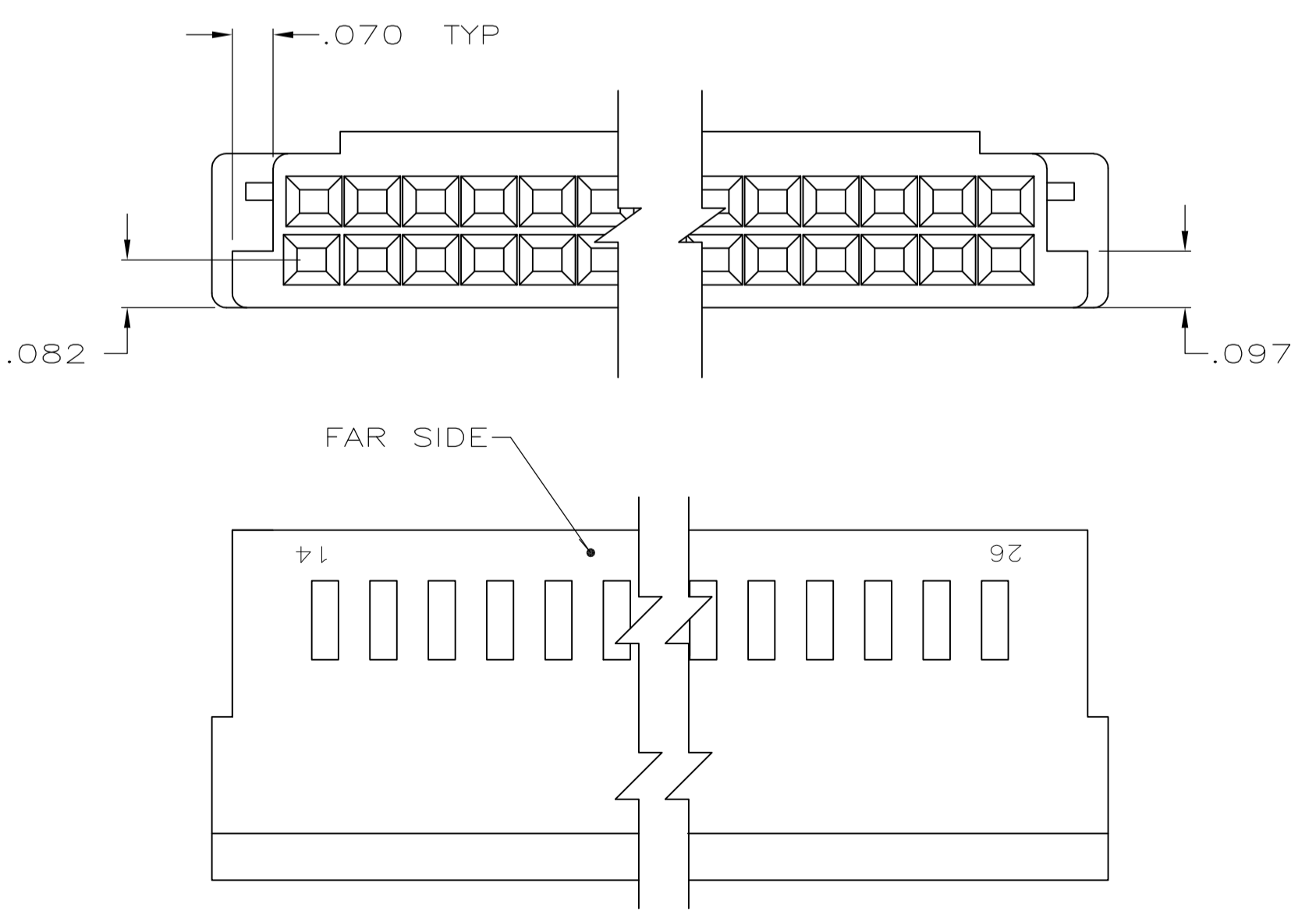
CRIMPED CONTACTS INSERTED FOR REFERENCE ONLY

- ① HOUSING WILL ACCOMMODATE FLEXIBLE FLAT CABLE .050 OR .062 WIDE CONDUCTORS ON .100 CENTERS AND/OR #22-32 AWG WIRE WITH INSULATION RANGE OF .025 TO .056
- ② AMP TRADEMARK MOLDED IN THIS AREA
- ③ PART NO. AND DATE CODE INK STAMPED, WHITE.
- ④ CONTACT POSITION NOS. INK STAMPED, WHITE, BOTH SIDES (SEE TABLE)
- ⑤ INDICATES POSITION 1
- ⑥ PART NO. SUPERSEDED BY AS MOLDED PART NO.
- ⑦ OBSOLETE PART NO.

| ⑧ PART NUMBER | SUPERSEDED BY |
|---------------|---------------|
| 86673-4 | 88179-6 |
| 86673-6 | 88179-5 |
| 86673-8 | 2-88179-2 |
| 1-86673-6 | 2-88179-4 |
| 1-86673-8 | 1-88179-4 |
| 2-86673-4 | 3-88179-0 |
| 2-86673-6 | 2-88179-0 |
| 2-86673-8 | 1-88179-2 |
| 3-86673-0 | 3-88179-2 |
| 3-86673-2 | 88179-4 |
| 3-86673-4 | 3-88179-4 |
| 3-86673-6 | 3-88179-6 |

⑨ OBSOLETE PARTS: OBSOLETE CIS STREAMLINING PER D.RENAUD/D.SINISI

| ⑩ | NEAR SIDE | FAR SIDE | C | B | A | NO OF POSN | AS MOLDED PART NO. |
|-----------|-----------------------|-------------------------|-------|-------|-------|------------|--------------------|
| 3-86673-7 | 2,5,10 | 12,15,22 | 1.350 | 1.234 | 1.280 | 22 | 3-86673-8 |
| 3-86673-5 | 2,5,10,16 | 18,25,30,34 | 1.950 | 1.834 | 1.880 | 34 | 3-86673-6 |
| 3-86673-3 | 2,5 | 7,12 | .850 | .734 | .780 | 12 | 3-86673-4 |
| 3-86673-1 | 2,5,10,15,20,25,29 | 31,35,40,45,50,55,60 | 3.250 | 3.134 | 3.180 | 60 | 3-86673-2 |
| 2-86673-9 | 2 | | .550 | .434 | .480 | 6 | 3-86673-0 |
| 2-86673-7 | 2,5,10,15,20,24 | 26,30,35,40,45,50 | 2.750 | 2.634 | 2.680 | 50 | 2-86673-8 |
| 2-86673-5 | 2,5,10,17 | 19,25,30,36 | 2.050 | 1.934 | 1.980 | 36 | 2-86673-6 |
| 2-86673-3 | 2,4 | 6,10 | .750 | .634 | .680 | 10 | 2-86673-4 |
| 2-86673-1 | 2,5,10,13 | 15,20,25,28 | 1.650 | 1.534 | 1.580 | 28 | 2-86673-2 |
| 1-86673-9 | 2,5,12 | 14,20,26 | 1.550 | 1.434 | 1.480 | 26 | 2-86673-0 |
| 1-86673-7 | 2,5,11 | 13,20,24 | 1.450 | 1.334 | 1.380 | 24 | 1-86673-8 |
| 1-86673-5 | 2,5,10,15,21 | 23,30,35,40,44 | 2.450 | 2.334 | 2.380 | 44 | 1-86673-6 |
| 1-86673-3 | 2,5,10,15,20,25,28 | 30,35,40,45,50,55,58 | 3.150 | 3.034 | 3.080 | 58 | 1-86673-4 |
| 1-86673-1 | 2,5,8 | 10,15,18 | 1.150 | 1.034 | 1.080 | 18 | 1-86673-2 |
| 86673-9 | 2,5,10,15,20,25,32 | 34,40,45,50,55,60,66 | 3.550 | 3.434 | 3.480 | 66 | 1-86673-0 |
| 86673-7 | 2,5,10,15,19 | 21,25,30,35,40 | 2.250 | 2.134 | 2.180 | 40 | 86673-8 |
| 86673-5 | 2,5,9 | 11,15,20 | 1.250 | 1.134 | 1.180 | 20 | 86673-6 |
| 86673-3 | 2,5,10,15,18 | 20,25,30,35,38 | 2.150 | 2.034 | 2.080 | 38 | 86673-4 |
| 86673-1 | 2,5,10,15,20,25,30,34 | 36,40,45,50,55,60,65,70 | 3.750 | 3.634 | 3.680 | 70 | 86673-2 |



| | | | | | | | |
|-----------------------------------------------------------------------------------------------------------------------------------|-----------|-------------------------------------------------------------------------------------------------------------|---|-----------------------------------------------|------------------|---------------------|--------------------|
| INK STAMPED PART NO. | NEAR SIDE | FAR SIDE | C | B | A | NO OF POSN | AS MOLDED PART NO. |
| CAVITY POSN NO. STAMPED | | | | | | | |
| PART NO | | | | | | | |
| DO NOT SCALE PRINT. UNLESS SPECIFIED DIMENSIONS IN INCHES TOLERANCES - ON : 2 PLC DEC ± .005 3 PLC DEC ± .005 ANGLES ± - | | DR 2/16/89 J. GALLUCCI CHK 3-3-89 D.ROCKER APPD 3-3-89 G.D.MILLER APPD 3-3-89 W.PARKER | | AMP INCORPORATED Harrisburg, Pa. 17105 | | | |
| MATERIAL NYLON, GLASS FILLED COLOR: BLACK | | PRODUCT SPEC | | NAME HOUSING, RCPT, DBL ROW, .100 , FFC | | | |
| FINISH | | APPLICATION SPEC | | SIZE D | FSCM NO 00779 | DRAWING NO 86673 | |
| WEIGHT | | SCALE 4:1 | | SHEET | | 1 OF 1 | |

单击下面可查看定价，库存，交付和生命周期等信息

[>>TE Connectivity\(泰科\)](#)