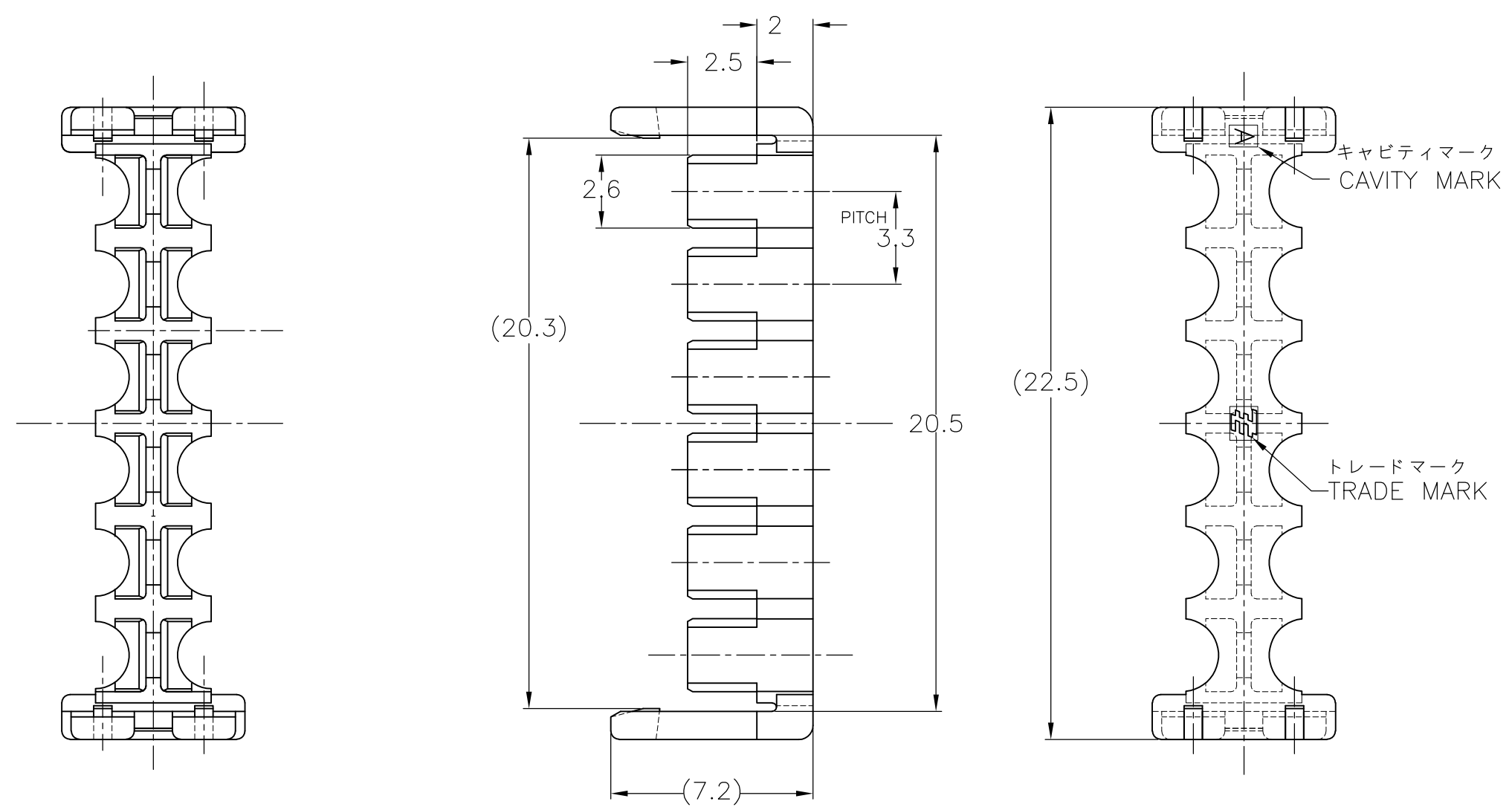


THIS DRAWING IS UNPUBLISHED. RELEASED FOR PUBLICATION JUL, 2005.
 © COPYRIGHT 2005 BY TYCO ELECTRONICS CORPORATION. ALL INTERNATIONAL RIGHTS RESERVED.

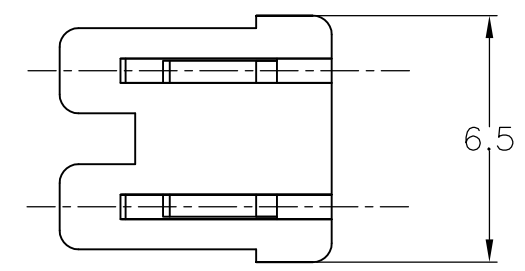
LOC	DIST	REVISIONS					
J	/	P	LTR	DESCRIPTION	DATE	DWN	APVD
		B		REVISED ECR-10-019566	22SEP2010	T.T	T.M

-1; AS SHOWN



TABLE

ダブルロックプレート (DOUBLE LOCK PLATE)	6/6ナイロンガラス強化 (UL94V-0) (6/6 NYLON GLASS FILLED) (UL94V-0)
名称 (NAME)	材料 (MATERIAL)



- 1 適用製品型番
プラグハウジング: *-1871570-*
 - 2 適用電線範囲
電線被覆外径: $\phi 1.5 \sim \phi 2.0$ mm
-
- 1 APPLICABLE P/N
PLUG HOUSING: *-1871570-*
 - 2 APPLICABLE WIRE RANGE
INSULATION DIA: $\phi 1.5 \sim \phi 2.0$ mm

BLACK	1871822-1
COLOR	PART NUMBER

THIS DRAWING IS A CONTROLLED DOCUMENT.		DWN T.HATANO 21JUL2005	Tyco Electronics Corporation Kawasaki, Japan	
DIMENSIONS: 単位: 耗 mm		CHK N.YAMASAKI 21JUL2005	NAME N.YAMASAKI	
TOLERANCES UNLESS OTHERWISE SPECIFIED: 一般公差		APVD N.YAMASAKI 21JUL2005	PRODUCT SPEC 製品規格 108-78231	
0 PLC ± 0.3 1 PLC ± 0.3 2 PLC \pm 3 PLC \pm 4 PLC \pm ANGLES \pm		APPLICATION SPEC 取付適用規格		NAME 名称 GRACE INERTIA CONNECTOR 3.3 DOUBLE LOCK PLATE 12POS. 2-ROW, M-TYPE
MATERIAL 材料 SEE TABLE	FINISH 仕上	WEIGHT	SIZE A3	CAGE CODE 00779
		DRAWING NO 番号 G-1871822		RESTRICTED TO 番号
		CUSTOMER DRAWING		SCALE 尺度 5:1
		SHEET 1 OF 1		REV B

单击下面可查看定价，库存，交付和生命周期等信息

[>>TE Connectivity\(泰科\)](#)