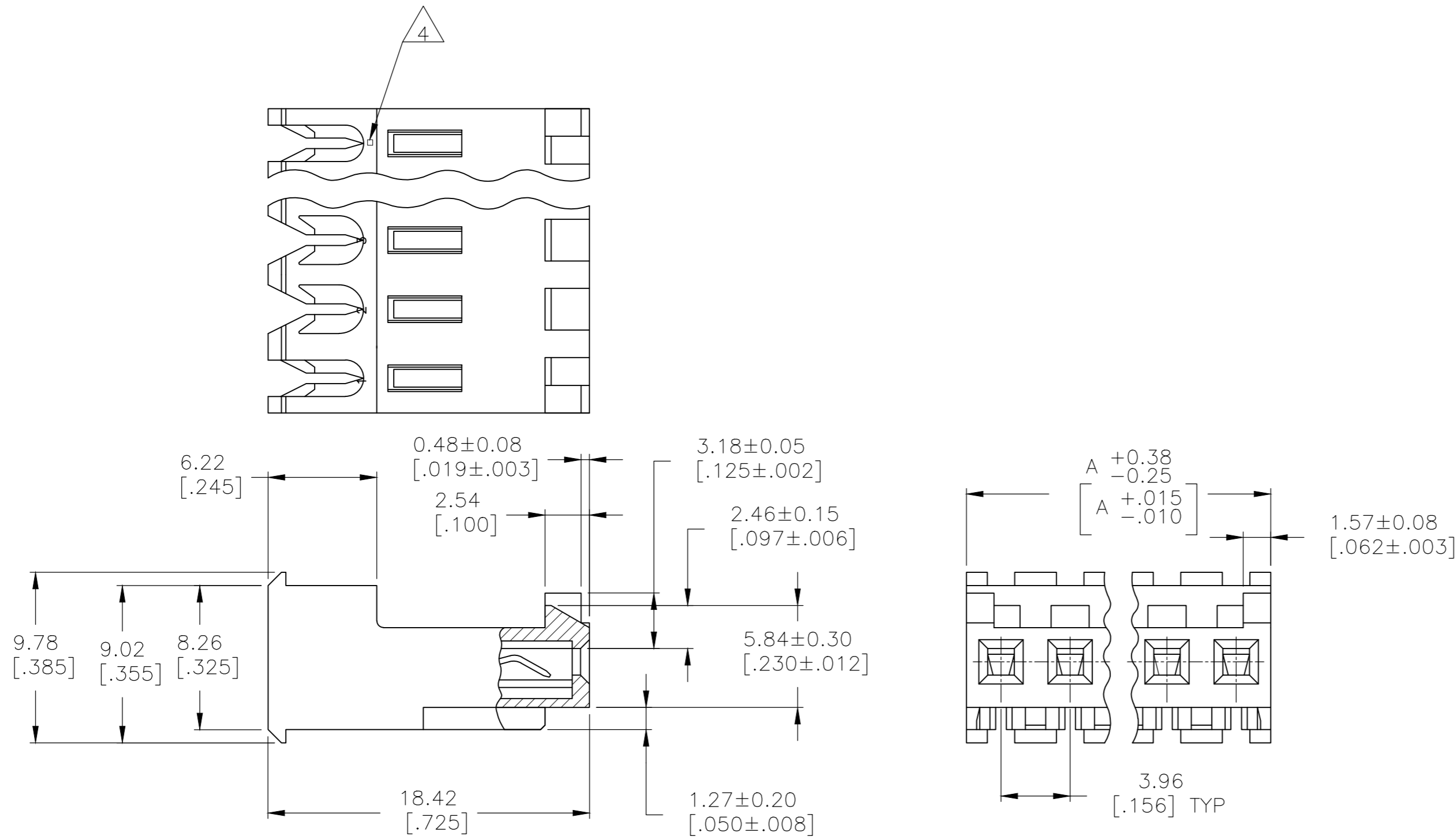


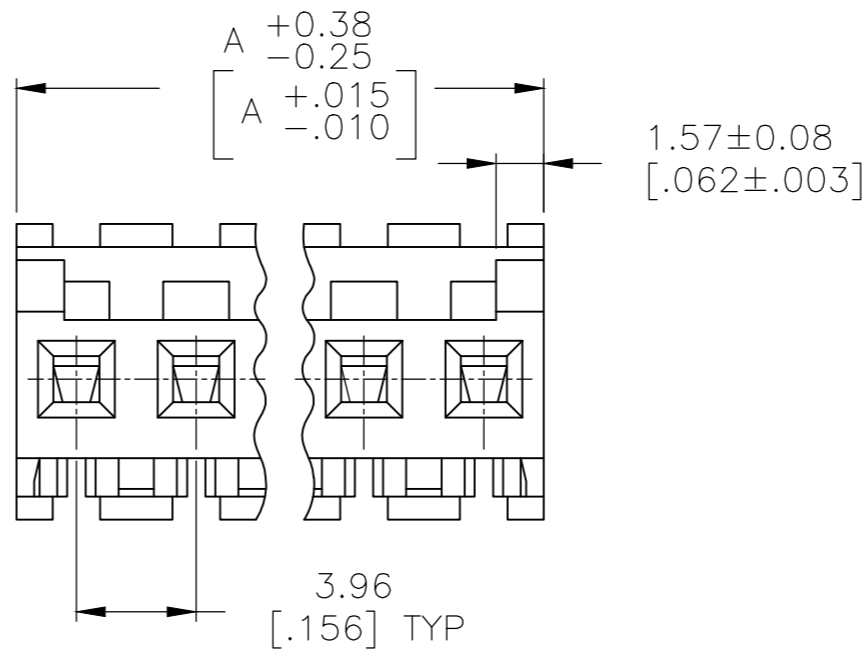
THIS DRAWING IS UNPUBLISHED. RELEASED FOR PUBLICATION  
 © COPYRIGHT - By - TE CONNECTIVITY ALL RIGHTS RESERVED.

LOC		DIST		REVISIONS			
P	LTR	DESCRIPTION		DATE	DWN	APVD	
CM	00	E		REVISED PER ECR-20-000822	28MAY2020	PC SW	



1 MATERIAL: CONNECTOR - NYLON UL94V-2 (RED).  
 CONTACTS - 0.30[.012] THICK COPPER ALLOY  
 0.00076[.000030] GOLD THK OR 0.00008[.000003] MIN THK  
 GOLD FLASH OVER 0.00068[.000027] THK PALLADIUM NICKEL,  
 PER TE CONNECTIVITY'S DISCRETION, IN CONTACT  
 AREA WITH BRIGHT TIN-LEAD FOR 644720-2 THRU  
 1-644720-4, MATTE WHISKER MITIGATED TIN FOR  
 3-644720-2 THRU 4-644720-4 OVER NICKEL  
 UNDERPLATE.

- 2 CONTACTS ACCEPT 22 AWG WIRE WITH 2.41[.095] MAX INSULATION DIAMETER.
- 3 CONTACTS MUST ACCEPT 1.14±0.03[.045±.001] SQUARE POST AND REMAIN LOCKED IN POSITION.
- 4 IDENTIFICATION NUMBER FOR LAST CIRCUIT MAY NOT APPEAR ON ALL ASSEMBLIES.
- 5 DIMENSIONS IN BRACKETS ARE IN INCHES.
- 6 HOUSING FEATURES ARE: FEED-THRU WITH LOCKING RAMP AND POLARIZING TAB.
- 7 OBSOLETE PARTS: OBSOLETE CIS STREAMLINING PER D.RENAUD/D.SINISI



7  
 SUPERSEDED  
 OBSOLETE  
 7  
 SUPERSEDED

DIM A	NO OF CIRCUITS	PART NO
55.47 [2.184]	14	4-644720-4
51.51 [2.028]	13	4-644720-3
47.55 [1.872]	12	4-644720-2
43.59 [1.716]	11	4-644720-1
39.62 [1.560]	10	4-644720-0
35.66 [1.404]	9	3-644720-9
31.70 [1.248]	8	3-644720-8
27.74 [1.092]	7	3-644720-7
23.77 [.936]	6	3-644720-6
19.81 [.780]	5	3-644720-5
15.85 [.624]	4	3-644720-4
11.89 [.468]	3	3-644720-3
7.92 [.312]	2	3-644720-2
55.47 [2.184]	14	<del>1-644720-4</del>
51.51 [2.028]	13	<del>1-644720-3</del>
47.55 [1.872]	12	<del>1-644720-2</del>
43.59 [1.716]	11	<del>1-644720-1</del>
39.62 [1.560]	10	<del>1-644720-0</del>
35.66 [1.404]	9	<del>644720-9</del>
31.70 [1.248]	8	<del>644720-8</del>
27.74 [1.092]	7	<del>644720-7</del>
23.77 [.936]	6	<del>644720-6</del>
19.81 [.780]	5	<del>644720-5</del>
15.85 [.624]	4	<del>644720-4</del>
11.89 [.468]	3	<del>644720-3</del>
7.92 [.312]	2	<del>644720-2</del>

THIS DRAWING IS A CONTROLLED DOCUMENT.		DWN B. LEWIS 24 AUG 95	TE Connectivity	
DIMENSIONS: mm [INCHES]		CHK R. SWING 24 AUG 95	MTA-156 CONNECTOR ASSEMBLY, 22 AWG, STANDARD	
TOLERANCES UNLESS OTHERWISE SPECIFIED:		APVD D. CLARK 24 AUG 95	NAME	RESTRICTED TO
0 PLC ± -	1 PLC ± -	PRODUCT SPEC	108-1051	
2 PLC ± -	3 PLC ± 0.13 [.005]	APPLICATION SPEC	114-1020	
4 PLC ± -	ANGLES ± -	WEIGHT	-	
MATERIAL 1	FINISH 1	SCALE	A2 00779 C-644720	
CUSTOMER DRAWING		SCALE	4:1	SHEET 1 OF 1
		REV	E	

单击下面可查看定价，库存，交付和生命周期等信息

[>>TE Connectivity\(泰科\)](#)