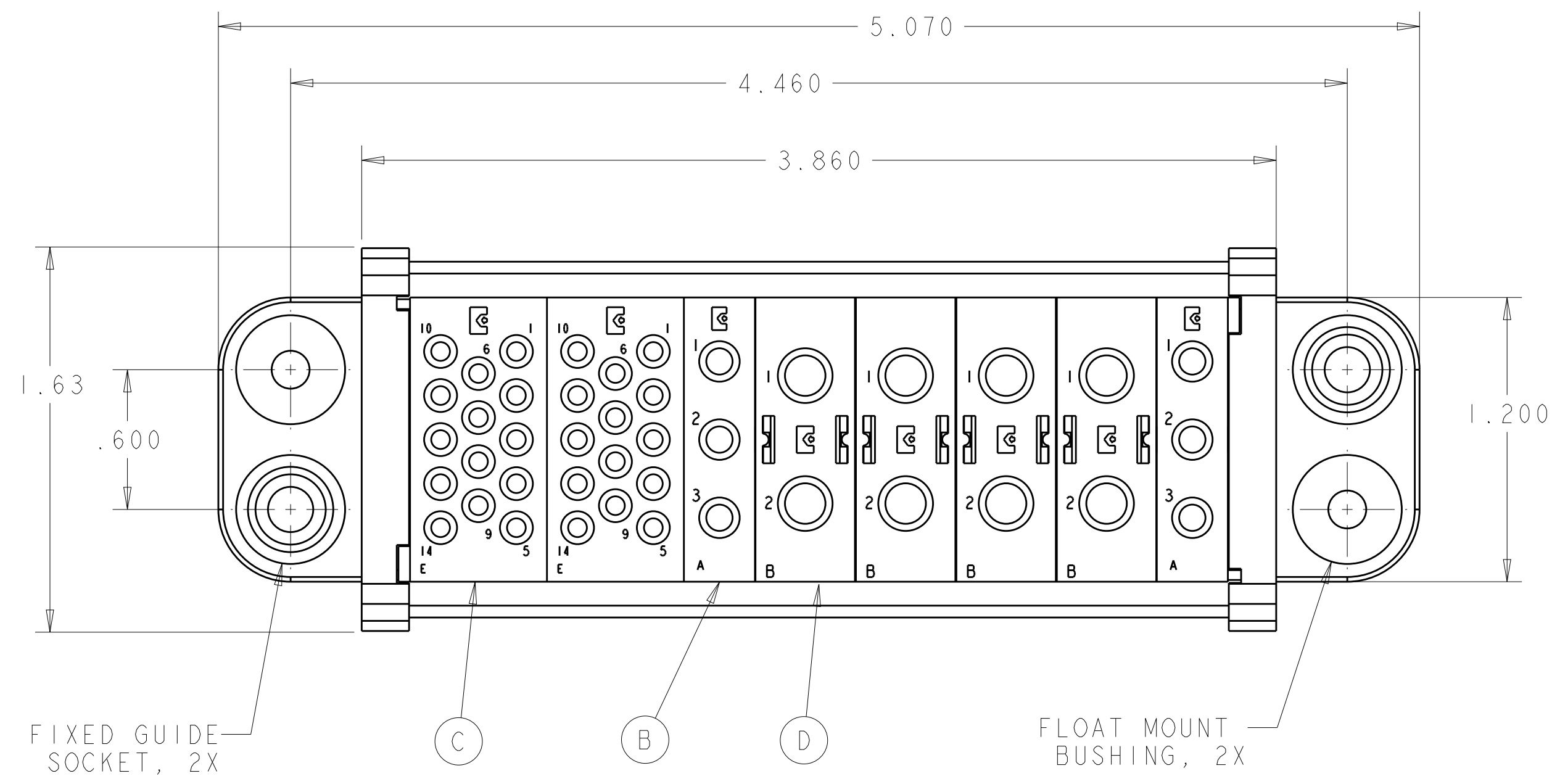
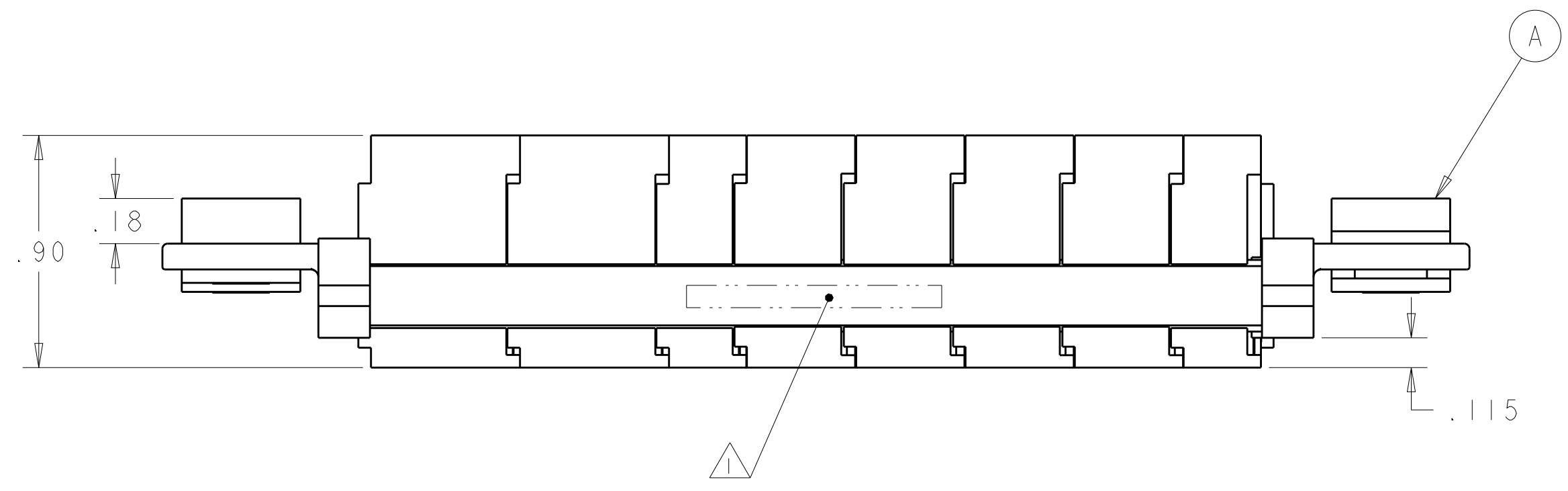


THIS DRAWING IS UNPUBLISHED. RELEASED FOR PUBLICATION 20
 © COPYRIGHT 20 BY - ALL RIGHTS RESERVED.

LOC		DIST		REVISIONS			
GP	00	P	LTR	DESCRIPTION	DATE	DWN	APVD
		C		REVISED PER ECO-12-017244	27SEP2012	KH	DO



- △ ITEMS PROVIDED TO THIS SPECIFICATION TO BE PERMANENTLY IDENTIFIED PER THE FOLLOWING IDENTIFIER:
- YEAR 1 WEEK 1
- TYCO ELECTRONICS P/N DATE CODE (e.g. 0212)
- XXXXXXXX-X XXXX
- △ 2 MODULES NOTED ARE FOR CRIMP REMOVABLE STYLE CONTACTS. ITEMS E, F AND G WILL BE PACKAGED AND SHIPPED LOOSE WITH THE CONNECTOR ASSEMBLY.
 - △ 3 MOUNTING FLANGE BUSHING ACCEPTS 6/32 SCREW (.156 DIA. CLEARANCE HOLE, FLOAT MOUNT) OR 8/32 SCREW (.173 DIA. CLEARANCE HOLE, FIXED MOUNT), USER SUPPLIED.
 - 4. CONNECTOR MATES WITH P/N 2085270-1 AND ELCON EDP20378.
 - 5. CONNECTOR IS A REPLACEMENT FOR ELCON CONNECTOR 799-283 (EDS10378)
 - 6. RAIL LENGTH OF (3.562)



8	6648317-1	SOCKET CONTACTS, CRIMP, SIZE No. 8	G
28	6648319-1	SOCKET CONTACTS, CRIMP, SIZE No. 16	F
6	6648318-1	SOCKET CONTACTS, CRIMP, SIZE No. 12	E
4	1648467-1	MODULE "B"	D
2	1648470-1	MODULE "E"	C
2	1648466-1	MODULE "A"	B
2	6648252-1	END CAP, GUIDE SOCKET, FLOAT MOUNT	A
-1	PART NO.	DESCRIPTION	ITEM NO.

THIS DRAWING IS A CONTROLLED DOCUMENT.

DWN: R. GRZYBOWSKI 26OCT2009
 CHK: D. ORRIS 26OCT2009
 APVD: M. PERCHERKE 26OCT2009

STE TE Connectivity

NAME: SOCKET CONNECTOR CRIMP CONTACTS W/ PANEL CUT-OUT, DOMINO

SIZE: A2 CAGE CODE: C-2085271 DRAWING NO: 2085271

MATERIAL: - TOLERANCES UNLESS OTHERWISE SPECIFIED: 0 PLC ±, 1 PLC ±, 2 PLC ±.02, 3 PLC ±.010, 4 PLC ±, ANGLES ±, FINISH ±

WEIGHT: -

CUSTOMER DRAWING SCALE: 2:1 SHEET 1 OF 2 REV C

4

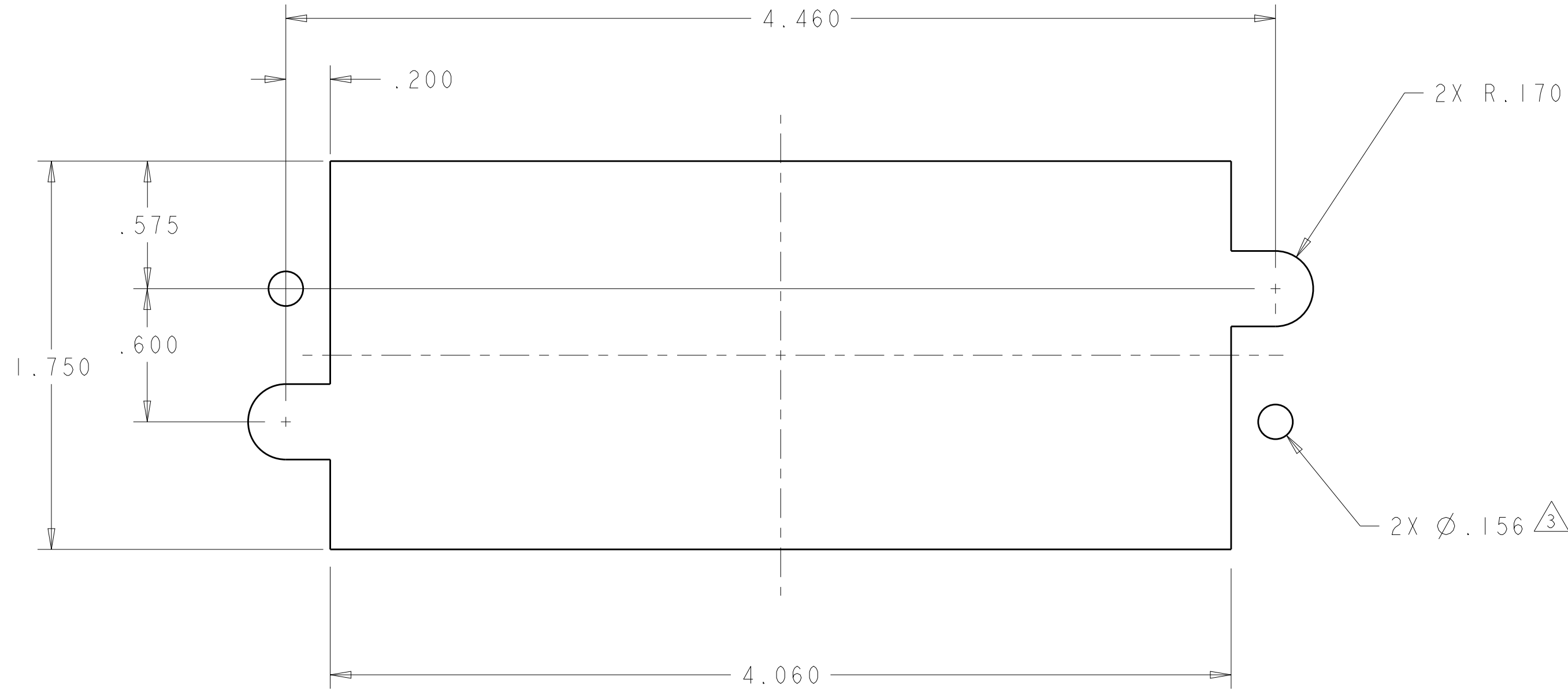
3

2


1

THIS DRAWING IS UNPUBLISHED. RELEASED FOR PUBLICATION 20
 © COPYRIGHT 20 BY - ALL RIGHTS RESERVED.

LOC	DIST	REVISIONS					
GP	00	P	LTR	DESCRIPTION	DATE	DWN	APVD
		-		SEE SHEET 1	-	-	-



SOCKET PANEL MOUNT CUTOUT
 COMPONENT SIDE

THIS DRAWING IS A CONTROLLED DOCUMENT.		DWN R. GRZYBOWSKI 26OCT2009	 TE Connectivity	
DIMENSIONS: INCHES		CHK D. ORRIS 26OCT2009		
TOLERANCES UNLESS OTHERWISE SPECIFIED:		APVD M. PERCHERKE 26OCT2009	NAME SOCKET CONNECTOR CRIMP CONTACTS W/ PANEL CUT-OUT, DOMINO	
0 PLC ± 1 PLC ± 2 PLC ±.02 3 PLC ±.010 4 PLC ± ANGLES ± FINISH		PRODUCT SPEC -	SIZE A200779	CAGE CODE C-2085271
MATERIAL -		APPLICATION SPEC -	DRAWING NO -	RESTRICTED TO -
-		WEIGHT -	SCALE 2:1 SHEET 2 OF 2 REV C	
-		CUSTOMER DRAWING		

单击下面可查看定价，库存，交付和生命周期等信息

[>>TE Connectivity\(泰科\)](#)