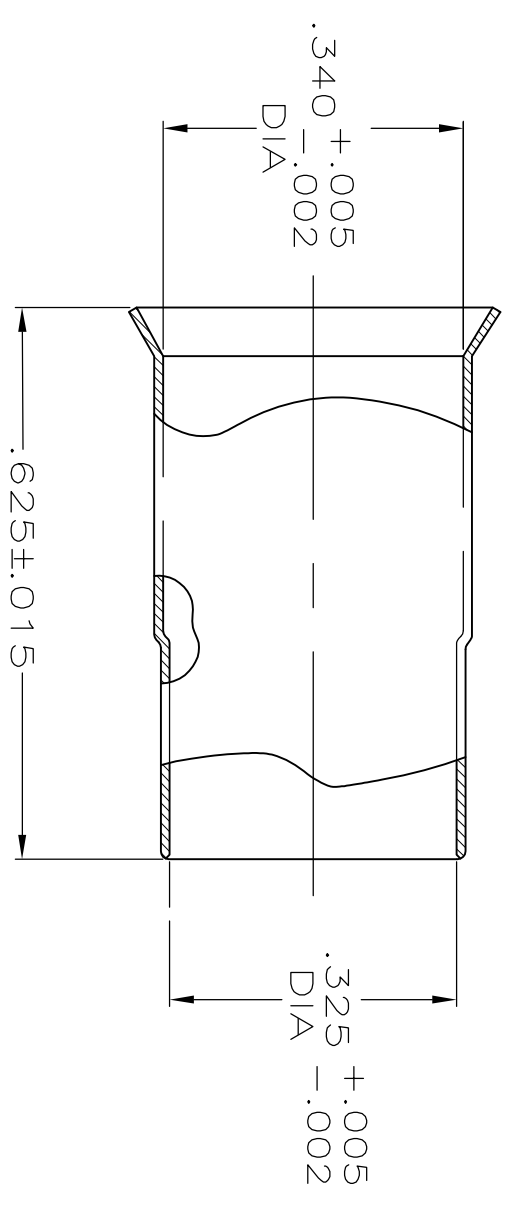


REVISIONS					
P	LTR	DESCRIPTION	DATE	DMN	APVD
G1		REVISED PER ECR-17-009545	04AUG2017	AS	RS



- 1 COPPER ALLOY.
- 2 TIN-LEAD PLATE PER ASTM-B-545, 2.54 μ m [.000100] MIN THICKNESS, WITH SUPPLEMENTAL ANTI FRETTING LUBRICANT.
- 3 TIN PLATE PER ASTM-B-545, 2.54 μ m [.000100] MIN THICKNESS, WITH SUPPLEMENTAL ANTI FRETTING LUBRICANT.

SUPERCEDED BY	FINISH	PART NUMBER
9-331256-0	3	9-331256-1
	3	9-331256-0
	-	1-331256-4
	1	1-331256-0
OBSOLETE	2	331256

THIS DRAWING IS A CONTROLLED DOCUMENT.

DMN M. SNEED 120CT182	24SEP82	TE Connectivity FERRULE, STEPDOWN
CHK D. SMITH	120CT182	
APVD M. SNEED		
PRODUCT SPEC		
APPLICATION SPEC		
WEIGHT 0.000000		
CUSTOMER DRAWING		

SIZE A3	CAGE CODE 00779	DRAWING NO 331256	RESTRICTED TO
SCALE 4:1			SHEET 1 of 1
			REV G1

单击下面可查看定价，库存，交付和生命周期等信息

[>>TE Connectivity\(泰科\)](#)