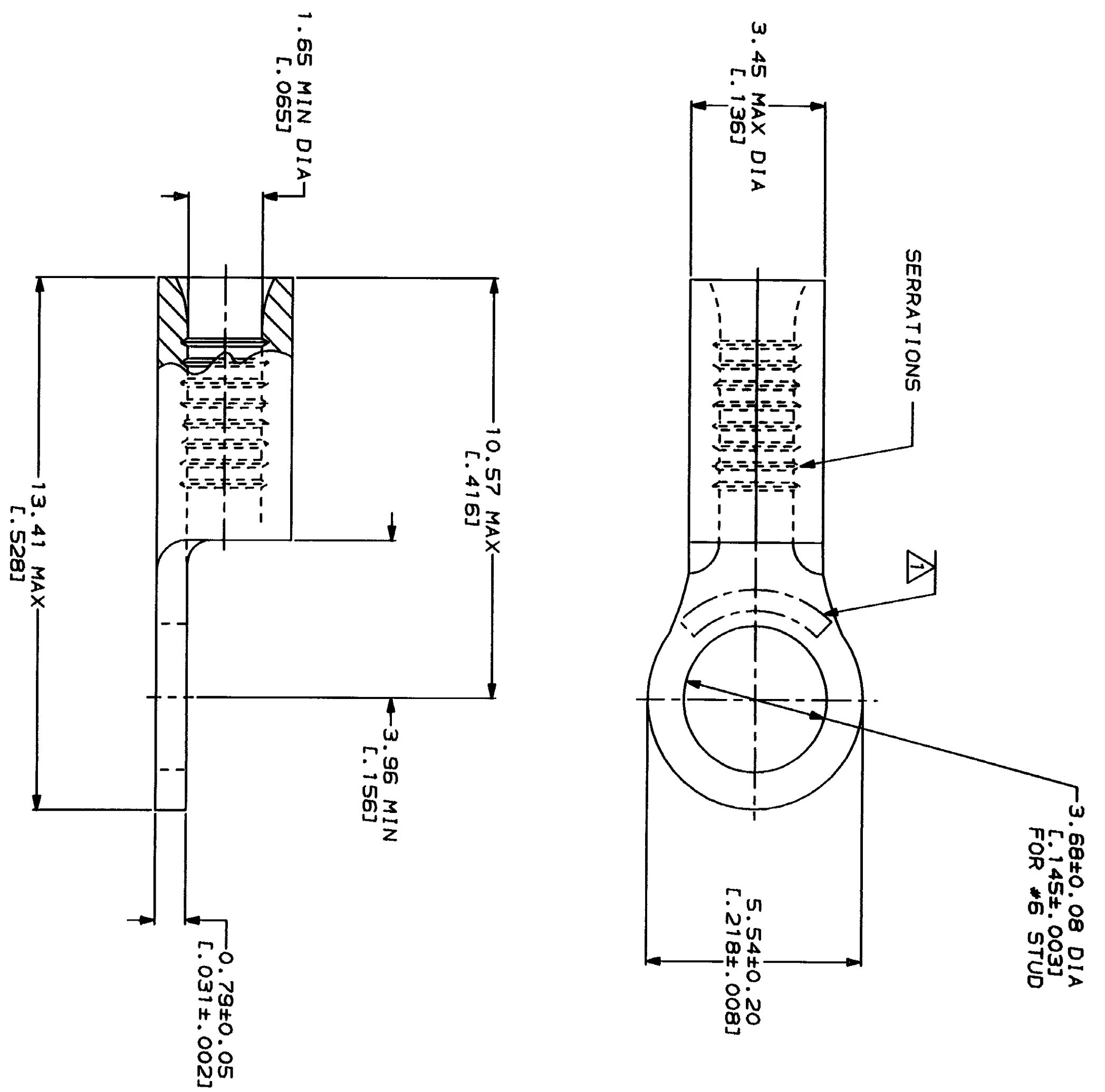


LOC	DIST	REV	ZONE	LTR	DESCRIPTION	DATE	APPD
G	14			C	REVISED PER 0720-0230-93	2/28/94	DAV

METPRIG
DIMENSIONS LISTED IN MM [INCHES]

AMP WIRE RANGE 22-16 AWG STRANDED	UL E13288 Listed 22-16 AWG STRANDED
LR7189 Certified	MILITARY P/N AND CLASS
NOT CERTIFIED	NOT APPLICABLE

STAMP AMP 22-18* APPROX AS SHOWN
22-16 TERMINALS ARE STAMPED 22-18 IN
ACCORDANCE WITH MILITARY SPECIFICATION
MIL-T-7928, COMMERCIAL WIRE RANGE IS 22-16



AMP INCORPORATED CUSTOMER SERVICE SYSTEMS		MAX RECOMMENDED OPERATING TEMPERATURE: 170°C MAX		DO NOT SCALE PRINT. UNLESS SPECIFIED DIMENSIONS IN—(INCHES)— TOLERANCES ON: 2 PLG DEC ± .005 3 PLG DEC ± .005 ANGLES PATERIAL		DR 2-3-93 TA BRINKMAN CHK 2-3-93 DA PATTERSON		NAME AMP AMP Incorporated Harrisburg, PA 17105-3508	
FOR ADDITIONAL PRODUCT INFORMATION OR COPIES OF DRAWINGS AND TECHNICAL DOCUMENTS 1-800-522-6752		VOLTAGE RATING: NOT APPLICABLE		FINISH TIN PLATE 0.00254L.0001001 MIN THK PER MIL-T-10727		APPD 2-3-93 DE MILLER		TERMINAL, RING TONGUE, BUDGET	
FOR APPLICATION TOOLING INFORMATION 1-800-722-1111		WIRE CROSS SECTIONAL AREA RANGE: 0.26-1.65mm² [509-3,260] CIR MILS STRANDED		APPLICATION SPEC		APPD 2-3-93 JL NECKLEY		SIZE 00779	
FOR ORDER ENTRY 1-800-526-5142		THIS DRAWING IS A CONTROLLED DOCUMENT FOR AMP INCORPORATED. IT IS SUBJECT TO CHANGE WITHOUT NOTICE. THE LATEST REVISION SHOULD BE CONSULTED FOR THE LATEST REVISION.		WEIGHT		SCALE 10:1		DRAWING NO 31101	

单击下面可查看定价，库存，交付和生命周期等信息

[>>TE Connectivity\(泰科\)](#)