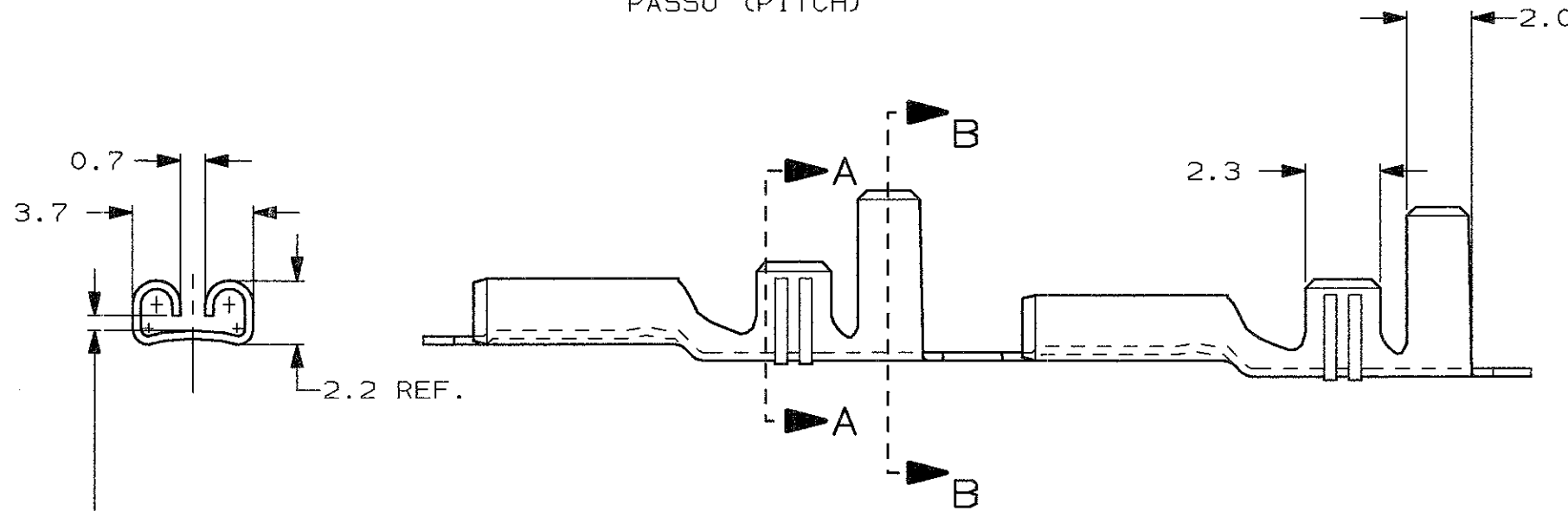
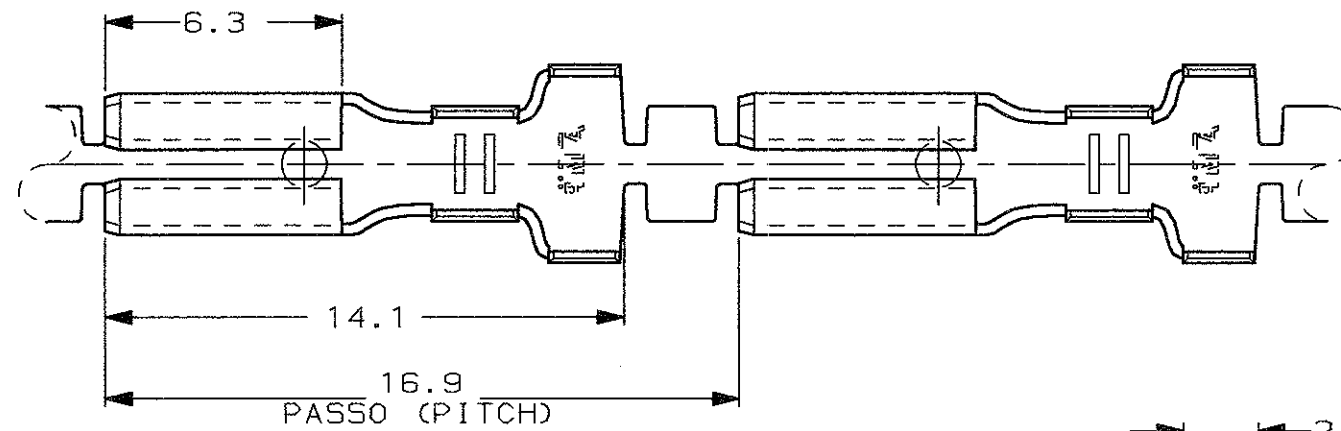


SCALA NON IMPEGNATIVA
(DO NOT SCALE)
DIMENSIONI IN
(DIMENSIONS IN) mm

METRIC

THIRD ANGLE
PROJECTION



ADATTO PER LINGUETTA
DI 0.8 mm.
(TO FIT TAB 0.8 mm.)

1) STATO DI FORNITURA - SCALA 1:1
(SUPPLY CONDITION - SCALE 1:1)

16.9
PITCH



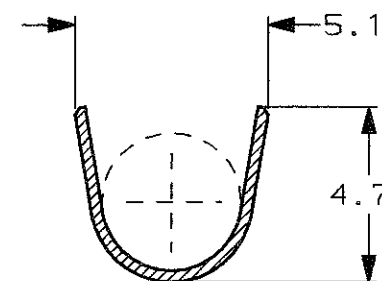
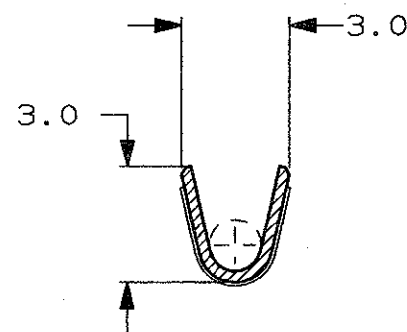
SENSO DI USCITA
DEL TERMINALE
DALLA BOBINA
(DIRECTION OFF
TOP OF REEL)

2) SPECIFICA DI PRODOTTO 108-20019
(PRODUCT SPEC. 108-20019)

3) PER LE VERSIONI IN PEZZI SCIOLTI
VEDERE DISEGNO 181551
(FOR LOOSE PIECE VERSION SEE DRAWING 181551).

SEZIONE A-A
(SECTION A-A)

SEZIONE B-B
(SECTION B-B)



	STAGNATO (TIN PLATED)	OTTONE (BRASS)	180457-2	AH
NOTE	FINITURA / COLORE (FINISH / COLOUR)	MATERIALE (MATERIAL)	NUMERO (AMP P/N)	REV.
CUSTOMER DWG. FOR REFERENCE ONLY		DISEGNO PER CLIENTE SOLO PER RIFERIMENTO		
THIS DRAWING IS UNPUBLISHED		RELEASE FOR PUBLICATION		19
© COPYRIGHT 19 BY AMP INCORPORATED, HARRISBURG, PA. ALL INTERNATIONAL RIGHT RESERVED. AMP PRODUCTS MAY BE COVERED BY U.S. AND FOREIGN PATENT AND/OR PATENT PENDING				
TOLLERANZE: SE NON DIVERSAMENTE SPECIFICATO (TOLERANCES: UNLESS OTHERWISE SPECIFIED)		DIAM. ISOLANTE (INS. DIA. RANGE)	RANGO FILO (WIRE RANGE) mm ²	SCALA (SCALE)
±0.4		1.5-3.6	0.5-1.5	5:1
ANGOLI (ANGLES)		AMP ITALIA S.p.A. Corso F.lli Cervi, 15 COLLEGNO (TORINO)		
± 2°		DESCRIZIONE (DESCRIPTION) FASTON® Connector .110" sr. REC. CONTACT		
DIS. H. YAALI (DR.) 18 DEC 2000		LOC. SIZE NUMERO (DWG NO)		
CONT. C. TARTARI (CHK)		I A3 C-180457		REV. AH 1
REV. (REV. LTR.)	REVISION (REVISION RECORD)	H. Y. (DATE)	APP. (APP.)	FOGLIO (SHEET) DI (OF)

单击下面可查看定价，库存，交付和生命周期等信息

[>>TE Connectivity\(泰科\)](#)