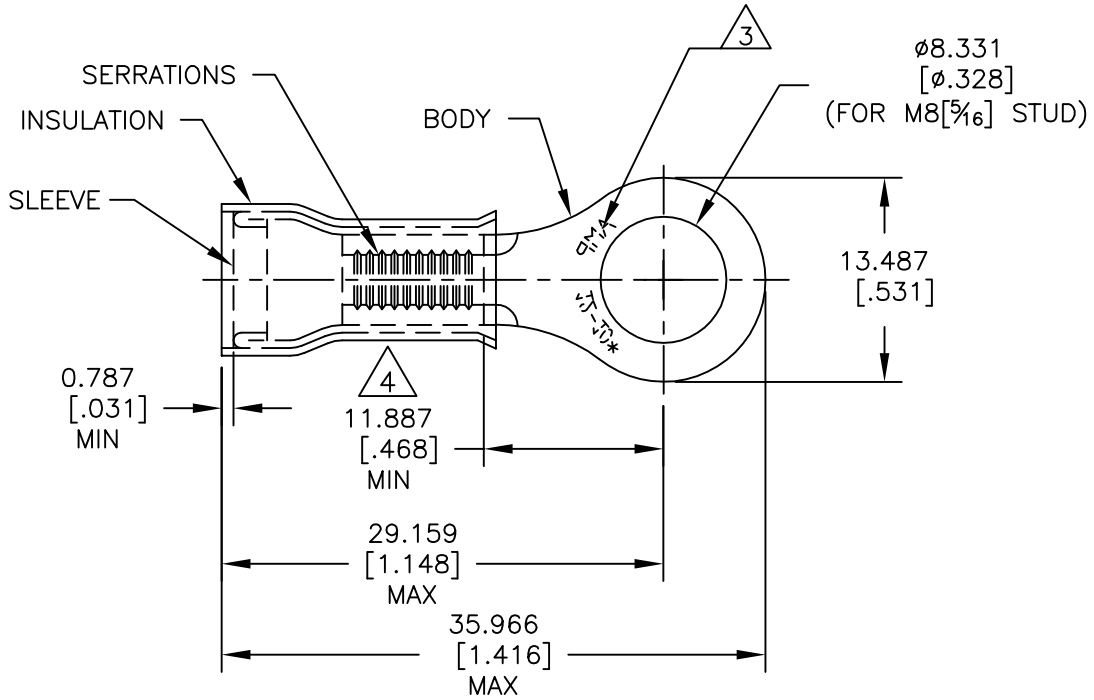


REVISIONS				
P	LTR	DESCRIPTION	DATE	APVD
	C1	REDRAWN PER ECO-17-007400	11DEC2017	RS DR

<b>AMP</b> WIRE RANGE	Listed FILE E13288	LR7189 Certified
12-10 AWG SOLID OR STRANDED	12-10 AWG SOLID OR STRANDED	12-10 AWG SOLID OR STRANDED



1 FOR  $\phi 4.318[\phi.170]$  TO  $\phi 7.620[\phi.300]$  WIRE INSULATION.

2 BODY MATERIAL THICKNESS:  $1.016 \pm 0.051[.040 \pm .002]$

STAMP AMP 12-10\* APPROX AS SHOWN.

APPLIES FROM EDGE OF METAL WIRE BARREL TO CENTER OF STUD HOLE.

MATERIAL:  
BODY & SLEEVE: COPPER PER ASTM B152  
INSULATION: PVC

FINISH:  
BODY & SLEEVE: TIN PLATE PER ASTM B545  
INSULATION: COLOR-YELLOW.

1500	ON TAPE	2-35346-1
500	LOOSE PIECE	35346
QTY.	PACKAGE TYPE	PART NUMBER

RELEASED FOR PUBLICATION

ALL RIGHTS RESERVED.

THIS DRAWING IS UNPUBLISHED.

COPYRIGHT - TE Connectivity

DIMENSIONS: mm [INCHES]	DWN RAVI S	11DEC2017	MATERIAL		FINISH	
	CHK ROHDE DANIEL F	11DEC2017	TE Connectivity NAME WIRE TERMINAL, P.I.D.G-RING TONGUE, WIRE SIZE: 12-10			
TOLERANCES UNLESS OTHERWISE SPECIFIED:	APVD ROHDE DANIEL F	11DEC2017				
0 PLC ± -	PRODUCT SPEC	UL 486 A-B				
1 PLC ± -	APPLICATION SPEC	114-2157	SIZE	CAGE CODE	DRAWING NO	RESTRICTED TO
2 PLC ± -	WEIGHT	-	A4	00779	35346	-
3 PLC ± 0.127[.005]	CUSTOMER DRAWING		SCALE	2:1	SHEET	1 OF 1
4 PLC ± -						REV
ANGLES ± -						C1

单击下面可查看定价，库存，交付和生命周期等信息

[>>TE Connectivity\(泰科\)](#)