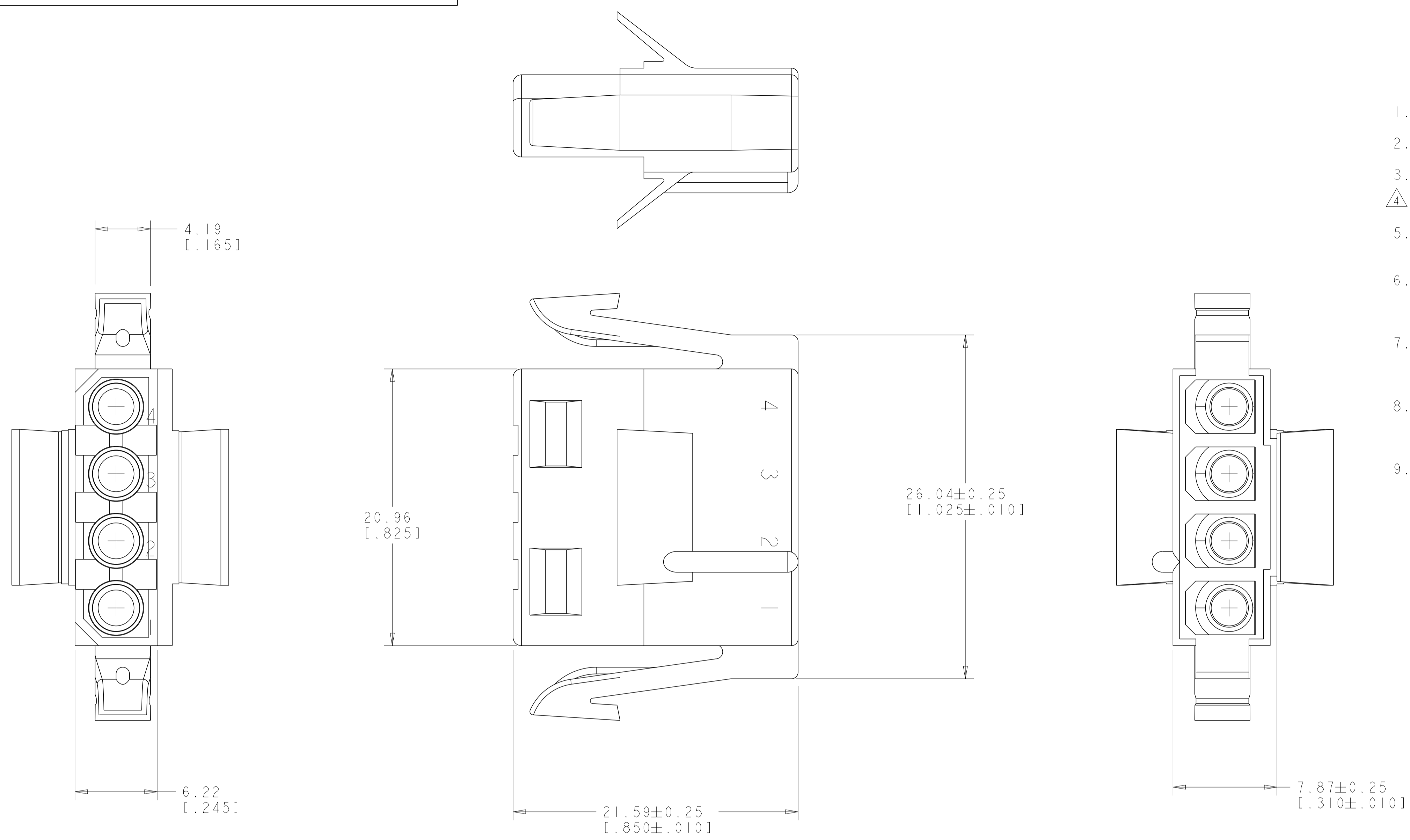
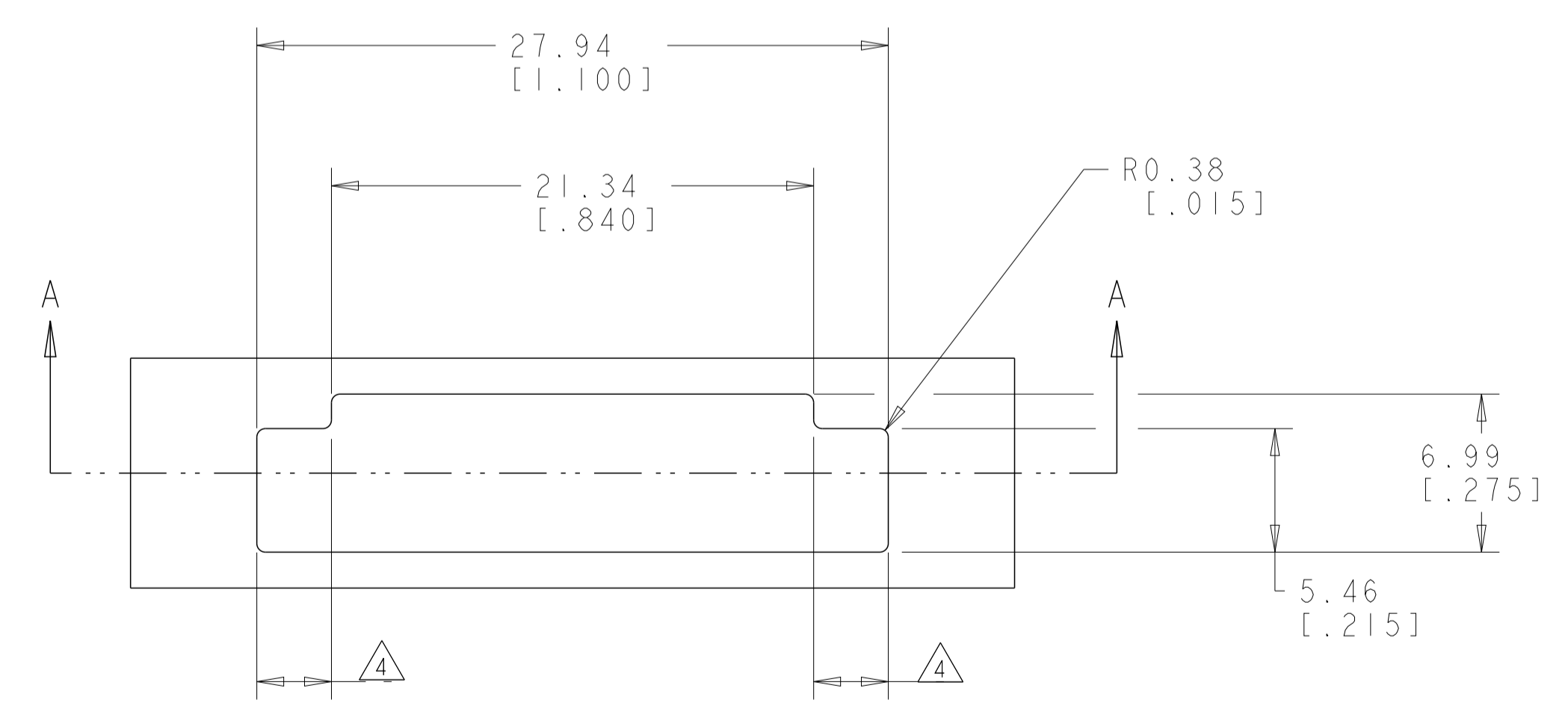


LOC	DIST	REVISIONS					
CM	00	P	LTN	DESCRIPTION	DATE	DWN	APVD
		R1		REVISED PER ECO-11-005294	06APR2011	RK	HMR
		R2		REVISED PER ECR-18-002474	20FEB2018	JB	DZ



1. THIS PLUG TO BE USED WITH CAP 480426.
2. TO BE USED WITH MATE-N-LOK SOCKETS.
3. RECOMMENDED PANEL THICKNESS 0.64 - 1.65 [.025 - .065].
- △ DIMENSIONS TO BE EQUAL WITHIN 0.13 [.005].
5. THE PANEL MUST BE PUNCHED SO THAT THE HOUSING ENTERS THE PANEL IN THE SAME DIRECTION AS THE PUNCH.
6. BOTH LOCKING LEGS ARE TO BE SQUEEZED TOGETHER AND HOUSING INSERTED "STRAIGHT IN" AS OPPOSED TO A ROCKING MANNER OF INSERTION.
7. PANEL MUST NOT HAVE ANY MATERIAL (PAINT, PORCELAIN, ETC.) APPLIED IN THE MOUNTING HOLE AREA THAT WOULD DECREASE RETENTION OF THE HOUSING IN THE PANEL.
8. IF NOTES 5 AND 7 ARE NOT COMPLIED WITH THE 27.94 [1.100] DIMENSION SHOULD BE REDUCED TO 27.43 [1.080] TO ASSURE PROPER RETENTION IN THE PANEL.
9. DIMENSIONS IN BRACKETS ARE IN INCHES.)



DIRECTION OF HOUSING AND PUNCH ENTRY

SECTION A-A

RECOMMENDED MOUNTING INFORMATION

SCALE 4:1

NATURAL	HI-TEMP NYLON	3-480425-0
NATURAL	NYLON	1-480425-0
COLOR	MATERIAL	PART NUMBER

THIS DRAWING IS A CONTROLLED DOCUMENT.

DWN: K. WHITAKER 05-OCT-2001
 CHK: D. COLEY 05-OCT-2001
 APVD: D. COLEY 05-OCT-2001

DIMENSIONS: mm [INCHES]

TOLERANCES UNLESS OTHERWISE SPECIFIED:

0 PLC	±
1 PLC	±
2 PLC	±0.13 [1.005]
3 PLC	±
4 PLC	±
ANGLES	±
FINISH	40° 30'

MATERIAL: SEE TABLE

APPLICATOR: D. COLEY

PRODUCT SPEC: APPLICATION SPEC

WEIGHT: -

CUSTOMER DRAWING

SCALE: 5:1

SHEET 1 OF 1

REV: R2

NAME: PLUG, 4 CIRCUIT, PANEL MOUNT, MATE-N-LOK™

SIZE: A100779

CAGE CODE: 480425

RESTRICTED TO: -

单击下面可查看定价，库存，交付和生命周期等信息

[>>TE Connectivity\(泰科\)](#)