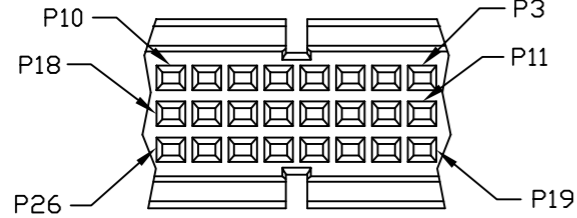
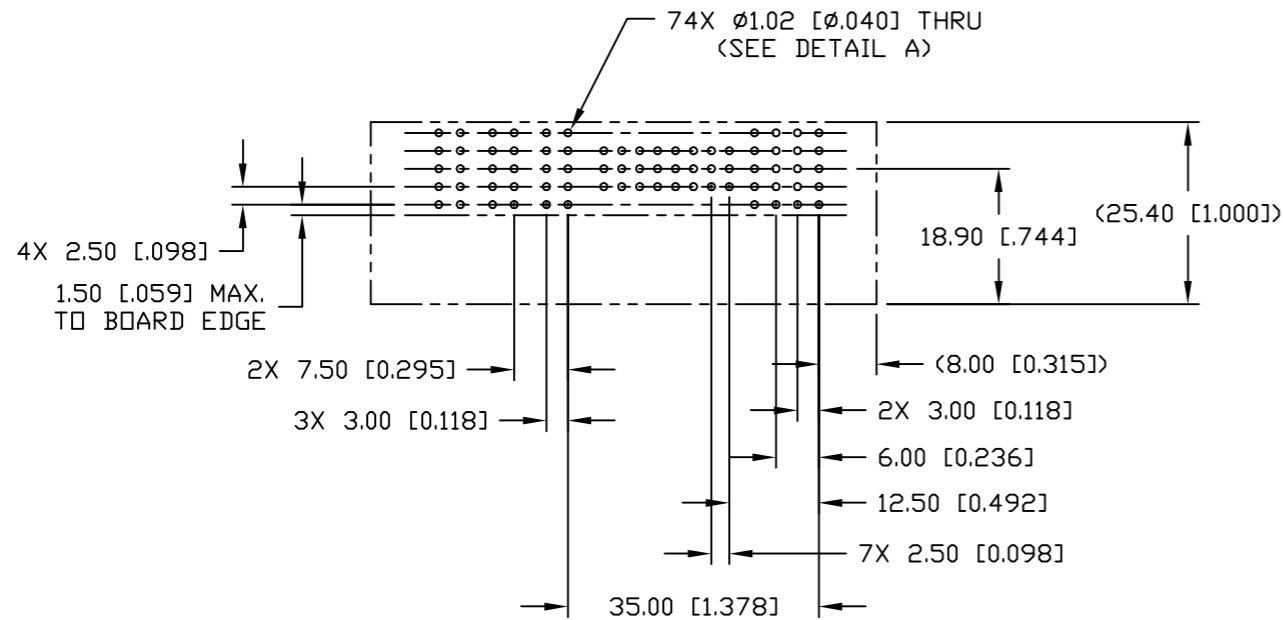
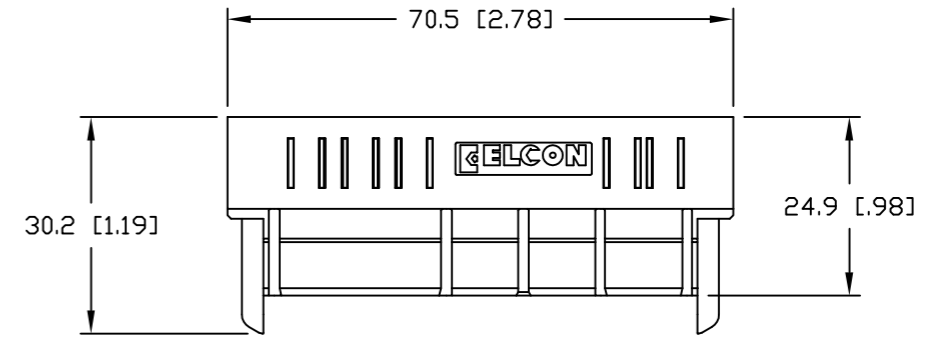
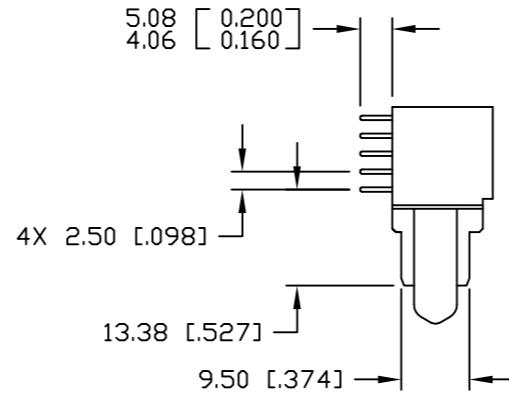


This drawing involves proprietary design rights of Tyco Electronics Corporation, and all design, manufacture, reproduction, use and sale rights regarding the same are expressly reserved. It is submitted for a specific purpose and the recipient by accepting this drawing, assumes custody and control and agrees to take reasonable precautions; (a) that this drawing will not be copied and reproduced, in whole or in part, or its contents revealed in any manner, or to any person except to meet the purpose for which it was delivered and (b) that any special features peculiar to this design will not be incorporated in other projects without the expressed written permission of Tyco Electronics Corporation.

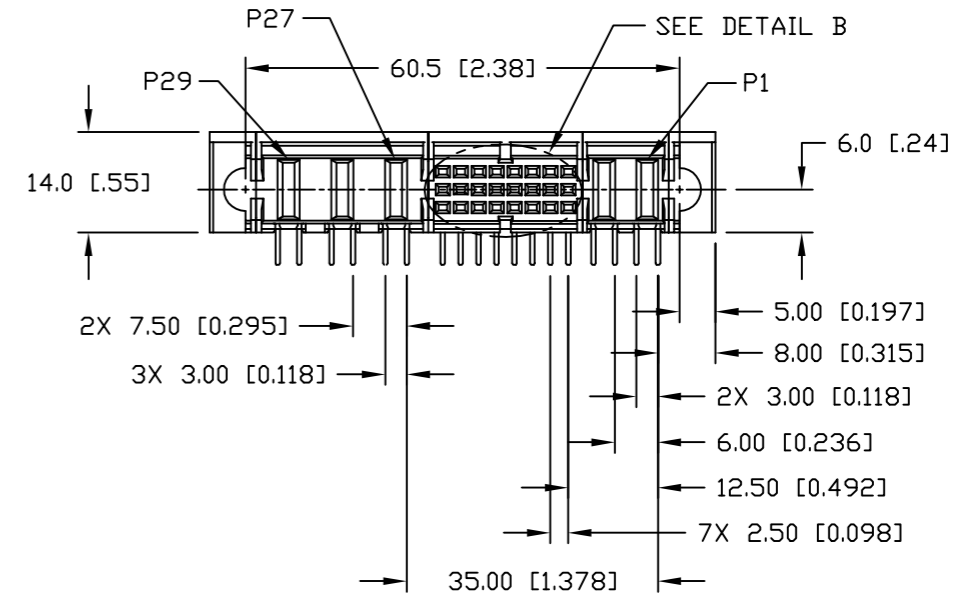
REVISIONS			
EC	REV	DESCRIPTION	DATE
		SEE SHEET 1	



DETAIL B



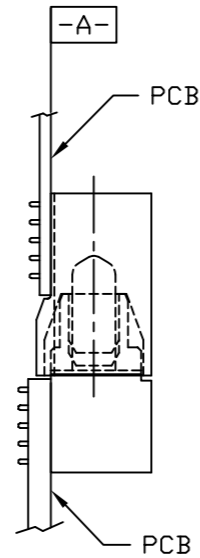
RECOMMENDED PC LAYOUT



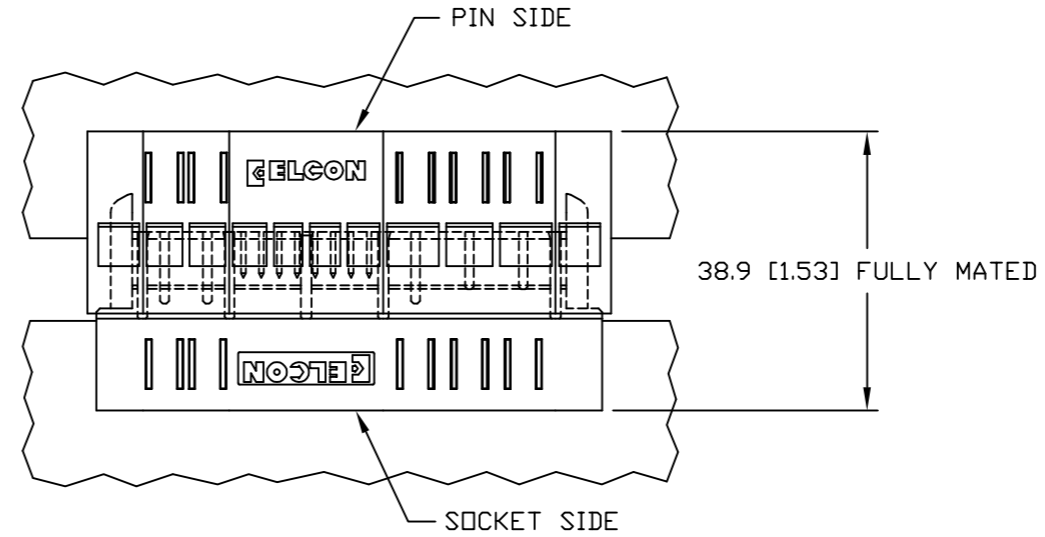
<p>THIRD ANGLE PROJECTION</p> <p>UNLESS OTHERWISE SPECIFIED DIMENSIONS ARE IN METRIC [INCHES]</p> <p>TOLERANCES</p> <p>ANGLES ± .5°</p> <p>DECIMALS</p> <p>.XX ± .25 [.010]</p> <p>.X ± .5 [.020]</p>	<p>MM OR MM [INCH]</p>	<p>DRAWN</p> <p>R. F. A.</p>	<p>DATE</p> <p>06/22/05</p>	<p>tyco Tyco Electronics Corporation</p> <p>Electronics Menlo Park, Ca 94025</p> <p>ELCON</p>	
	<p>CHECKED</p>	<p>APPROVED</p>	<p>APPROVED</p> <p>D. CHAU</p> <p>07/28/05</p>	<p>TITLE</p> <p>CONNECTOR, SOCKET, RIGHT ANGLE STANDARD SOLDER TAILS, MINIPAK PN 1766694-1</p>	
	<p>APPROVED</p> <p>M. ALIM</p> <p>07/28/05</p>	<p>APPROVED</p> <p>DCA APPROVED</p>	<p>DATE</p> <p>07/28/05</p>	<p>SIZE</p> <p>B</p>	<p>DWG NUMBER</p> <p>C = 1766694</p>
	<p>ACAD FILE NUMBER</p> <p>C1766694A.DWG</p>	<p>DWG SCALE</p> <p>1 = 1</p>	<p>SH</p> <p>2 OF 3</p>	<p>REV.</p> <p>A</p>	

This drawing involves proprietary design rights of Tyco Electronics Corporation, and all design, manufacture, reproduction, use and sale rights regarding the same are expressly reserved. It is submitted for a specific purpose and the recipient by accepting this drawing, assumes custody and control and agrees to take reasonable precautions; (a) that this drawing will not be copied and reproduced, in whole or in part, or its contents revealed in any manner, or to any person except to meet the purpose for which it was delivered and (b) that any special features peculiar to this design will not be incorporated in other projects without the expressed written permission of Tyco Electronics Corporation.

REVISIONS			
EC	REV	DESCRIPTION	DATE
		SEE SHEET 1	



NOTE: PRINTED CIRCUIT BOARDS ARE AT THE SAME DATUM A.



MATED CONDITION

DETAIL A

COMPLIANT TERMINATION AREA

RECOMMENDED PRINTED CIRCUIT HOLE FOR COMPLIANT PRESS FIT

FINISHED HOLE: $\phi 1.02$ [.040] $\pm .08$ [.003]

DRILLED HOLE: $\phi 1.15$ [.0453] $\pm .013$ [.0005]

COPPER PLATE: .025 [.0010] MINIMUM (PER SURFACE)

TIN PLATE: .008 [.0003] MINIMUM (PER SURFACE)

← MM OR MM [INCH] THIRD ANGLE PROJECTION UNLESS OTHERWISE SPECIFIED DIMENSIONS ARE IN METRIC [INCHES] TOLERANCES ANGLES $\pm .5^\circ$ DECIMALS .XX $\pm .25$ [.010] .X $\pm .5$ [.020]	DRAWN R. F. A.	DATE 06/22/05	 Tyco Electronics Corporation Menlo Park, Ca 94025 	
	CHECKED			TITLE
	APPROVED			USER INFORMATION AND MATED CONDITION PN 1766694-1
	APPROVED D. CHAU	07/28/05		SIZE DWG NUMBER REV. B C = 1766694 A
	DCA APPROVED M. ALIM	07/28/05		
	ACAD FILE NUMBER	C1766694A.DWG		
			DWG SCALE 1=1 SH 3 OF 3	

单击下面可查看定价，库存，交付和生命周期等信息

[>>TE Connectivity\(泰科\)](#)