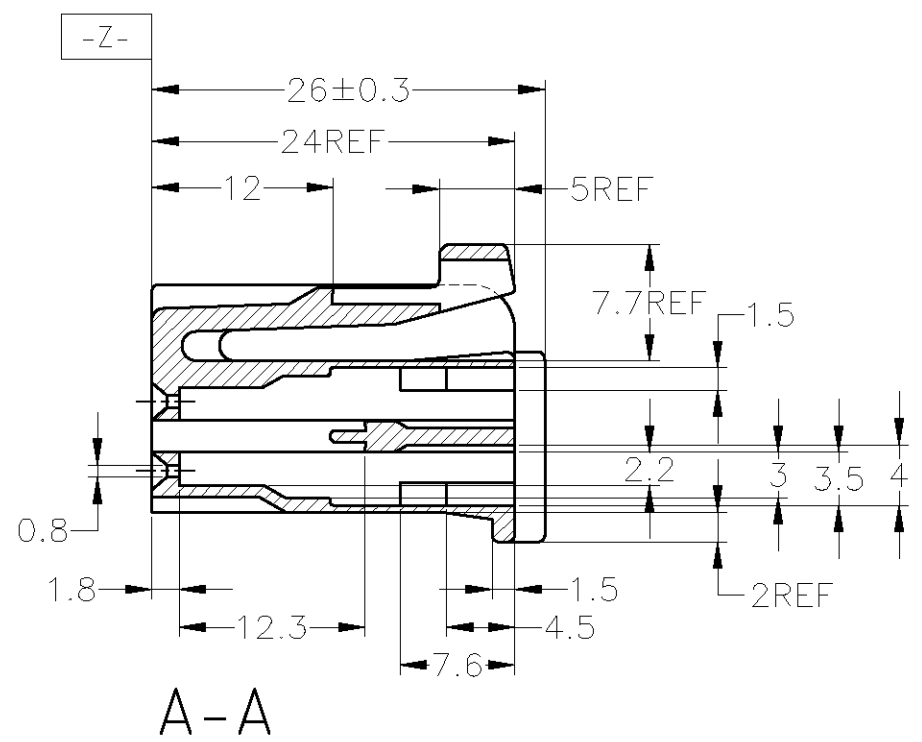
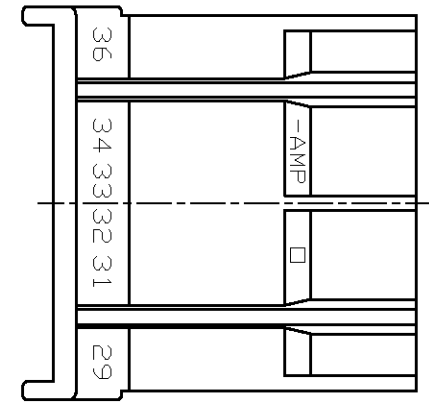
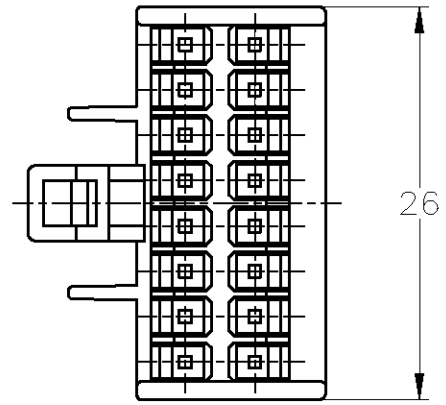
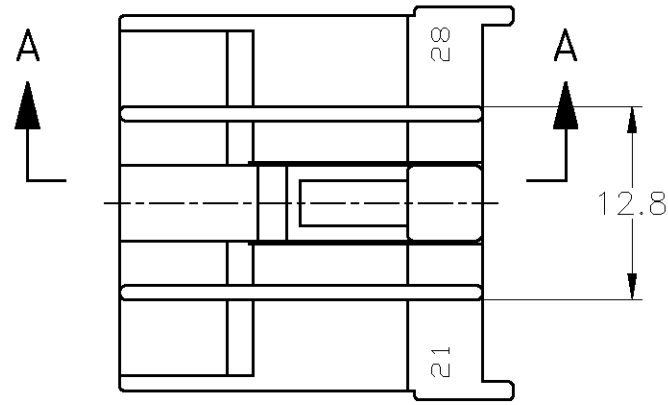
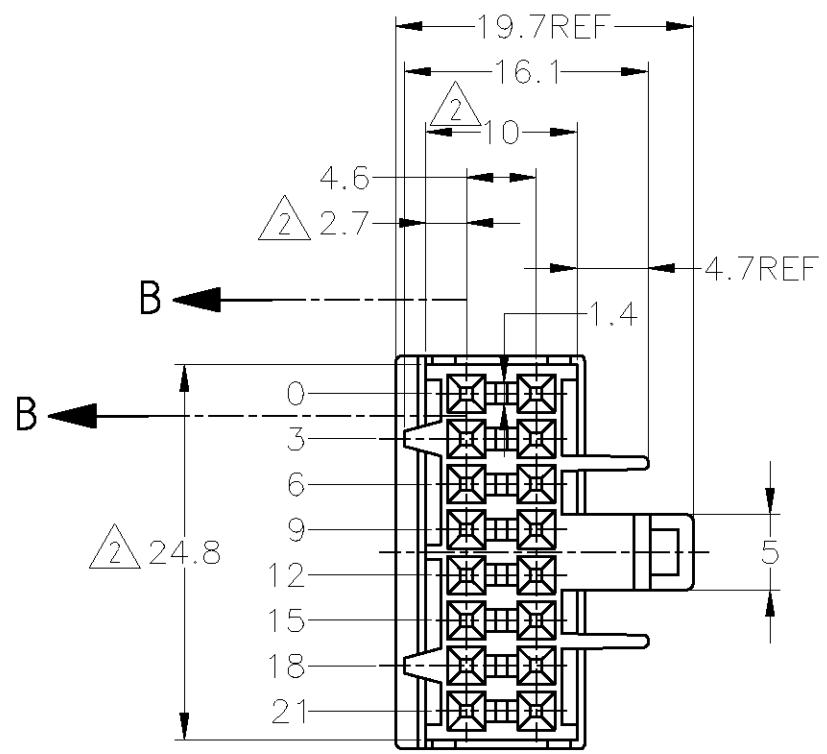
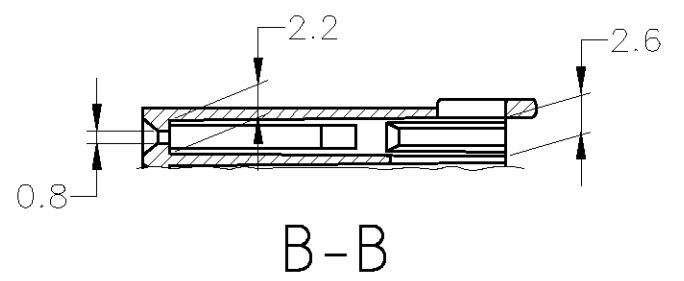


THIS DRAWING IS UNPUBLISHED. RELEASED FOR PUBLICATION  
 © COPYRIGHT BY TYCO ELECTRONICS CORPORATION. ALL INTERNATIONAL RIGHTS RESERVED.

| LOC | DIST | REVISIONS |                  |               |         |     |      |
|-----|------|-----------|------------------|---------------|---------|-----|------|
|     |      | P         | LTR              | DESCRIPTION   | DATE    | DWN | APVD |
| J   | -    | A2        | REDRAWN W/CHANGE | ECR-10-000666 | 12JAN09 | TS  | KB   |



- 1. 適合ロッキングプレート型番 172853 (2ヶ)
- 2. [-Z-] 面より2mmの範囲で測定
- 1. PART NUMBER OF SECONDARY LOCKING PLATE 172853 (2 REQUIRED)
- 2. THESE DIMENSIONS TO BE MEASURED BETWEEN [-Z-] AND 2



|       |             |
|-------|-------------|
| BLACK | 172852-2    |
| COLOR | PART NUMBER |

|  |  |                         |  |                 |
|--|--|-------------------------|--|-----------------|
| THIS DRAWING IS A CONTROLLED DOCUMENT.   |  | DWN T.SHINOHARA 15APR09 | Tyco Electronics Corporation<br>Kawasaki, Japan              |                 |
| DIMENSIONS: mm   |  | CHK K.BETSUI 15APR09    | NAME   |                 |
| TOLERANCES UNLESS OTHERWISE SPECIFIED:   |  | APVD K.BETSUI 15APR09   | PRODUCT SPEC   |                 |
| 0 PLC ± -<br>1 PLC ± -<br>2 PLC ± -<br>3 PLC ± -<br>4 PLC ± -<br>ANGLES ± -                      |  | PRODUCT SPEC 108-5124   | PLUG HOUSING 16POSITION<br>DLI CONNECTOR SECONDARY LOCK TYPE |                 |
| MATERIAL 66 NYLON  |  | FINISH -                | SIZE A3  | CAGE CODE 00779 |
| 一般公差 (GENERAL TOLERANCE)<br>10 ≥ ; ±0.2<br>30 ≥ > 10 ; ±0.25<br>100 ≥ > 30 ; ±0.3<br>ANGLE ; ±3° |  | DRAWING NO C-172852     |  | RESTRICTED TO - |
| CUSTOMER DRAWING   |  | SCALE 2:1               |  | SHEET 1 OF 1    |
|  |  |                         |  | REV A2          |

单击下面可查看定价，库存，交付和生命周期等信息

[>>TE Connectivity\(泰科\)](#)