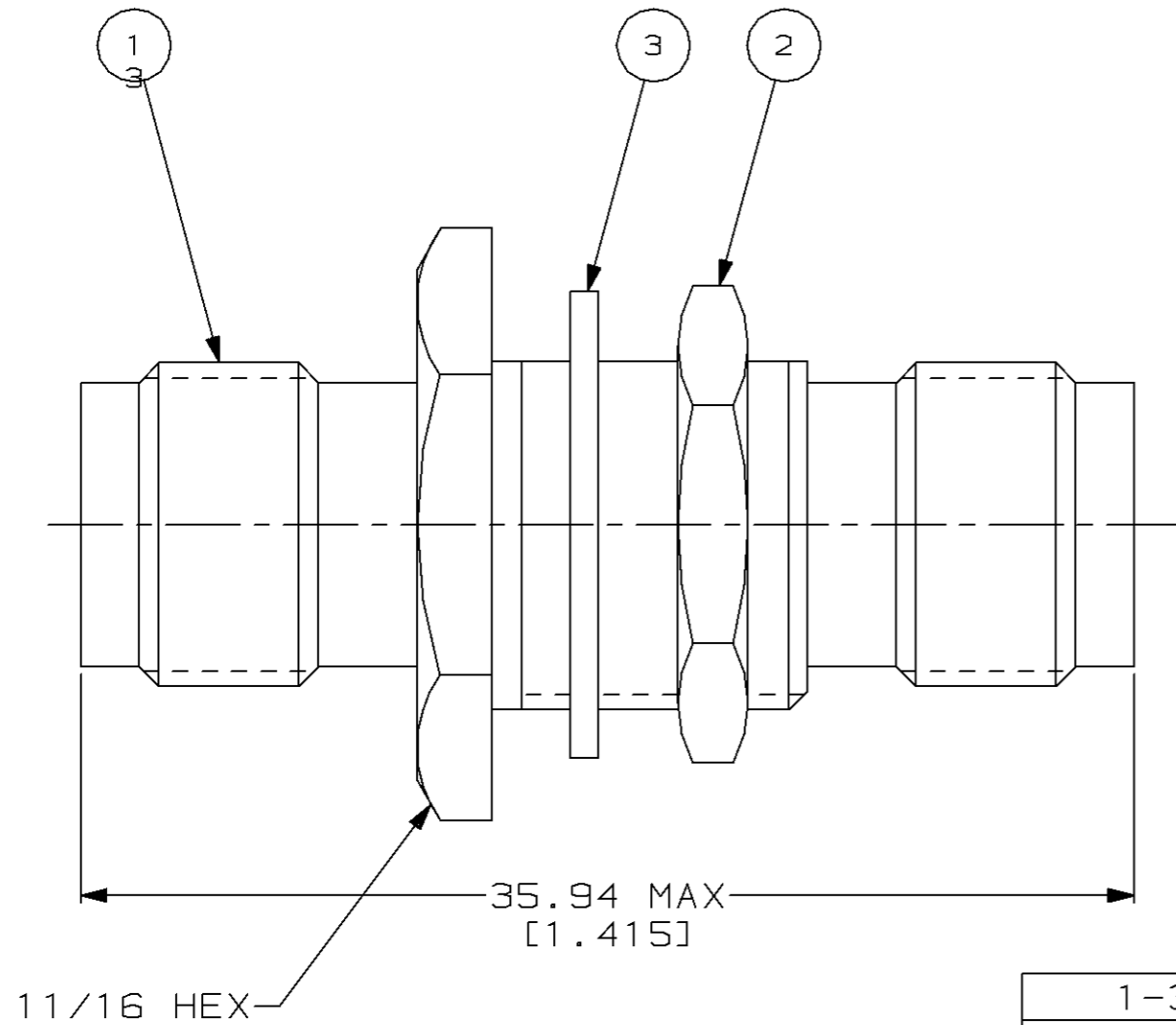
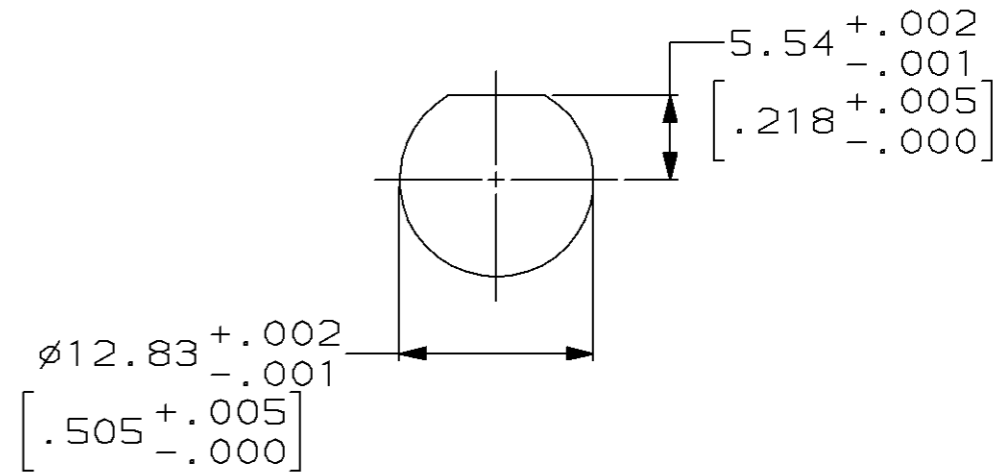


THIS DRAWING IS UNPUBLISHED. RELEASED FOR PUBLICATION, 19  
 © COPYRIGHT 19 BY AMP INCORPORATED. ALL INTERNATIONAL RIGHTS RESERVED.

LOC	DIST	P	F	REVISIONS				
				ZONE	LTR	DESCRIPTION	DATE	APPD
AJ	16				0	RELEASE -1 PER 92-3140-011-001	11/OCT/93	MEC



1. 6.35 [.250] MAX PANEL THICKNESS



RECOMMENDED PANEL CUTOUT  
 SCALE 2:1

1-329632-2	1-329631-2	414653-1	414396-1
③ LOCK WASHER QTY = 1	② JAM NUT QTY = 1	① JACK-JACK ASSEMBLY QTY = 1	PART NUMBER

DO NOT SCALE PRINT. UNLESS SPECIFIED DIMENSIONS IN mm [INCHES]		PART NO	
TOLERANCES ON: 2 PLC DEC ± - 3 PLC DEC ± - ANGLES ± -		AMP Incorporated Harrisburg, PA 17105-3608	
MATERIAL	DR 11/OCT/93 M.E. COWHER	NAME	
	CHK 12/OCT/93 M. PHILLIPS	JACK-JACK ADAPTOR, BHD, 75 OHM, COML TNC	
	APPD 12/OCT/93 M. PHILLIPS	SIZE	CAGE CODE
	APPD 12/OCT/93 M.E. COWHER	B	00779
	PRODUCT SPEC	DRAWING NO	C=414396
FINISH	APPLICATION SPEC	SCALE	SHEET
		4:1	1 OF 1
	WEIGHT		

THIS DRAWING IS A CONTROLLED DOCUMENT FOR AMP INCORPORATED. IT IS SUBJECT TO CHANGE AND THE CONTROLLING ENGINEERING ORGANIZATION SHOULD BE CONTACTED FOR THE LATEST REVISION.

单击下面可查看定价，库存，交付和生命周期等信息

[>>TE Connectivity\(泰科\)](#)