

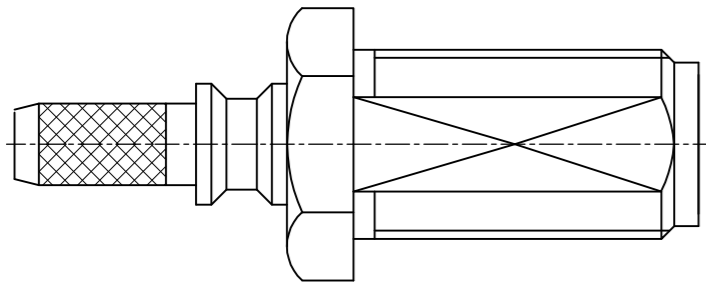


THIS DRAWING IS UNPUBLISHED. RELEASED FOR PUBLICATION APRIL , 2004.  
 © COPYRIGHT 2004 By - ALL RIGHTS RESERVED.

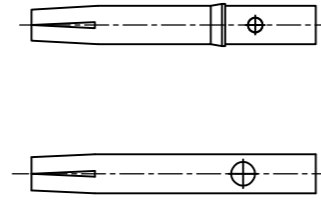
LOC		DIST		REVISIONS			
P	LTR	DESCRIPTION	DATE	DWN	APVD		
-	-	SEE SHEET 1	-	-	-		

COMPONENTS

MAIN BODY (ITEM 1,2)



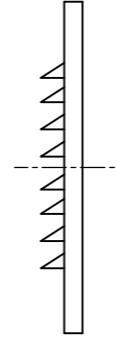
CENTRE SOCKET (ITEM 3,4)



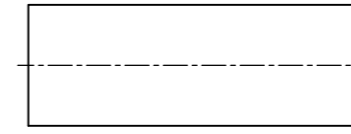
NEX NUT (ITEM 5)



LOCKWASHER (ITEM 6)



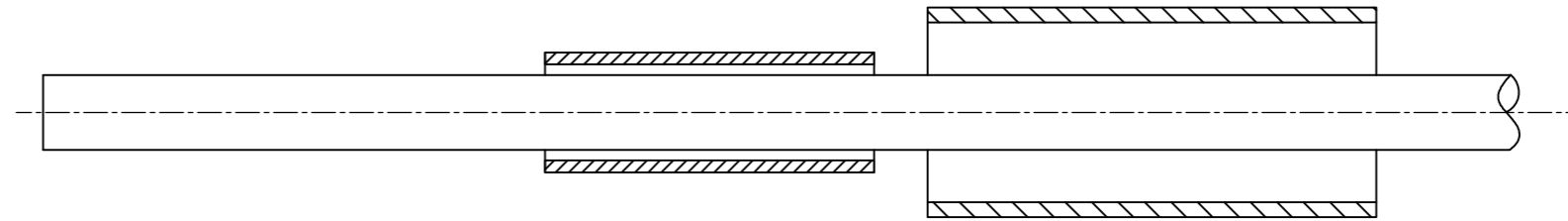
CRIMP FERRULE (ITEM 7)



ASSEMBLY INSTRUCTIONS  
 RG174A/U, 188A/U, 316/U, KX3B, KX22A, URM95

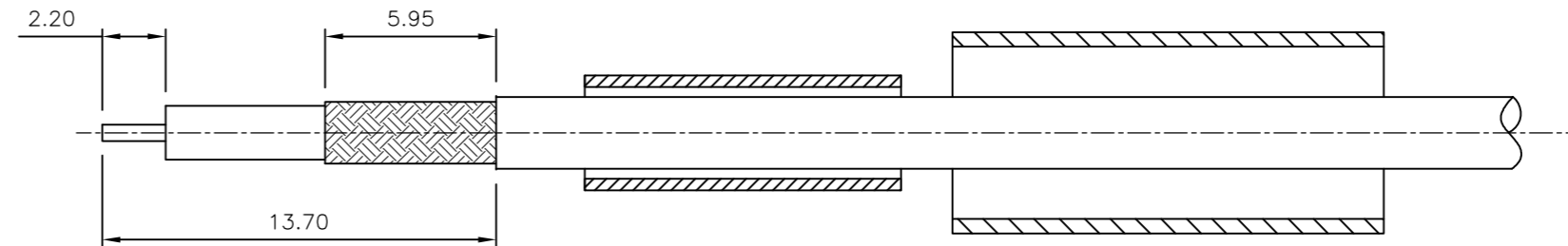
STEP 1

- IF USING HEATSHRINK SLIDE OVER CABLE (HEATSHRINK NOT SUPPLIED AND USED AT CUSTOMER DISCRETION)
- SLIDE METAL CRIMP FERRULE OVER CABLE



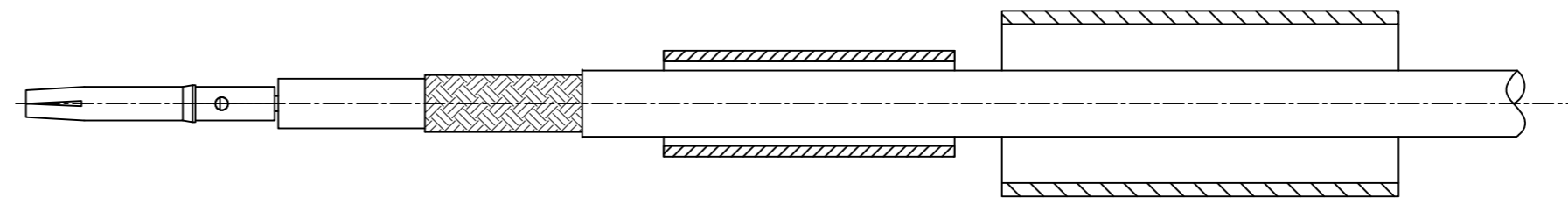
STEP 2

- STRIP CABLE TO DIMENSIONS AS SHOWN



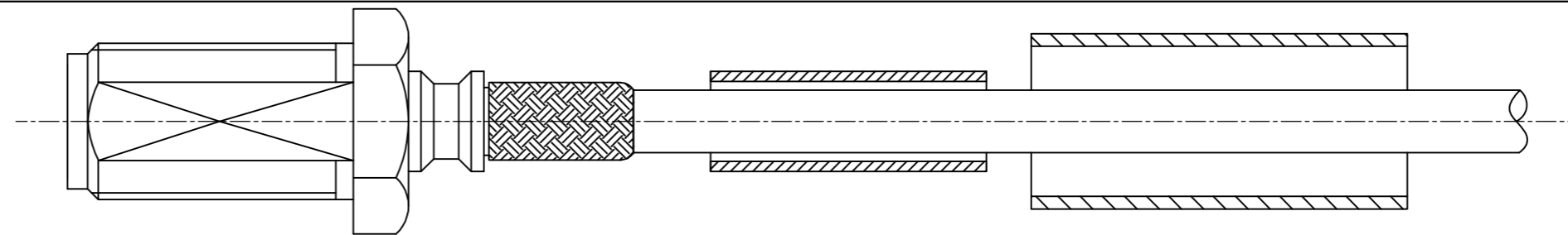
STEP 3

- TIN CENTRE CONTACT
- FIT CONTACT OVER CONDUCTOR
- SOLDER CONTACT (ITEM 3 OR 4 AS SUPPLIED) TO TINNED CENTRE CONDUCT, DO NOT OVER HEAT



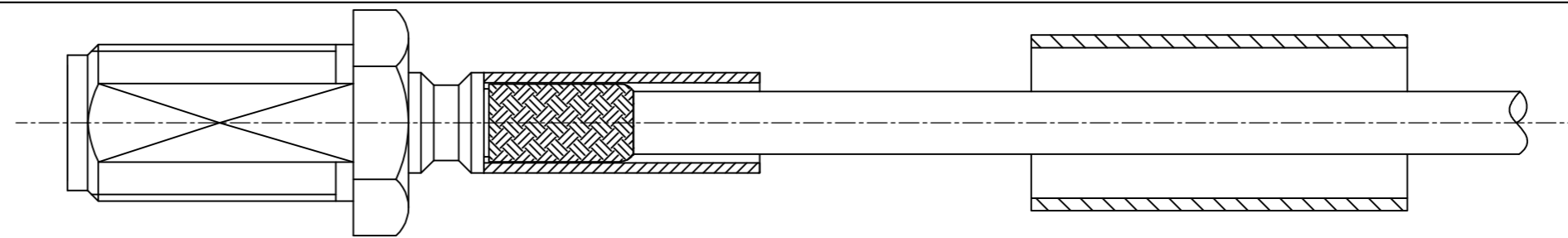
STEP 4

- PRESS SUB-ASSEMBLY INTO BODY UNTIL CONTACT IS FULLY LOCATED
- ENSURE THAT KNURLED HOUSING INSERTS BETWEEN THE DIELECTRIC AND CABLE BRAID

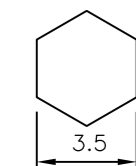


STEP 5

- SLIDE CRIMP FERRULE ALONG THE CABLE UNTIL IT BUTTS AGAINST THE BODY HOUSING
- CRIMP USING TOOL AS NOTED ON PAGE 1
- CRIMP DIMENSION AS SHOWN

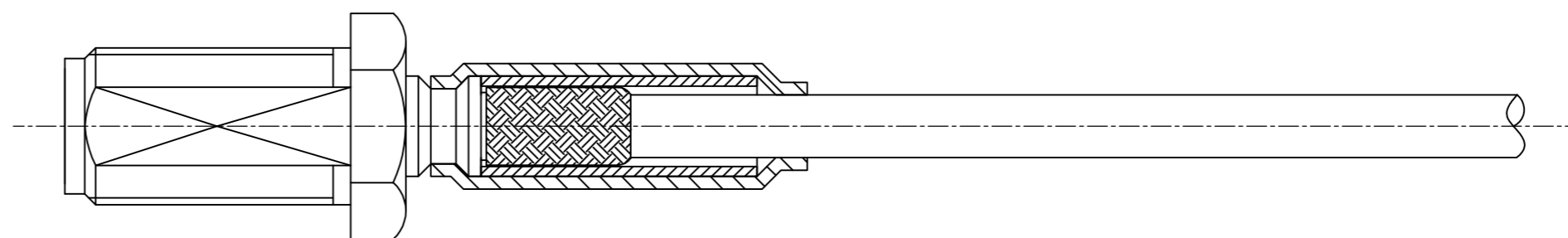
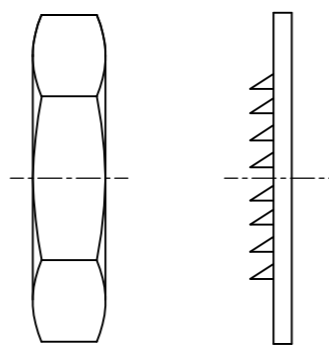


RECOMMENDED CRIMP SLEEVE A/F HEX

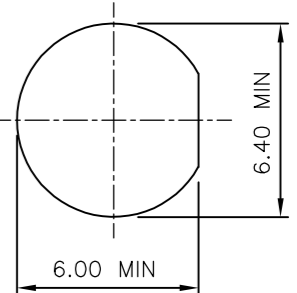


STEP 5

- IF USING HEATSHRINK PLACE OVER CONNECTOR AS SHOWN AND APPLY
- FOR BULKHEAD MOUNTING PREPARE HOLE AS SHOWN
- USE LOCKWASHER (ITEM 6) AND HEX NUT (ITEM 5) TO SECURE CONNECTOR



RECOMMENDED MOUNTING HOLE DIM'S



THIS DRAWING IS A CONTROLLED DOCUMENT.		DWN R.SMITH 05FEB04		
DIMENSIONS: mm		CHK S.PARLOW 05FEB04		
TOLERANCES UNLESS OTHERWISE SPECIFIED:		APVD F.WHEELER-KING 05FEB04	NAME	
0 PLC ± -		PRODUCT SPEC	SMA BULKHEAD JACK NON CAPTIVE SOLDER CONTACT CRIMP ATTACHMENT	
1 PLC ± -		108-3460	RG174A/U, 188A/U, 316/U, KX3B, KX22A, URM95	
2 PLC ± -		APPLICATION SPEC	SIZE A2	CAGE CODE 00779
3 PLC ± -		411-3276	DRAWING NO	RESTRICTED TO
4 PLC ± -		WEIGHT -	C=1478955	-
ANGLES ± -		CUSTOMER DRAWING	SCALE NTS	SHEET 2 OF 2
FINISH -			REV C1	

1478955

A

单击下面可查看定价，库存，交付和生命周期等信息

[>>TE Connectivity\(泰科\)](#)