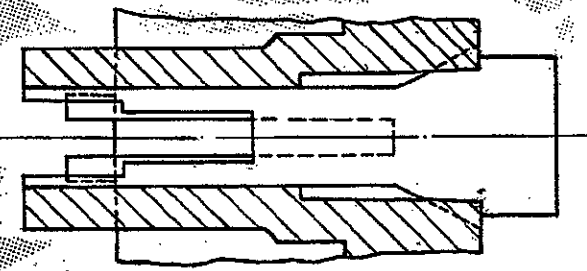
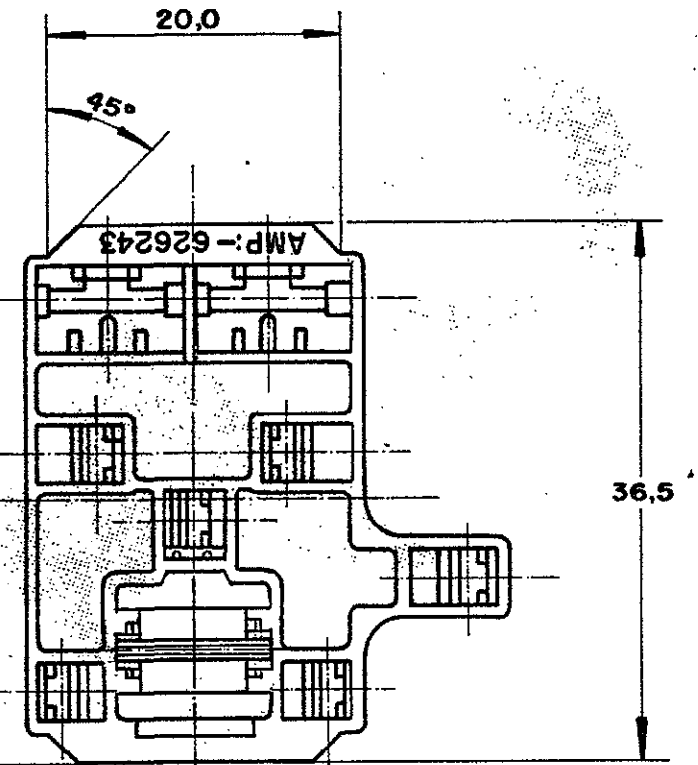
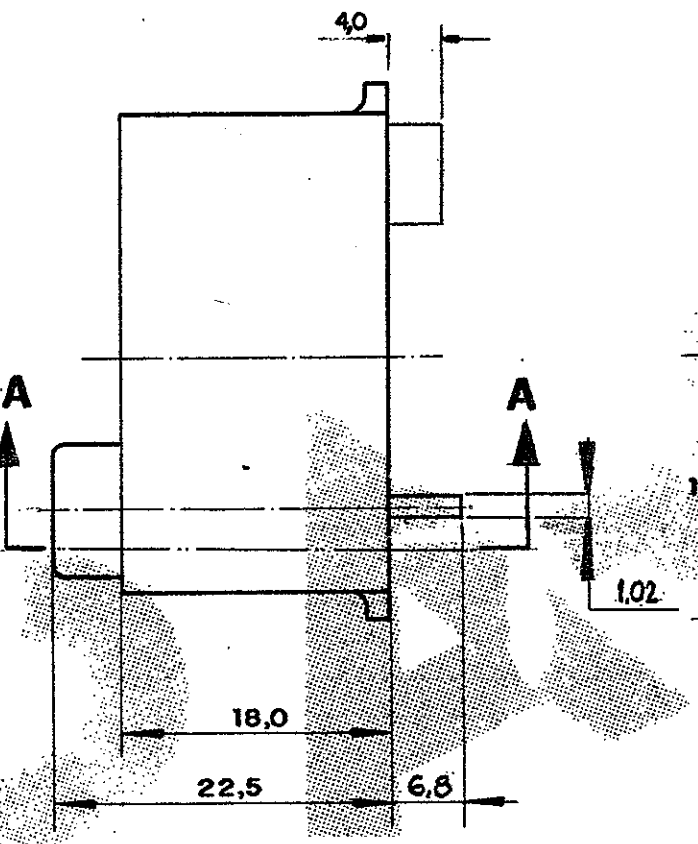
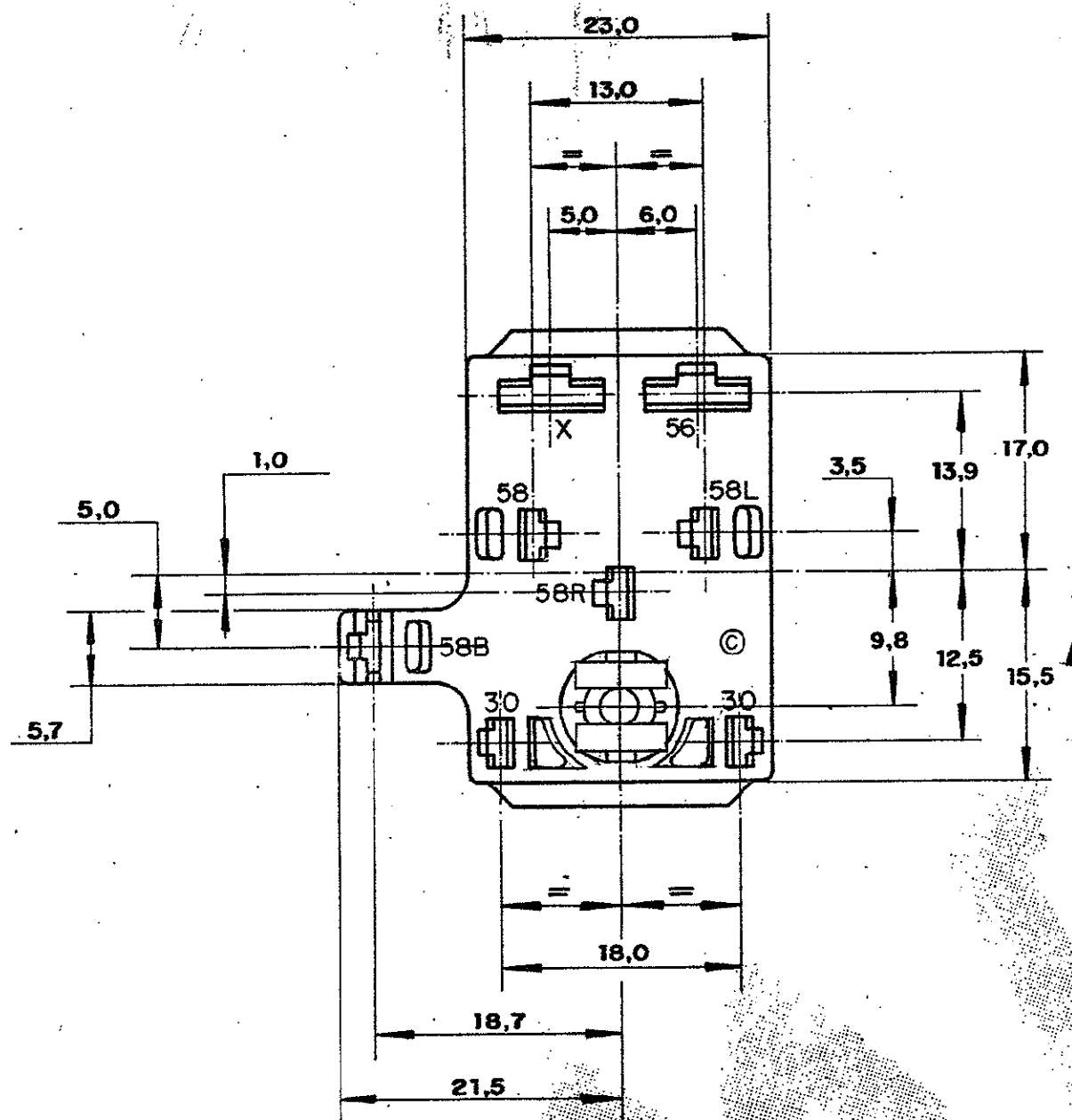


C 626243

DO NOT SCALE  
DIMENSIONS IN METRIC  
3rd ANGLE PROJECTION



SEÇÃO A-A

3  
OBSOLETE

- ① - SEE RESTRICTED CUSTOMER DRAWING NUMBER 626 243-1.
- ② - CONNECTOR FOR .250 F-F, .110 F-F TERMINALS AND SPECIAL CONTACT 735 280 / 444 150
- ③ - OBSOLETE PARTS: OBSOLETE CIS STREAMLINING PER D.RENAUD/D.SINISI

ITEM	FINISH	MATERIAL	DESCRIPTION	PART NUMBER
		NYLON 6.6	10WAY .110/.250 S. FASTIN- ON REC. HSG.	626 243 - 3
				626 243 - 2
				626 243 - 1

CUSTOMER DWG for REFERENCE ONLY				THIS DRAWING IS UNPUBLISHED RELEASED FOR PUBLICATION		
C4 REV PER ECO-09-026444				© COPYRIGHT 1984 BY AMP DO BRASIL LTDA S.P. ALL INTERNATIONAL RIGHTS RESERVED AMP PRODUCTS MAY BE COVERED BY U.S. AND FOREIGN PATENTS AND/OR PATENTS PENDING.		
C3 REVISED BY EC:022-98				TOLERANCES UNLESS OTHERWISE STATED		
C2 REVISED EC334/96				INS. DIA. RANGE		
C1 REVISED EC265/96				WIRE RANGE		
C REVISED				SCALE		
B RIVISED				AMP do BRASIL LTDA.		
A REVISED				São Paulo, Brasil		
185 REVISION RECORD				DESCRIPTION HOUSING, 10 POSN., COMBINED		
				AMP		
				DWG NO C 626243		
				SHEET 1 of 1		

单击下面可查看定价，库存，交付和生命周期等信息

[>>TE Connectivity\(泰科\)](#)