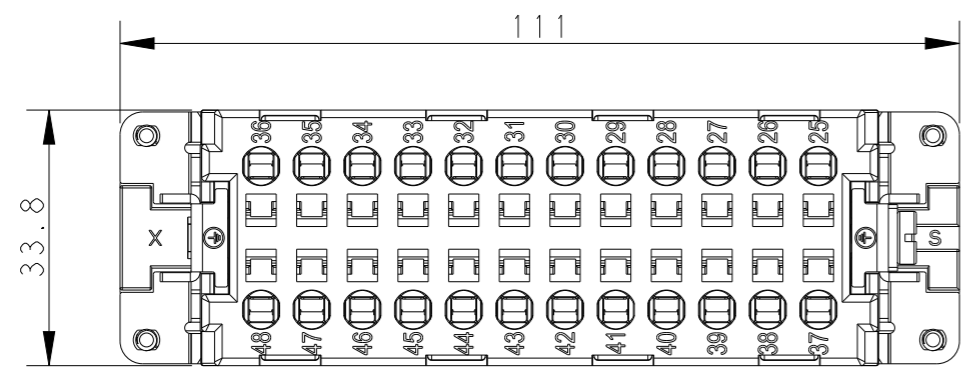


THIS DRAWING IS UNPUBLISHED. RELEASED FOR PUBLICATION 20
 © COPYRIGHT 20 BY - ALL RIGHTS RESERVED.

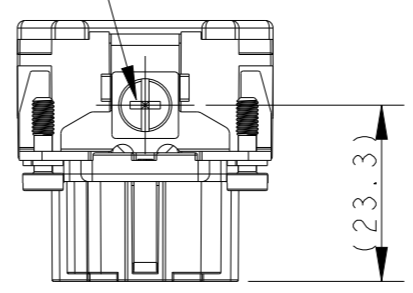
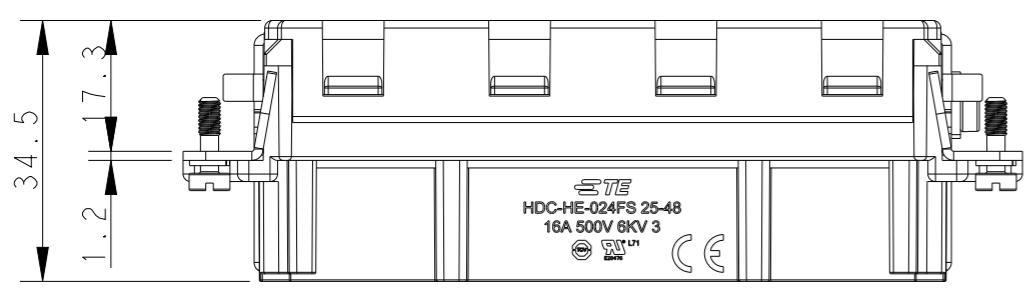
REVISIONS

P	LTR	DESCRIPTION	DATE	DWN	APVD
	A	INITIAL	07Jan2015	GY	CW
	B	ECR-15-013759	100c+2015	DW	CW
	C	ECR-21-106515	21JUL2021	SQ	CW



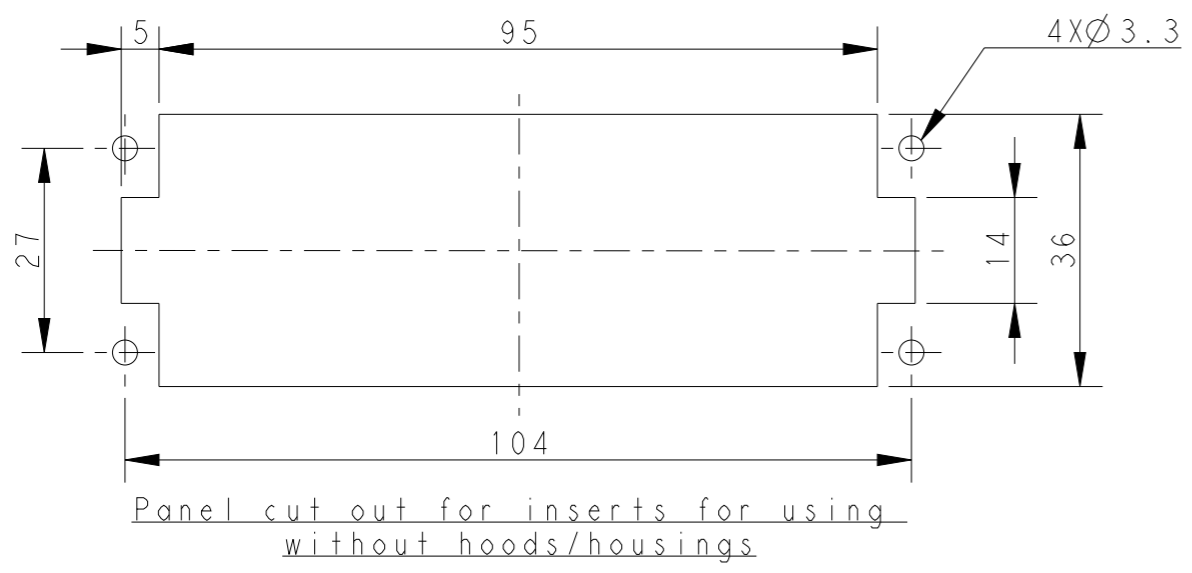
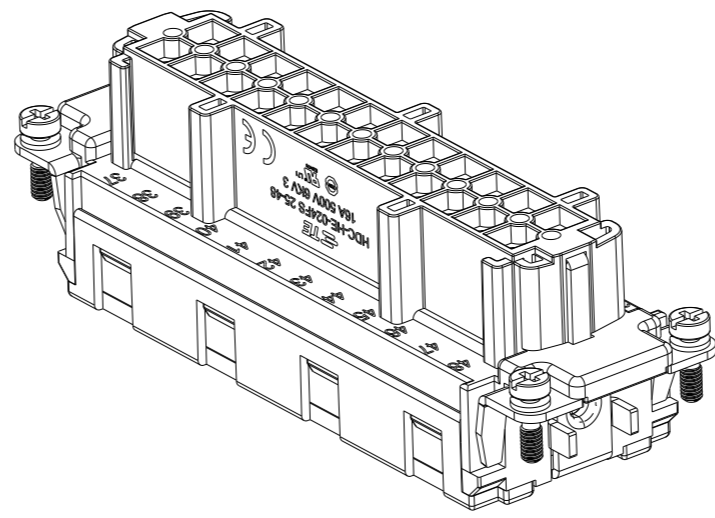
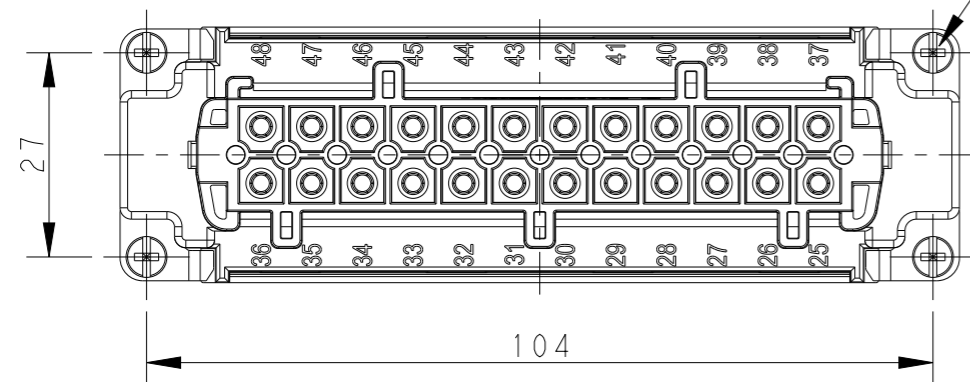
NOTES:
 1. TECHNICAL CHARACTERISTICS:
 INSULATION MATERIAL: PC
 RATED VOLTAGE: 500V
 RATED CURRENT: 16A
 INSULATION RESISTANCE: >=400MΩ
 RATED IMPULSE VOLTAGE: 6KV
 POLLUTION DEGREE: 3
 FLAMMABILITY: UL94V-0
 MATING CYCLES: 500 CYCLES
 OPERATION TEMPERATURE: -40°C~+125°C
 WIRE RANGE: 0.5mm²~2.5mm² (AWG20-AWG14)
 CONTACT TYPE: SPRING CLAMP

M4 screw, recommended tightening torque 1.2Nm




4 X M3 screw, recommended tightening torque 0.5Nm

注释:
 1. 技术参数:
 绝缘材料: PC
 额定电压: 500V
 额定电流: 16A
 绝缘电阻: >=400MΩ
 脉冲电压: 6KV
 污染等级: 3
 阻燃等级: UL94V-0
 插拔次数: 500 次
 工作温度: -40°C~+125°C
 接线范围: 0.5mm²~2.5mm² (AWG20-AWG14)
 接线类型: 弹片压接



HE-024-FS 25-48	T2040483201-000
DESCRIPTION	PART NUMBER

THIS DRAWING IS A CONTROLLED DOCUMENT.		DWN	Gino.Yao	05Jan2015	 TE Connectivity NAME HE-024-FS 25-48	
DIMENSIONS: mm		CHK	Chris.Wang	05Jan2015		
TOLERANCES UNLESS OTHERWISE SPECIFIED:		APVD	Xiang.Xu	05Jan2015		
0 PLC ±- 1 PLC ±- 2 PLC ±- 3 PLC ±- 4 PLC ±- ANGLES ±-		PRODUCT SPEC	108-137044			
MATERIAL		APPLICATION SPEC	114-137044		SIZE	A3
		WEIGHT	-		CAGE CODE	00779
		CUSTOMER DRAWING			DRAWING NO	T2040483201000
					RESTRICTED TO	-
					SCALE	1:1
					SHEET	1 OF 1
					REV	C

单击下面可查看定价，库存，交付和生命周期等信息

[>>TE Connectivity\(泰科\)](#)