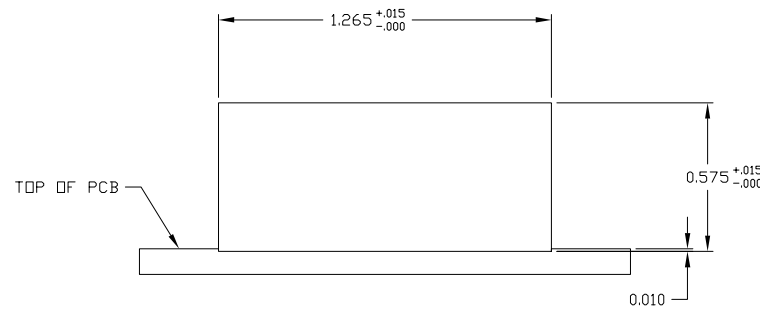
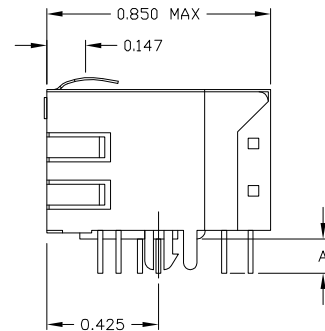
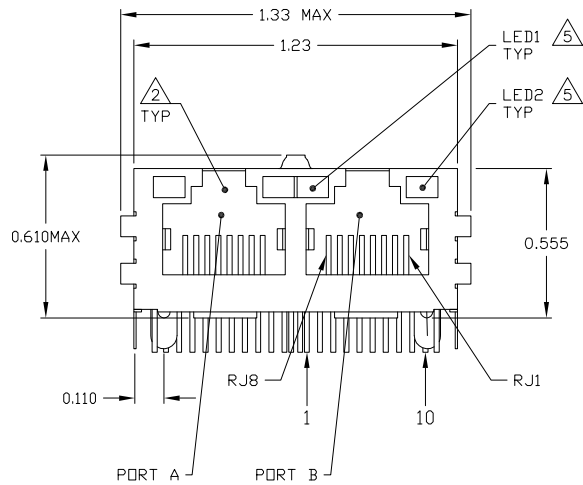
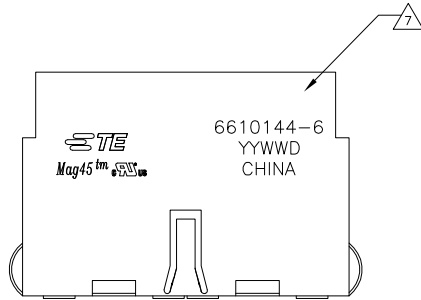


REV ISIONS		DATE	BY	APP'D
D	REV PER ECO-08-015464	05JUN2008	QL	TX
E	ECO-11-013425	20MAY2011	EL	LR

MECHANICAL:



1X2 SUGGESTED PANEL CUTOUT

- 1 MATERIALS:
  - HOUSING - THERMOPLASTIC PET POLYESTER FLAMMABILITY RATING UL 94V-0.
  - SHIELD - 0.010" THICK, C26800 BRASS PREPLATED WITH 30μINCH MIN SEMI-BRIGHT NICKEL. SOLDER TABS POST DIPPED WITH 100μINCH MIN SAC SOLDER.
  - MOD JACK CONTACTS - 0.0157" X 0.018" PHOSPHOR BRONZE, 50μINCH MIN OVERALL NICKEL UNDERPLATE WITH SELECT 50μINCH MIN HARD GOLD FINISH PLATE.
  - SOLDERTAILS WITH 100μINCH MIN MATTE TIN AND/OR SAC SOLDER DIP.
  - LIGHT EMITTING DIODE(LED) - DIFFUSED EPOXY LENS, 0.020" X 0.020" CARBON STEEL WIREFRAME LEADS PRE-PLATED WITH 80μINCH SILVER OVER 40μINCH NICKEL UNDERPLATE OVER 40μINCH COPPER UNDERPLATE. POST-PLATED WITH 100μINCH MIN MATTE TIN AND/OR SAC SOLDER DIP OR PURE TIN SOLDER DIP.
- 2 RJ45 JACK CAVITY CONFORMS TO FCC RULES AND REGULATIONS PART 68, SUB PART F.
- 3 MAGNETICS
  - IMPEDANCE: 100 OHMS
  - TURNS RATIO (CHIP: CABLE): 1:1 ALL FOUR PAIRS
  - OPEN CIRCUIT INDUCTANCE (OCL): 350μH MIN @100kHz, 0.1VRMS, 8mADC BIAS FROM 0 °C TO 70 °C, ALL FOUR PAIRS
  - ALL FOUR PAIRS BI-DIRECTIONAL
  - PERFORMANCE @ 25 °C:
    - INSERTION LOSS (IL): 1.1dB MAX FROM 0.5MHz TO 100MHz
    - RETURN LOSS (RL): 18dB MIN FROM 0.5MHz TO 40MHz
    - 12-20LOG(f/80)dB MIN FROM 40.1MHz TO 100MHz
    - CROSSTALK ATTENUATION: 35dB MIN FROM 0.5MHz TO 40MHz
    - 33-20xLOG(f/50)dB MIN FROM 40.1MHz TO 100MHz
    - COMMON MODE REJECTION RATIO (CMRR): 30dB MIN FROM 0.5MHz TO 100MHz
    - ISOLATION VOLTAGE: 2250VDC (MAX) FOR 60 SECONDS WITH A RISE TIME OF 500V/SEC AND WITH ALL PORTS CONNECTED.
- 4. OPERATING TEMPERATURE: FROM 0°C TO + 70°C.
- 5 LED IS DRIVEN WITH CONSTANT CURRENT AT APPROX 20mA.
  - LED COLOR:DOMINANT WAVELENGTH(D):GREEN 568nm TYP. AT IF=20mA
  - FORWARD VOLTAGE (VF): GREEN 2.2V TYP. AT IF=20mA
  - DOMINANT WAVELENGTH(D):YELLOW 588nm TYP. AT IF=20mA
  - FORWARD VOLTAGE (VF): YELLOW 2.1V TYP. AT IF=20mA.
- 6 THE MAGNETICS ARE SYMMETRICAL AND SUPPORT AUTO-MDI/MDIX.
- 7 TE CONNECTIVITY LOGO, PART NUMBER, DATE CODE, COUNTRY OF ORIGIN AND AGENCY APPROVAL MARKING IN APPROXIMATE LOCATION SHOWN.
- 8. THESE PARTS ARE RECOMMENDED FOR WAVE SOLDERING PROCESS, PEAK WAVE SOLDERING TEMPERATURE IS 265°C MAX, 10 SECONDS MAX.

0.110±0.010	GREEN/YELLOW	GREEN/YELLOW	2-6610144-6
0.145±0.010	GREEN	YELLOW	6610144-8
0.145±0.010	GREEN/YELLOW	GREEN/YELLOW	6610144-6
DIM "A"	LED1	LED2	PART NUMBER

DIMENSIONS:		DRAWING NO.		REV	
0	PAC	108-2100	1	1	1
1	PAC	108-2100	1	1	1
2	PAC	108-2100	1	1	1
3	PAC	108-2100	1	1	1
4	PAC	108-2100	1	1	1
MATERIAL		FINISH		WEIGHT	
A1		C=6610144		A1 00779	
CUSTOMER DRAWING		SCALE		SHEET	
		4:1		1 of 2	



单击下面可查看定价，库存，交付和生命周期等信息

[>>TE Connectivity\(泰科\)](#)