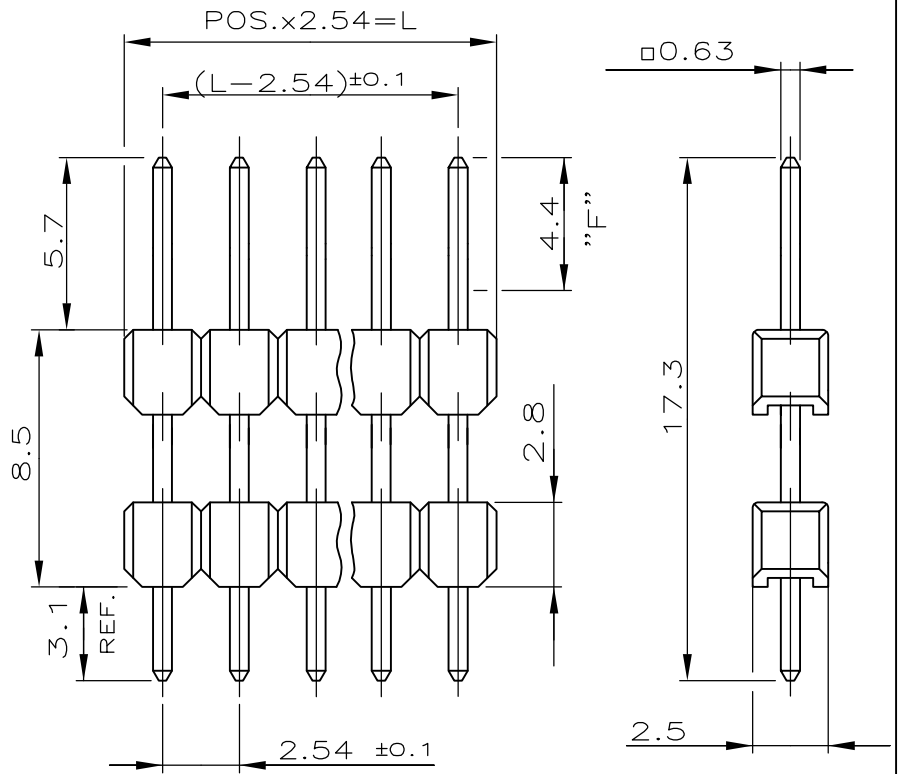


LOC	DIST	REVISIONS					
A1	—	P	LTR	DESCRIPTION	DATE	DWN	APVD
			C	CONTACT PIN MATERIAL & PLATING CHANGE	26JUN2014	PS	JK

POS.	L±0.5	PART NO.
—	—	—
2	5.08	966245-2
3	7.62	—
4	10.16	—
5	12.70	—
6	15.24	—
7	17.78	—
8	20.32	—
9	22.86	—
10	25.40	—
11	27.94	—
12	30.48	—
13	33.02	—
14	35.56	—
15	38.10	—
16	40.64	—
17	43.18	—
18	45.72	—
19	48.26	—
20	50.80	—
21	53.34	—
22	55.88	—
23	58.42	—
24	60.96	—
25	63.50	—
26	66.04	—
27	68.58	—
28	71.12	—
29	73.66	—
30	76.20	—
31	78.74	—
32	81.28	—
33	83.82	—
34	86.36	—
35	88.90	—
36	91.44	—
37	93.98	—
38	96.52	—
39	99.06	—
40	101.60	—
41	104.14	—
42	106.68	—
43	109.22	—
44	111.76	—
45	114.30	—
46	116.84	—
47	119.38	—
48	121.92	—
49	124.46	—
50	127.00	966245-0

CONTACT PIN	CuZn	1
HOUSING	PBT	GREEN
DESCRIPTION	MATERIAL	FINISH / COLOR



- 1 MATING SIDE: MIN 0.7µm PdNi+ MIN 0.1µm GOLD FLASH IN ZONE "F" OVER 1.27µm NICKEL
SOLDER SIDE: 3.0 TO 5.0µm TIN OVER 1.27µm NICKEL.
- 2 OBSOLETE PARTS: OBSOLETE CIS STREAMLINING PER D.RENAUD/D.SINISI
- 3 OBSOLETE

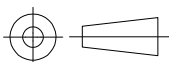
RELEASED FOR PUBLICATION

ALL RIGHTS RESERVED.

COPYRIGHT - By -

THIS DRAWING IS UNPUBLISHED.

DIMENSIONS:		DWN	25.03.93	MATERIAL	SEE TABLE	FINISH	SEE TABLE
mm		CHK	A.HO	TE Connectivity			
TOLERANCES UNLESS OTHERWISE SPECIFIED:		APVD	M.SCHAARSCHMIDT				
±0.2 mm		PRODUCT SPEC	—	NAME			
0 PLC	± -	108-18012		SPEC. AMPMODU II PIN HEADER, SINGLE ROW			
1 PLC	± -	APPLICATION SPEC	—	SIZE	CAGE CODE	DRAWING NO	RESTRICTED TO
2 PLC	± -	—		A4	00779	C-966245	—
3 PLC	± -	WEIGHT	—	CUSTOMER DRAWING			
4 PLC	± -	—		SCALE	4:1	SHEET	1 OF 1
ANGLES	± -	—		REV C			



单击下面可查看定价，库存，交付和生命周期等信息

[>>TE Connectivity\(泰科\)](#)