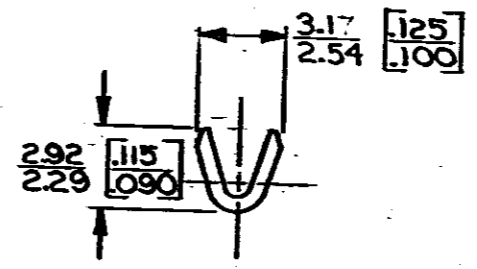
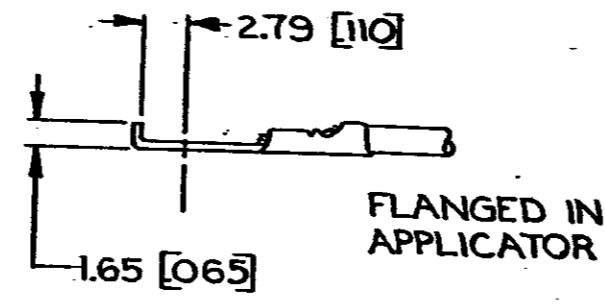
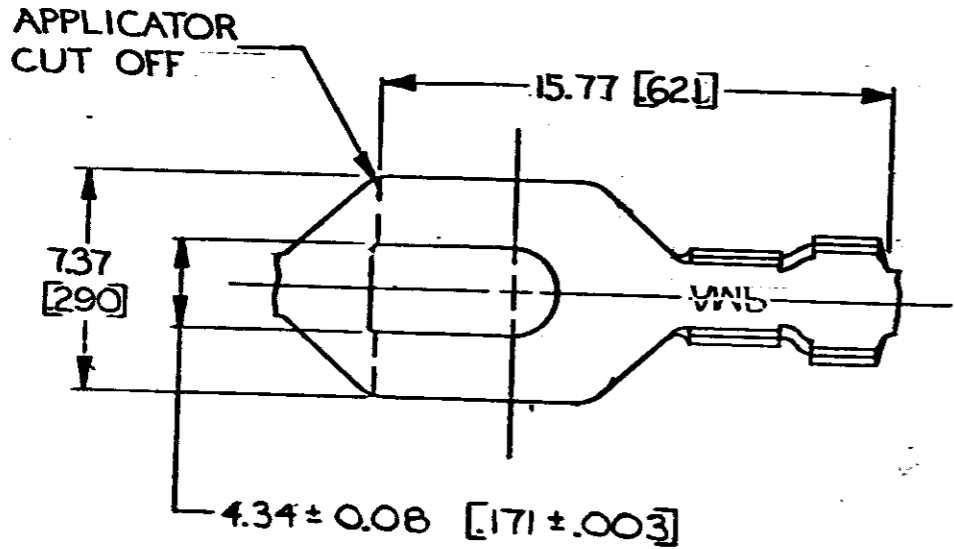
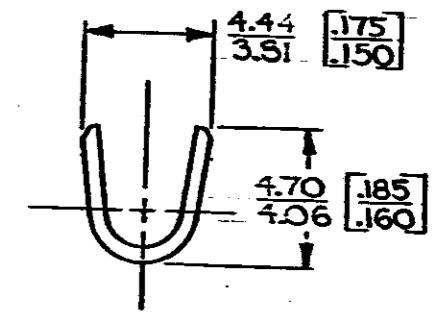


© COPYRIGHT 1964 BY AMP INCORPORATED, HARRISBURG, PA.  
 ALL INTERNATIONAL RIGHTS RESERVED. AMP INCORPORATED PRODUCTS  
 COVERED BY U. S. AND FOREIGN PATENTS AND/OR PATENTS PENDING.

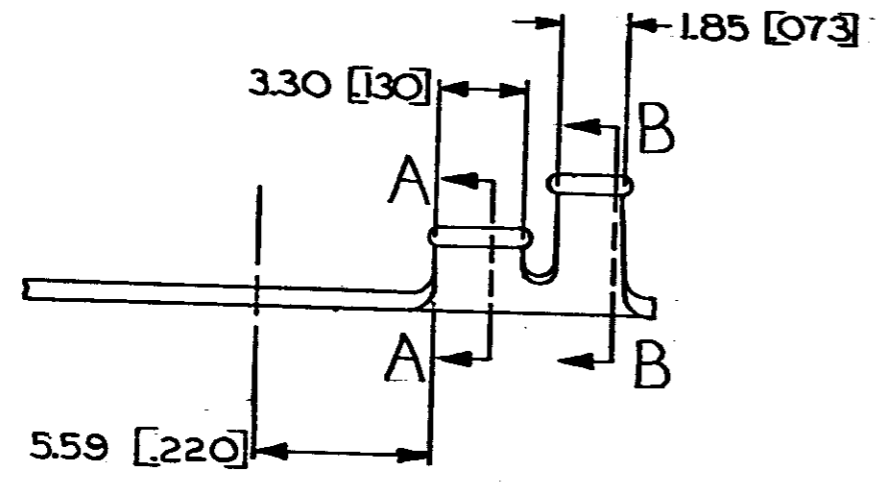
		REVISIONS			LOC	DIST
P	F	ZONE	LTR	DESCRIPTION	DATE	APPROVED
	✓		L	REDRAWN & REVISED A-3943	5-15-78	SS



SECT A-A



SECT. B-B



M 4 #8	0.2-0.6 mm <sup>2</sup> [24-20]	2.03-2.54 [080-.100]	TIN	0.51 [020] BRASS	41589-A
STUD SIZE	WIRE RANGE	INSULATION RANGE	FINISH	MATERIAL	41589
					PART NO

UNLESS OTHERWISE SPECIFIED DIMENSIONS ARE IN INCHES mm	CONTRACT NO
TOLERANCES ON:	DR J. Magano 5-15-78
DECIMALS ±0.38 [015]	CHK [Signature]
ANGLES ±1°	APPD R.P. Frantz 8-1-78
MATERIAL	APPD [Signature]
SEE TABLE	DSGN APPD
FINISH	OTHER APPD
SEE TABLE	



NAME		
SPADE		
SIZE	CODE IDENT NO	DRAWING NO
B	00779	41589
SCALE	SHEET	

**METRIC**

- CONTINUOUS STRIP ON REELS.
- DIMENSIONS IN BRACKETS ARE IN INCHES.
- SUFFIX LETTER MUST BE USED ONLY WHEN ORDERING APPLICATOR TOOLING.

单击下面可查看定价，库存，交付和生命周期等信息

[>>TE Connectivity\(泰科\)](#)