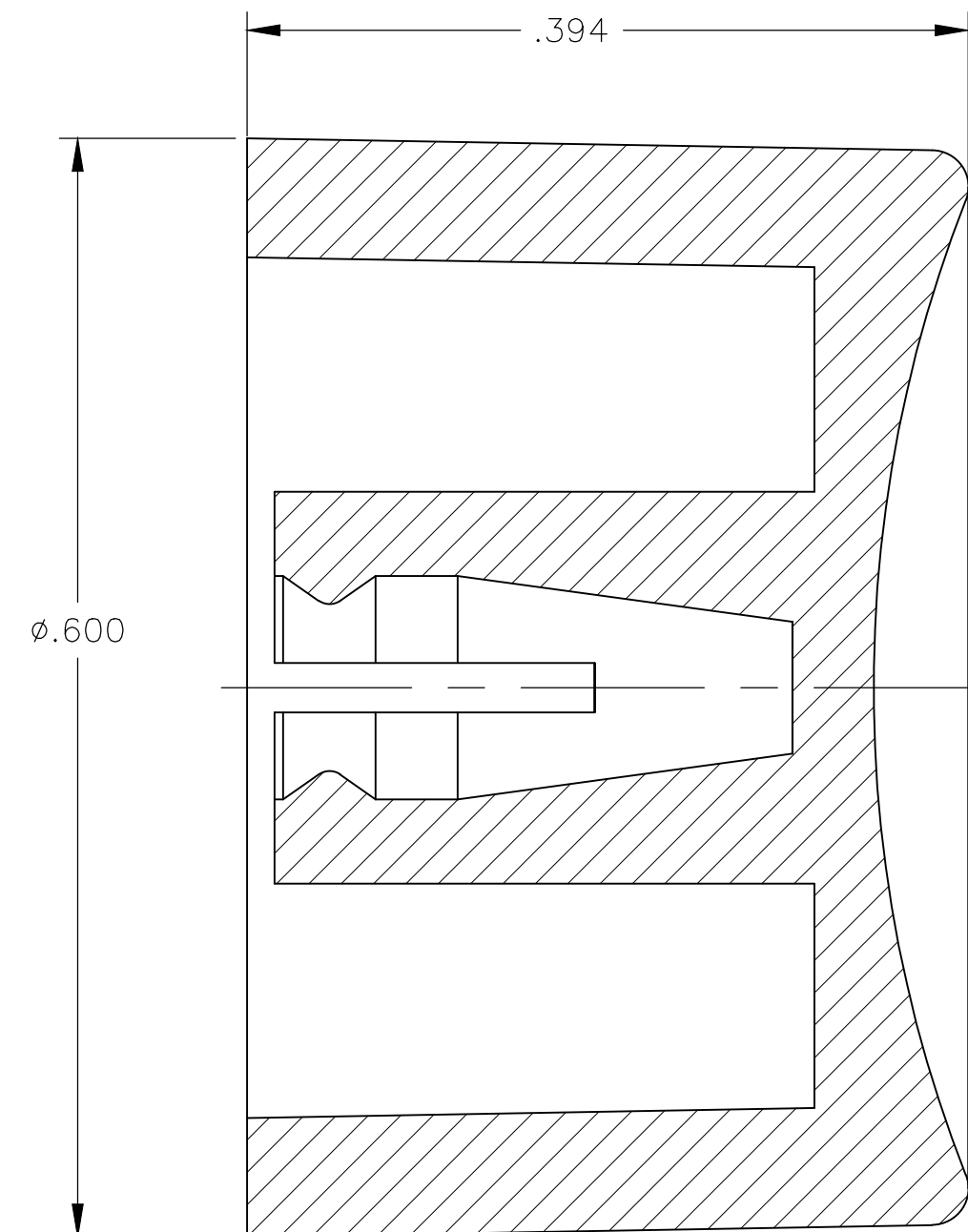
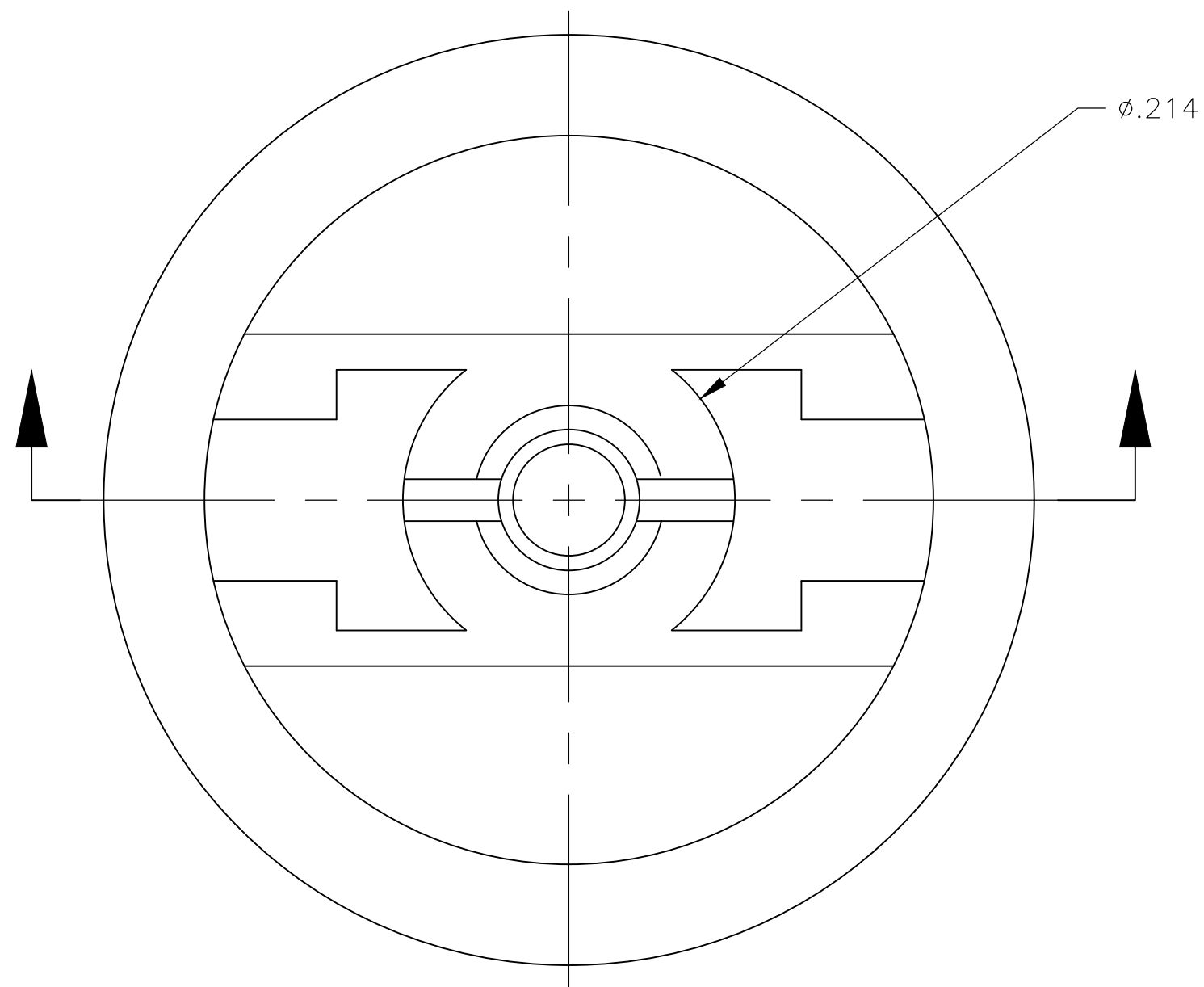


THIS DRAWING IS UNPUBLISHED. RELEASED FOR PUBLICATION
 © COPYRIGHT - By - ALL RIGHTS RESERVED.

REVISIONS					
P	LTR	DESCRIPTION	DATE	DWN	APVD
A2		ECR-16-017266	01JUN2018	SR	PO



OBSOLETE	WHITE	C23904	1825069-7
	BLUE	C23604	1825069-6
	GREEN	C23504	1825069-5
OBSOLETE	YELLOW	C23404	1825069-4
	ORANGE	C23304	1825069-3
	RED	C23204	1825069-2
	BLACK	C23004	1825069-1
COLOR	ALCO PART NUMBER	TE PART NUMBER	

- MATERIAL SHALL COMPLY WITH EU DIRECTIVE 2002/95/EC OF 20JAN2003 (ROHS)
- CAP FOR USE WITH GREEN SERIES PUSHBUTTON SWITCHES AS SHOWN ON DRAWINGS 4-1437567-3 AND 2-1437567-9

THIS DRAWING IS A CONTROLLED DOCUMENT.		DWN M.BINNER 30NOV04	TE Connectivity Ltd.	
DIMENSIONS: INCHES		CHK M.ZITTO 30NOV04		
TOLERANCES UNLESS OTHERWISE SPECIFIED: 0 PLC ± - 1 PLC ± - 2 PLC ± - 3 PLC ± .003 4 PLC ± - ANGLES ± 1°		APVD M.ZITTO 30NOV04	NAME CAP, GREEN SERIES, PUSHBUTTON, C23	
MATERIAL POLYAMIDE		FINISH -	PRODUCT SPEC -	APPLICATION SPEC -
		WEIGHT	SIZE A2	CAGE CODE 00779
		CUSTOMER DRAWING	DRAWING NO C=1825069	RESTRICTED TO -
		SCALE 10:1	SHEET 1 of 1	REV A2

单击下面可查看定价，库存，交付和生命周期等信息

[>>TE Connectivity\(泰科\)](#)