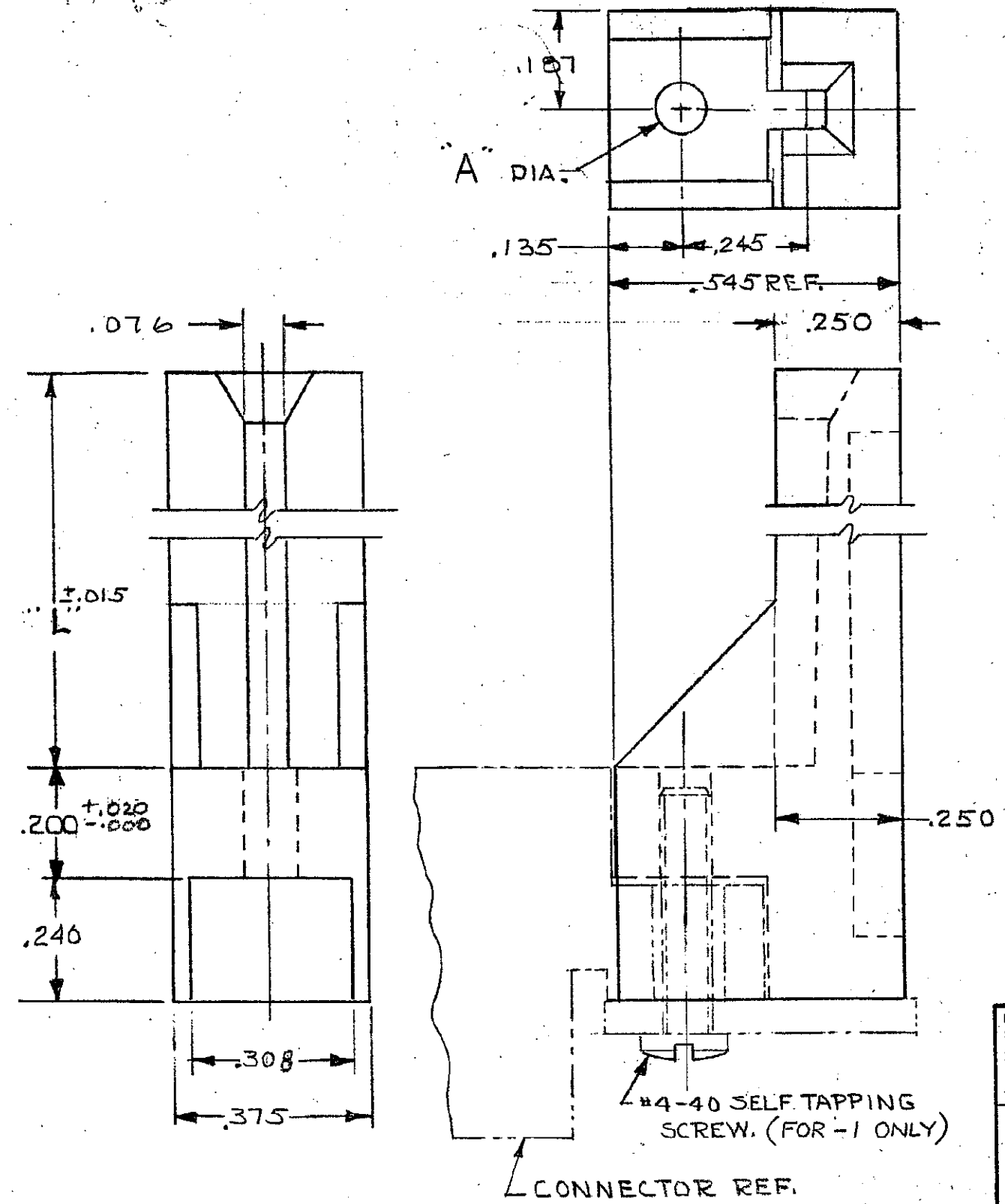


DRAWING MADE IN AMERICAN PROJECTION

© 1970 BY AMP INCORPORATED. ALL RIGHTS RESERVED. AMP PRODUCTS COVERED BY PATENTS AND/OR PATENTS PENDING.

REVISIONS				
ZONE	LTR	DESCRIPTION	DATE	APPROVED
	0	RELEASED, WAS 5112-255-1 CUST. SW	6-7-71	D.H.
	01	ADDED - 2	3155 MS 9-71	D.H.
	A	REVISED 3424 M.S.	3-72	D.H.
	B	REVISED PER ECN 4001	RW 1-10-74	M.Z
	B1	ADDED - 3, - 4 4125	M.S. 5-24-74	M.Z
	C	REVISED MATL. 4657	DR 1-9-76	DR. M.S.
	C1	ADDED - 5	6567 AMS 3-17-80	
	C2	REV PER AD1089	2-7-86	
	D	OBSOLETE - 2 & - 4 PER AD1831	3-22-88	NS
✓	E	REV PER AD 3565	9/89	WJ
✓	F	REV PER EC 0320-349-97	24 NOV 97	NS



583760-5	.093	2.310	OBSOLETE
583760-4	.144	2.750	OBSOLETE
583760-3	.093	2.750	OBSOLETE
583760-2	.144	4.000	OBSOLETE
583760-1	.093	4.000	
PART NO.	"A"	"L"	

UNLESS OTHERWISE SPECIFIED DIMENSIONS ARE IN INCHES TOLERANCES ON: DECIMALS ±.005 ANGLES ±.2	CONTRACT NO. 11-19-70		AMP INCORPORATED HARRISBURG, PENNSYLVANIA	
	DR. <i>Rundell</i>	CHK. <i>S. Heide</i> 6-4-71		
MATERIAL GLASS FILLED NYLON COLOR: BLACK	APPD. <i>R. Kaufman</i> 6-4-71	REF. <i>R. Shurman</i> 6-7-71	CARD GUIDE, AMP LEAF	
DSGN APPD.	OTHER APPD.	SIZE B	CODE IDENT NO. 00779	NUMBER 583760
		SCALE 4:1	SHEET 1 OF 1	

D
C
B
A
LOC
F7
PRINT DISC 22

单击下面可查看定价，库存，交付和生命周期等信息

[>>TE Connectivity\(泰科\)](#)