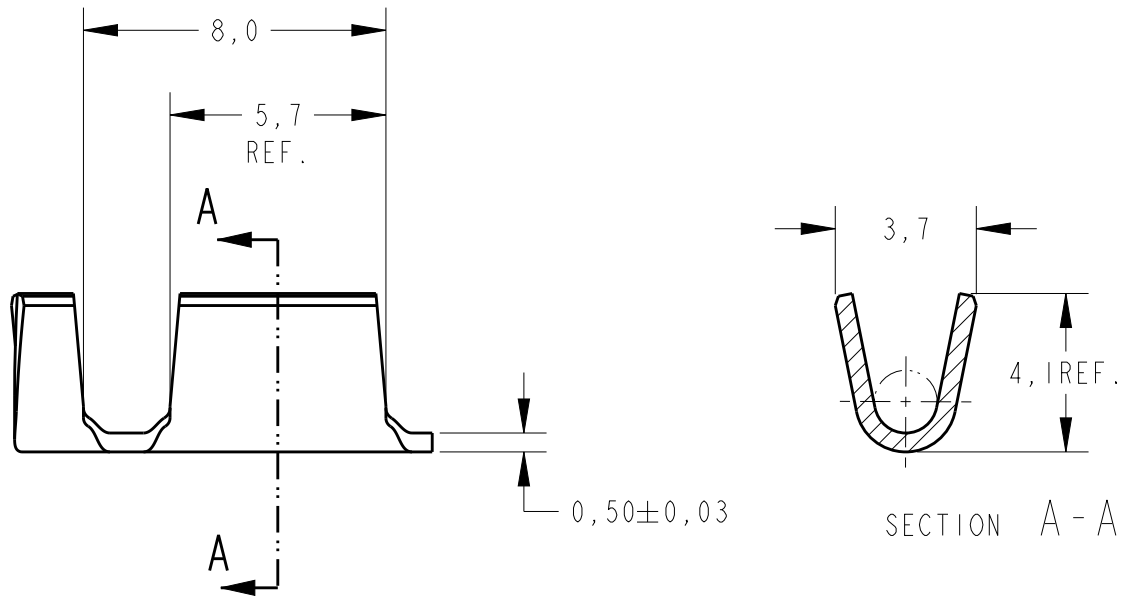
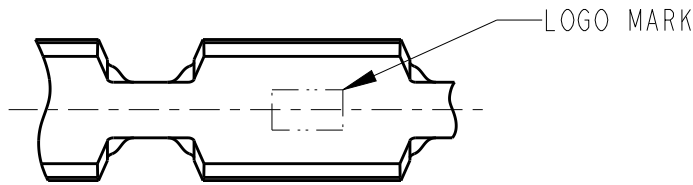


REVISIONS

P	LTR	DESCRIPTION	DATE	DWN	APVD
	B2	REDRAWN AND REV. ECO15-011920	15OCT2015	HC	WLS
	B3	REVISED BY ECO 16-003728	11MAR2016	HC	WLS
	B4	REVISED BY ECO 19-007234	09MAY2019	WLS	WLS

1 - OBSOLETE PARTS: OBSOLETE CIS STREAMLINING PER D.RENAUD/D.SINISI

2 - CRIMP WIDTH .110 F TYPE
 CRIMP HEIGHT (+/- .002) = (TOTAL CMA + 10606) / 186966



OBSOLETE 1	TIN PLATED	STEEL	626584-5
OBSOLETE	NICKEL PLATED	STEEL	626584-4
OBSOLETE		STEEL	626584-3
OBSOLETE	TIN PLATED	BRASS	626584-2
		BRASS	626584-1
	FINISH	MATERIAL	PART NUMBER

WIRE RANGE:
1500/5000 CMA

20

RELEASED FOR PUBLICATION

ALL RIGHTS RESERVED.

BY -

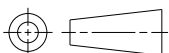
COPYRIGHT 20

DIMENSIONS:

mm

TOLERANCES UNLESS OTHERWISE SPECIFIED:

0 PLC	±
1 PLC	±0,3
2 PLC	±0,3
3 PLC	±
4 PLC	±
ANGLES	±1°



DWN 25MAY2015

H.C.CANTERI

CHK -

W.L.STEFANI

APVD -

PRODUCT SPEC

-

APPLICATION SPEC

-

WEIGHT

-

MATERIAL

-

FINISH

-



TE Connectivity

NAME SPLICE

-

SIZE

A4

CAGE CODE

-

DRAWING NO

C-626584

RESTRICTED TO

CUSTOMER DRAWING

SCALE

5/1

SHEET

1

OF

1

REV

B4

单击下面可查看定价，库存，交付和生命周期等信息

[>>TE Connectivity\(泰科\)](#)