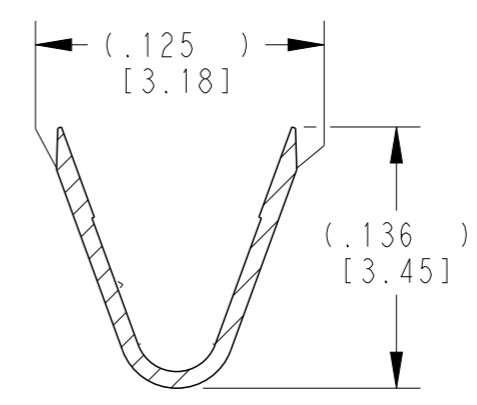
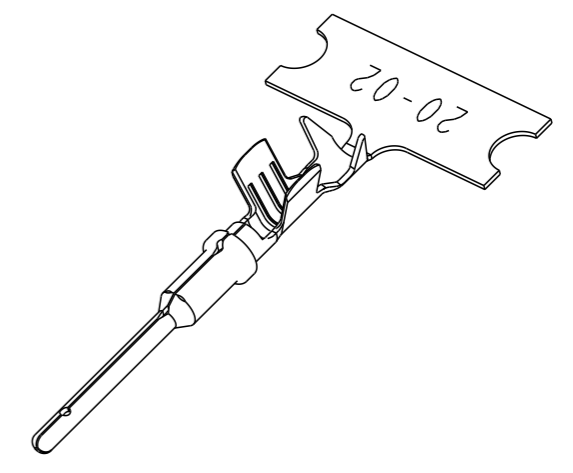
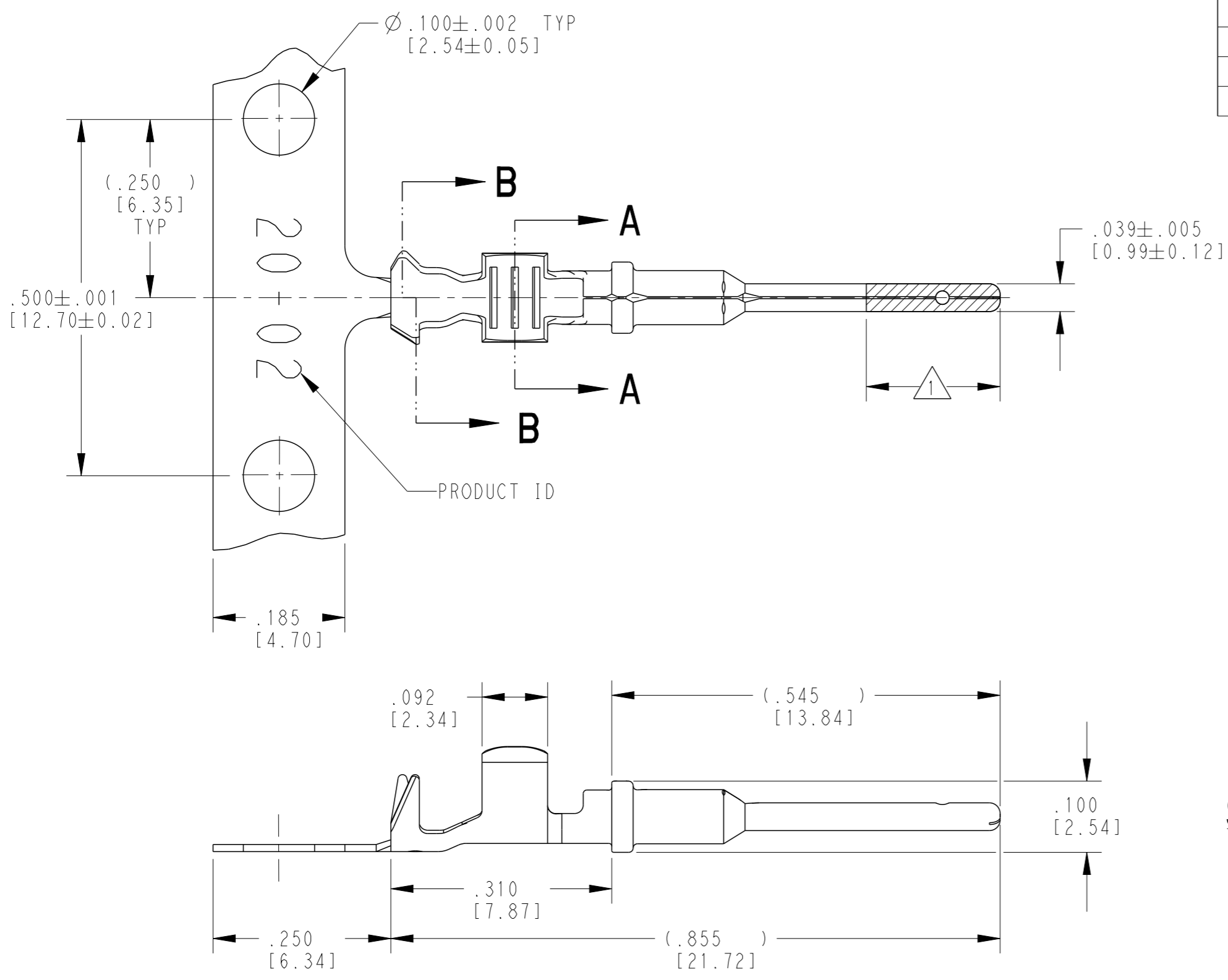
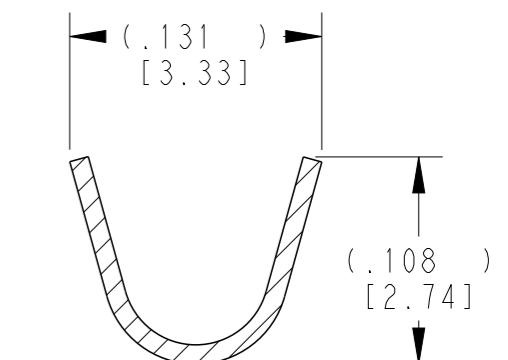


THIS DRAWING IS UNPUBLISHED. RELEASED FOR PUBLICATION 2018
 © COPYRIGHT 2018 BY - ALL RIGHTS RESERVED.

P	LTR	DESCRIPTION	DATE	DWN	APVD
	D	REVISED PER E.O. P20392	03DEC2009		RDR
	E	REVISED PER PCN :E-18-007949	23MAY2018	DD	DM



SECTION A-A
WIRE BARREL



SECTION B-B
INSULATION BARREL

- 3 MATERIAL: .010 [0.25] THICK COPPER ALLOY
- 2. WIRE RANGE: 22 AWG TO 16 AWG [0.35-1.5 mm²]
INSULATION RANGE: $\varnothing .051$ - $\varnothing .085$ [$\varnothing 1.30$ -2.16]
- 1 APPLIES ONLY TO SELECTIVE GOLD 1060-20-0244.
INDICATED DIMENSION SHOWS GOLD PLATED AREA.

NOTES: UNLESS OTHERWISE SPECIFIED

THIS DRAWING IS A CONTROLLED DOCUMENT.		DWN J. APOSTOL 01DEC2009
DIMENSIONS: INCHES [mm]		CHK D. MEYER 02DEC2009
TOLERANCES UNLESS OTHERWISE SPECIFIED:		APVD R. REED 03DEC2009
0 PLC ±	1 PLC ±	PRODUCT SPEC 0425-015-0000
2 PLC ±	3 PLC ±	APPLICATION SPEC 114-151003
4 PLC ±	ANGLES ±	WEIGHT 0.15 g
MATERIAL 3	FINISH -	CUSTOMER DRAWING
SEE TABLE		SCALE 6:1

TE INTERNAL PN	DEUTSCH PN	PLATING
1060-20-0222	1060-20-0222	NICKEL
1060-20-0244	1060-20-0244	SELECTIVE GOLD
1060-20-0277	1060-20-0277	TIN



NAME STAMPED CONTACT PIN SIZE 20			
SIZE A3	CAGE CODE 4AFU8	DRAWING NO 1060-20-02XX	RESTRICTED TO -
SCALE 6:1		SHEET 1 OF 1	REV E

单击下面可查看定价，库存，交付和生命周期等信息

[>>TE Connectivity\(泰科\)](#)