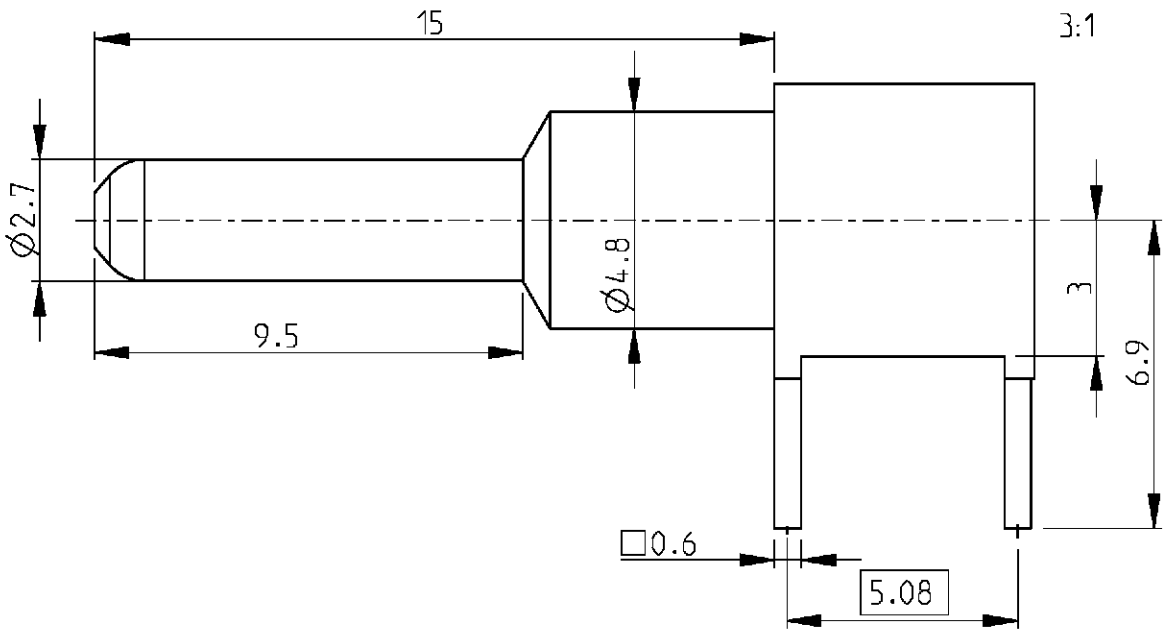
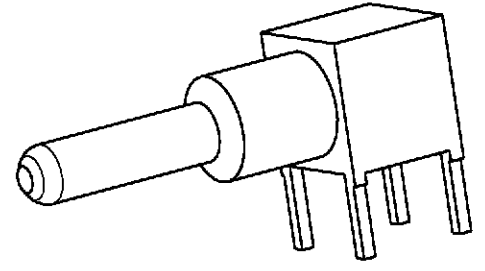
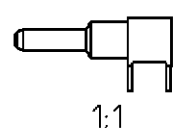


| LOC | DIST | REVISIONS | | | | |
|-----|------|-------------|------|-----------|------|----|
| P | LTR | DESCRIPTION | DATE | DWN | APVD | |
| GW | - | A | - | 26APR2001 | BL | KM |
| | | | | | | |
| | | | | | | |
| | | | | | | |



1) All dimensions are maximum unless otherwise specified.



| Cross reference table | | | |
|-----------------------|------------------|----------|-------------------------------|
| Old part number | Tyco part number | Material | Plating |
| V23648-A21-B7 | 4-1393589-0 | Brass | 1 μm Au or Pd in contact area |

2000

THIS DRAWING IS UNPUBLISHED. BY TYCO ELECTRONICS CORPORATION. ALL RIGHTS RESERVED. © COPYRIGHT 2000

| | | | | | | |
|--|----------------------|-----------|--|-----------|---------------|---------------|
| DIMENSIONS: mm | DWN B. Lenvain | 26APR2001 | MATERIAL | - | FINISH | - |
| | CHK K. Mattheeuws | 26APR2001 | Tyco Electronics Oostkamp - Belgium | | | |
| TOLERANCES UNLESS OTHERWISE SPECIFIED: | APVD R. Leeman | 26APR2001 | | | | |
| 0 PLC ± | PRODUCT SPEC | - | NAME Pre-mating high current plug with PCB connection | | | |
| 1 PLC ± | APPLICATION SPEC | - | SIZE | CAGE CODE | DRAWING NO | RESTRICTED TO |
| 2 PLC ± | | | A4 | 00779 | ©=4-1393589-0 | - |
| 3 PLC ± | WEIGHT | - | CUSTOMER DRAWING | | | |
| 4 PLC ± | | | SCALE | SHEET | OF | REV |
| ANGLES ± | | | 6/1 | 1 | 1 | A |

单击下面可查看定价，库存，交付和生命周期等信息

[>>TE Connectivity\(泰科\)](#)