

THIS DRAWING IS UNPUBLISHED.

RELEASED FOR PUBLICATION

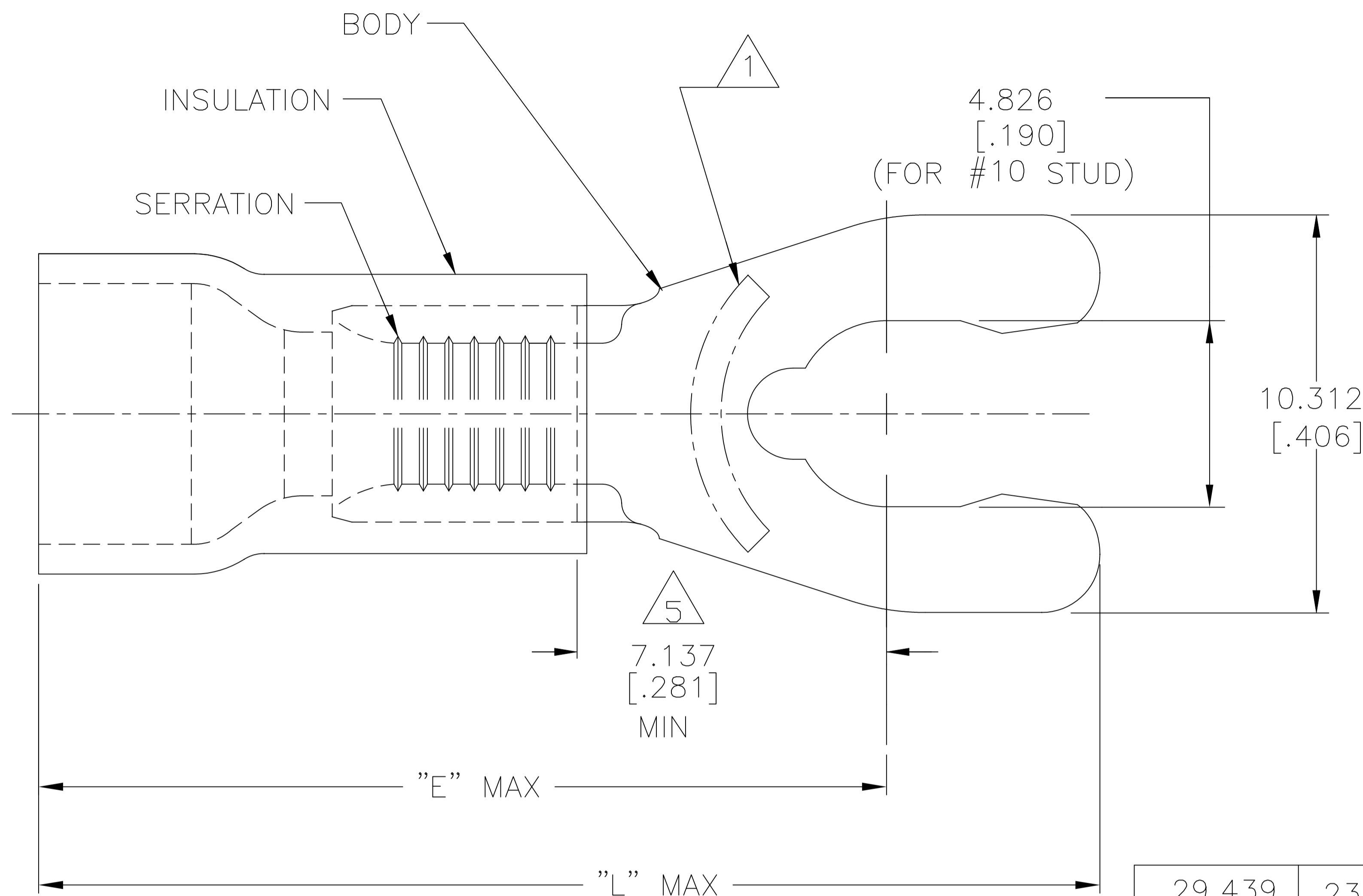
© COPYRIGHT - By -

ALL RIGHTS RESERVED.

REVISIONS

P	LTR	DESCRIPTION	DATE	DWN	APVD
T3		REVISED PER ECO-11-004917	11MAR11	RK	HMR
T4		REVISED PER ECO-17-014338	11APR2018	RS	DR

<b>AMP</b> WIRE RANGE	Listed FILE E13288	LR7189 Certified
12-10 AWG SOLID OR STRANDED	12 AWG STRANDED	12-10 AWG SOLID OR STRANDED



- 1 STAMP 10S AMP 12-10\* APPROX AS SHOWN
- 2 SEE TABLE FOR WIRE INSUL DIA
- 3 BODY MATL THK, 1.016±0.051 [.040±.002]
- 4 MATERIAL: BODY - BRASS PER ASTM B36  
INSULATION - PVC
- 5 APPLIES FROM CENTER OF STUD  
HOLE TO EDGE OF METAL WIRE  
BARREL

29.439 [1.159]	23.774 [.936]	6.350-7.620 [.250-.300]	1500	ON TAPE, REEL	52963-5
29.439 [1.159]	23.774 [.936]	6.350-7.620 [.250-.300]	500	LOOSE PIECE	52963-4
27.940 [1.100]	22.276 [.877]	3.810-6.350 [.150-.250]	500	LOOSE PIECE	52963-2
27.940 [1.100]	22.276 [.877]	2.667-5.080 [.105-.200]	2500	ON TAPE, REEL	52963-1
27.940 [1.100]	22.276 [.877]	2.667-5.080 [.105-.200]	500	LOOSE PIECE	52963
L	E	WIRE INSUL DIA	QTY	PACKAGE TYPE	PART NO

AMP INCORPORATED  
CUSTOMER SERVICE SYSTEMS

MAX RECOMMENDED OPERATING  
TEMPERATURE:  
105°C [221°F]

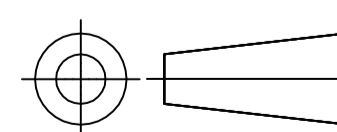
VOLTAGE RATING:  
600V MAX  
(1000V FIXTURE OR SIGN)

CIRCULAR MIL AREA:  
2.62-6.64mm² [5,180-13,100]  
SOLID OR STRANDED

THIS DRAWING IS A CONTROLLED DOCUMENT FOR  
AMP INCORPORATED. IT IS SUBJECT TO CHANGE  
AND THE CONTROLLING ENGINEERING ORGANIZATION  
SHOULD BE CONTACTED FOR THE LATEST REVISION.

THIS DRAWING IS A CONTROLLED DOCUMENT.

DIMENSIONS:  
mm [INCHES]



MATERIAL



TOLERANCES UNLESS  
OTHERWISE SPECIFIED:

0 PLC	± -
1 PLC	± -
2 PLC	± -
3 PLC	± 0.127[.005]
4 PLC	± -
ANGLES	± -

FINISH  
BODY:  
TIN PER ASTM B545  
INSULATION:  
COLOR-YELLOW

DWN 26JUN95

L OLMEDA

CHK 26JUN95

M ELLIS

APVD 26JUN95

G NGO

PRODUCT SPEC  
UL 486A-B

APPLICATION SPEC

114-2161

WEIGHT

CUSTOMER DRAWING



NAME  
TERMINAL, SPRING SPADE,  
SHORT, PLASTI-GRIP  
WIRE SIZE: 12-10 AWG

SIZE CAGE CODE DRAWING NO RESTRICTED TO

A3 00779 C=52963

SCALE 6:1 SHEET 1 of 1 REV T4

单击下面可查看定价，库存，交付和生命周期等信息

[>>TE Connectivity\(泰科\)](#)