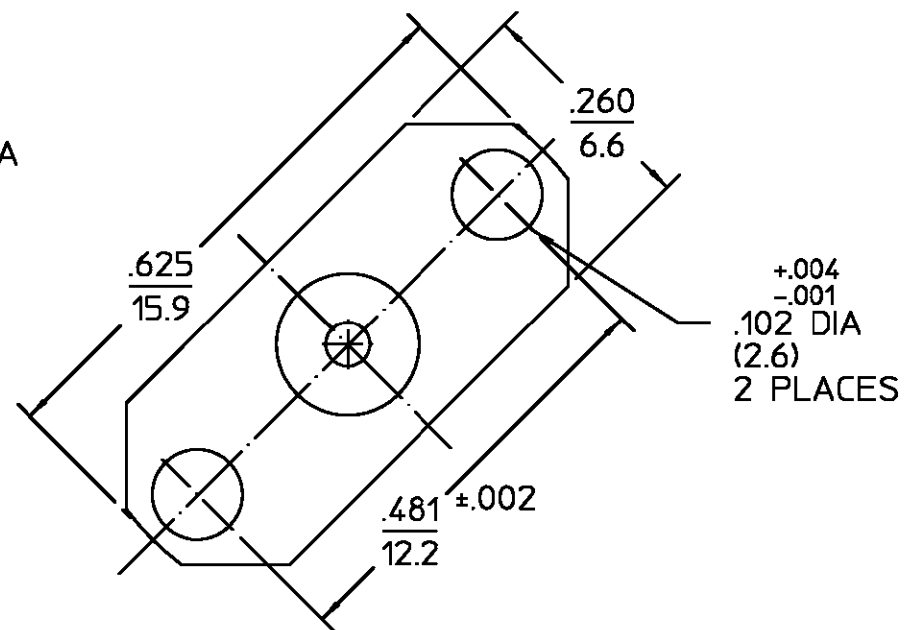
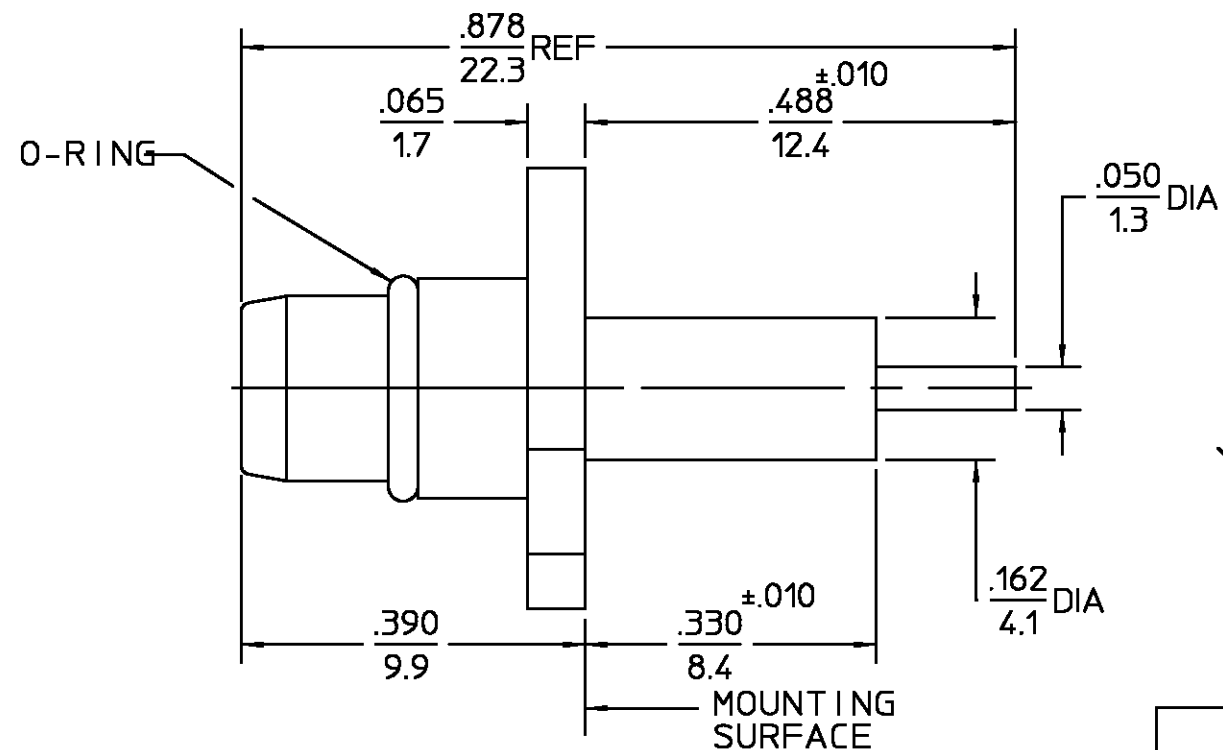


REVISIONS			
REV	DESCRIPTION	DATE	APPROVED
01 ₀	RELEASED	5/9/96	<i>PCW</i>
B	PER EC 0U20-0262-01	18DEC01	<i>C. Hwang</i>



ELECTRICAL	MECHANICAL	ENVIRONMENTAL
Nominal Impedance (Ohms) 50		Temperature Rating -40° to +105°C
Frequency Range (GHz) DC to 6		Vibration MIL-STD-1344, Method 2005, Condition V-F
Volt Rating (VRMS MAX) @ Sea Level	Force to Engage (Lbs MAX) 3 & Disengage (Lbs MAX) 1.0	Shock MIL-STD-1344, Method 2004 Condition A
Return Loss 20.0 dB Min	Center Contact Captivation	Thermal Shock MIL-STD-1344 Method 1003, Condition A
Insertion Loss (dB MAX) 0.5X f(GHz)	Axial (Lbs) 6.0	Moisture Resistance MIL-STD-1344 Method 1002, Cond B Type I
RF Leakage (dB MIN) (Fully Mated) -(60-f(GHz))	Weight (Grams) TBD	Corrosion - MIL-STD-1344, Method 1001, 48 Hrs
Corona, 70,000 Ft (VRMS MIN) 190		
Dielectric Withstanding Voltage (VRMS MIN) @ Sea Level 500		
Contact Resistance (Milliohms MAX) Center Contact 2.0 Outer Contact 5.0		
RF High Potential @ Sea Level (VRMS MIN @ 5 MHz) 500		
I.R.(Megohms MIN) 10000		

COMPONENT	MATERIAL	FINISH
HOUSING	BRASS PER ASTM-B-16, HALF HARD	WHITE BRONZE PLATE
DIELECTRIC	TFE FLUOROCARBON PER ASTM-D-1457	N/A
CENTER CONTACT	BERYLLIUM COPPER PER ASTM-B-196 OR ASTM-B-197, ALLOY C17300, CONDITION H	GOLD PLATE PER MIL-G-45204
O-RING	FLOUROSILICONE PER MIL-R-25988, CLASS 1, TYPE 1	N/A

UNLESS OTHERWISE SPECIFIED DIMENSIONS ARE IN INCHES FRAC. ± 1/64 DEC. ±.005 ANGLES ± 1°	DRAWN BY	DATE	AMP AMP Incorporated 140 Fourth Avenue Waltham, MA 02451-7599							
	CHECKED BY	5/9/96								
These drawings and specifications are the property of M/A COM Interconnect Div. and shall not be reproduced or copied or used in whole or in part as the basis for the manufacture or sale of item(s) without written permission.	USE ASSY PROCEDURE		TITLE OSP 2 HOLE FLANGE MOUNT PLUG RECEPTACLE - STRAIGHT TERMINAL							
	NO. A.P. _____		<table border="1"> <tr> <td>SIZE B</td> <td>CODE IDENT NO. 26805</td> <td>4451-5002-36</td> <td>REV 01₀</td> </tr> <tr> <td>SCALE 6 X</td> <td colspan="2"></td> <td>SHEET 1 OF 1</td> </tr> </table>	SIZE B	CODE IDENT NO. 26805	4451-5002-36	REV 01 ₀	SCALE 6 X		
SIZE B	CODE IDENT NO. 26805	4451-5002-36	REV 01 ₀							
SCALE 6 X			SHEET 1 OF 1							

CUSTOMER DRAWING

AMP PART # 1059345-1
SHEET 1 OF 1 REV B

单击下面可查看定价，库存，交付和生命周期等信息

[>>TE Connectivity\(泰科\)](#)