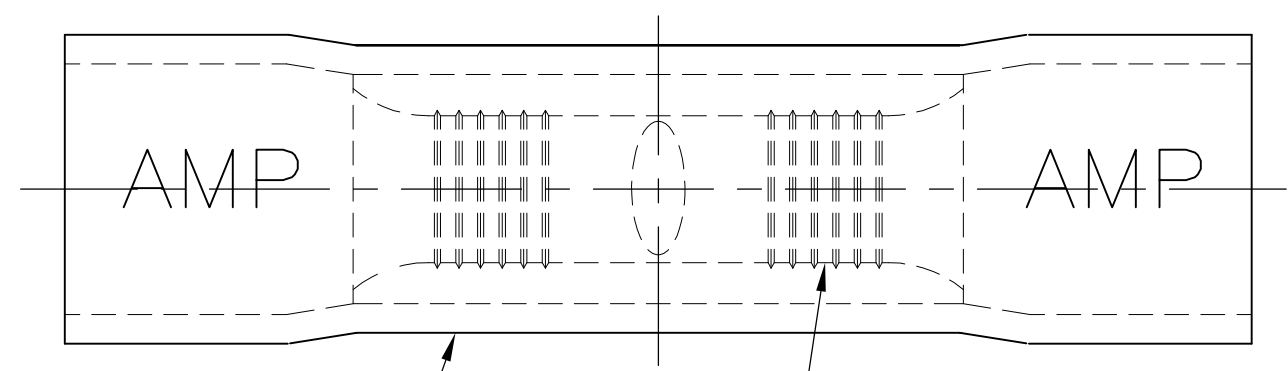
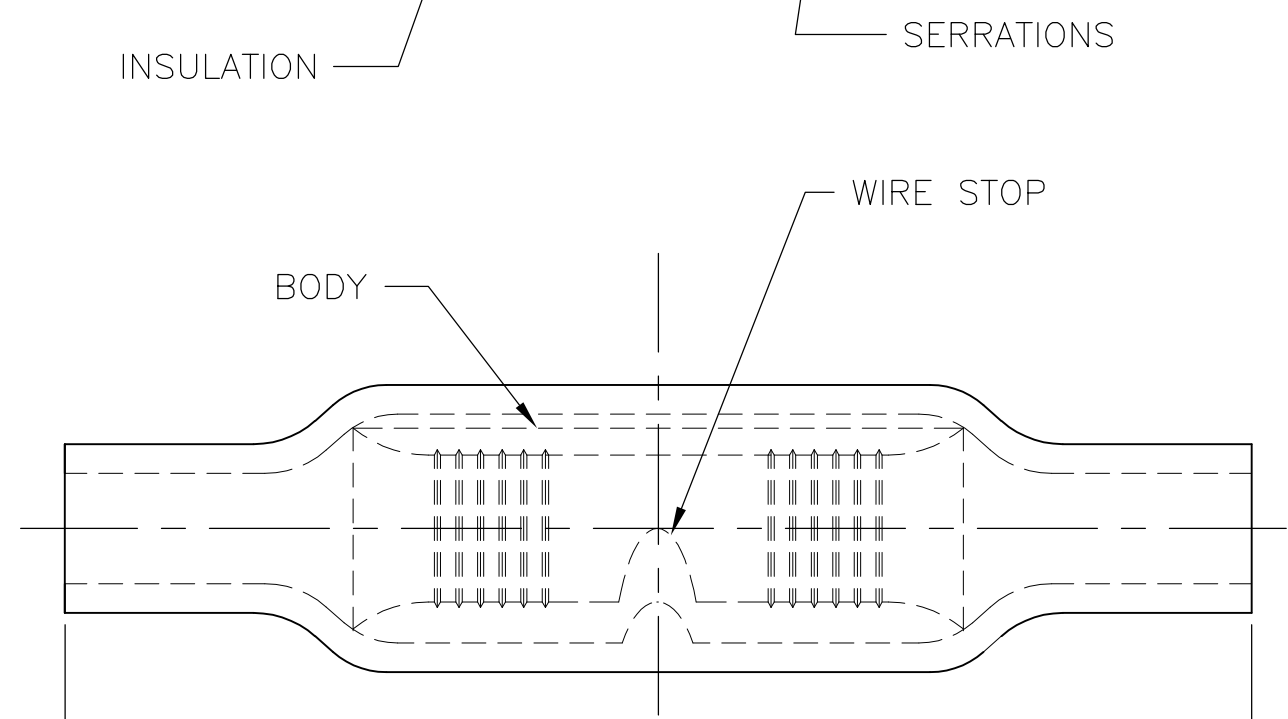


THIS DRAWING IS UNPUBLISHED. RELEASED FOR PUBLICATION
 © COPYRIGHT - By - ALL RIGHTS RESERVED.

LOC		DIST		REVISIONS			
P	LTR	DESCRIPTION		DATE	DWN	APVD	
	G1	REDRAW PER ECO-11-020548		02FEB12	KH	DR	



1 FOR 6.22[.245] X 3.43[.135] MAX OVALED WIRE INSULATION DIA



26.16±0.89
[1.030±.035]

QTY	PACKAGE TYPE	MATERIAL & FINISH	PART NO
2000	ON TAPE	INSULATION: PVC COLOR: BLUE BODY: COPPER PER ASTM B152 TIN PLATE PER ASTM B545	1-34204-0
100	LOOSE PC,BOX		8-34204-1
1000	LOSE PIECE		34204

THIS DRAWING IS A CONTROLLED DOCUMENT.

DIMENSIONS: mm [INCHES]	TOLERANCES UNLESS OTHERWISE SPECIFIED:
	0 PLC ± -
	1 PLC ± -
	2 PLC ± -
	3 PLC ± -
	4 PLC ± -
ANGLES ± -	± -
MATERIAL	FINISH
-	-

DWN KIRAN HOLAL 02FEB12	 TE Connectivity	NAME	
CHK ROHDE DANIEL 02FEB12		-	
APVD ROHDE DANIEL 02FEB12		-	
PRODUCT SPEC		-	
APPLICATION SPEC	-		WIRE SPLICE PLASTI-GRIP-BUTT-OVALED WIRE SIZE:16-14
WEIGHT	SIZE	CAGE CODE	DRAWING NO
-	A3	00779	C-34204
CUSTOMER DRAWING			RESTRICTED TO
SCALE 6:1			SHEET 1 OF 1
REV G1			

单击下面可查看定价，库存，交付和生命周期等信息

[>>TE Connectivity\(泰科\)](#)