

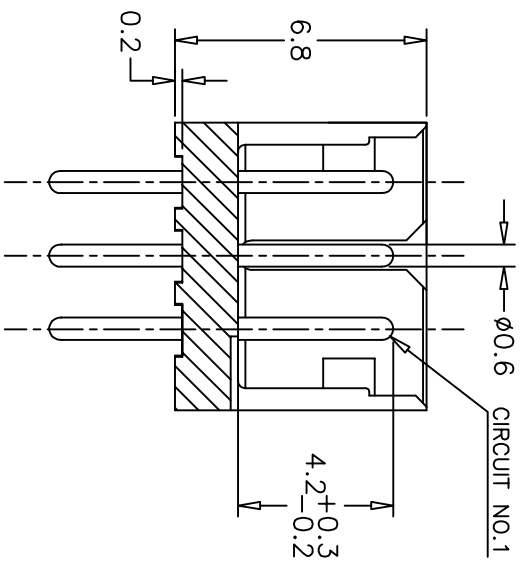
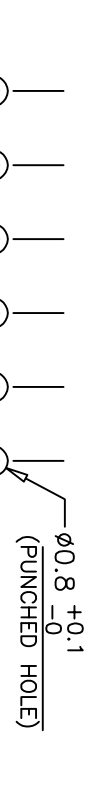
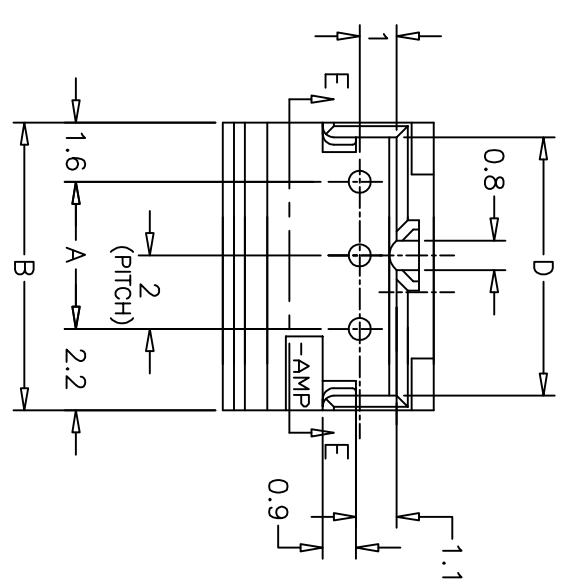
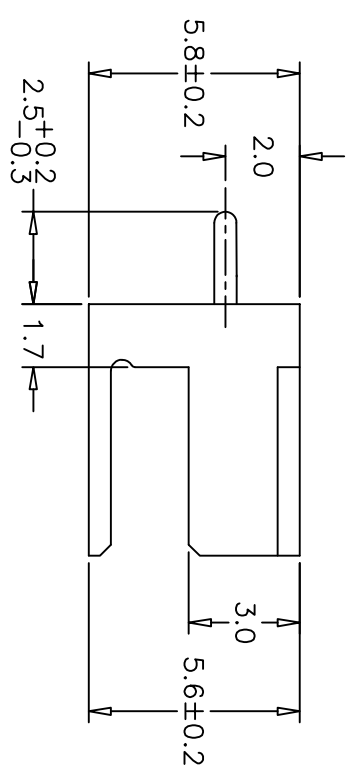
THIS DRAWING IS UNPUBLISHED.
 © COPYRIGHT - BY TYCO ELECTRONICS CORPORATION. ALL RIGHTS RESERVED.

RELEASED FOR PUBLICATION

LOC ES
 DIST 00

REVISIONS

P	LTR	DESCRIPTION	DATE	DMN	APVD
A1		REVISED BY ECR-13-016196	10FEB14	T.Q	W.H



3 POS.
 (SECT. E-E)

RECOMMENDABLE P.C. BOARD LAYOUT
 (PCB THK : 0.8-1.6)

TOLERANCES UNLESS OTHERWISE SPECIFIED:
 10> * : ±0.2
 30> * > 10 : ±0.25
 100> * > 30 : ±0.3
 ANGEL : ±3°

THIS DRAWING IS A CONTROLLED DOCUMENT.

DIMENSIONS: MM
 TOLERANCES UNLESS OTHERWISE SPECIFIED:

PLC	FINISH	TOLERANCES UNLESS OTHERWISE SPECIFIED:
0 PLC	4 R.C	±
1 PLC	3 R.C	±
2 PLC	2 R.C	±
3 PLC	1 R.C	±
4 PLC	0 R.C	±

MATERIAL: SEE NOTE
 FINISH: SEE NOTE

- NOTES:
 1 MATERIAL : HOUSING-66 NYLON (UL94V-0)
 POST -TIN BRASS
 2 THIS PRODUCT IS SHORT TINE OF P/N 2921352
 3 APPLICABLE RECEPTACLE : P/N 173977

COLOR	P/N	POS.	A	B	C	D
BLUE	2-292135-3	3	4	7.8	—	7.0
NATURAL (WHITE)	1-292135-2	12	22	25.8	—	25.0
	292135-3	3	4	7.8	—	7.0

DMN S.XU 31JAN03
 CHK S.YAO 31JAN03
 APVD T.SASAKI 31JAN03
 PRODUCT SPEC 108-60016
 APPLICATION SPEC

POST HEADER ASS'y (BOX-V TYPE) SHORT TINE
 AMP CT CONNECTOR 2mm PITCH

NAME: POST HEADER ASS'y (BOX-V TYPE) SHORT TINE
 AMP CT CONNECTOR 2mm PITCH
 SIZE: A3
 CAGE CODE: 00779
 DRAWING NO: 292135
 SCALE: 5:1
 SHEET: 1 OF 1
 REV: A1

单击下面可查看定价，库存，交付和生命周期等信息

[>>TE Connectivity\(泰科\)](#)