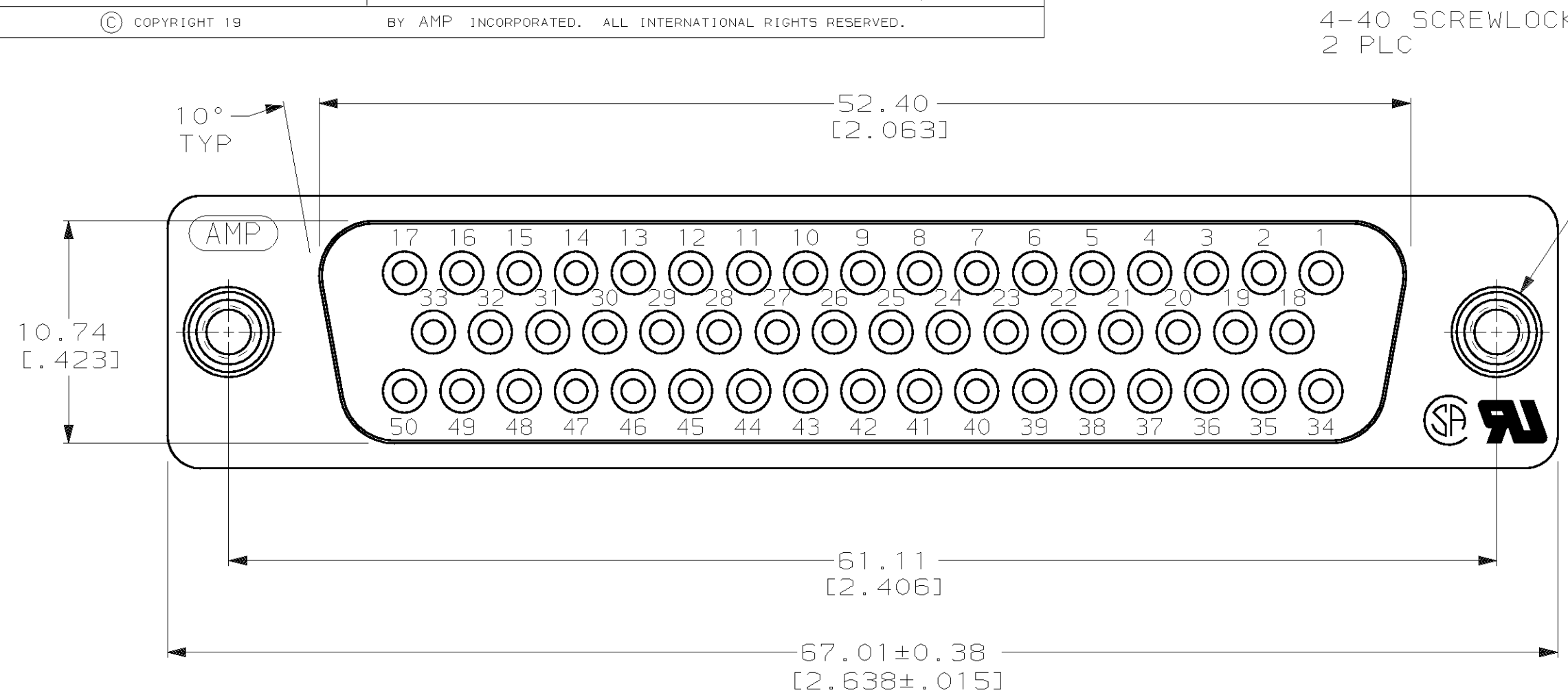
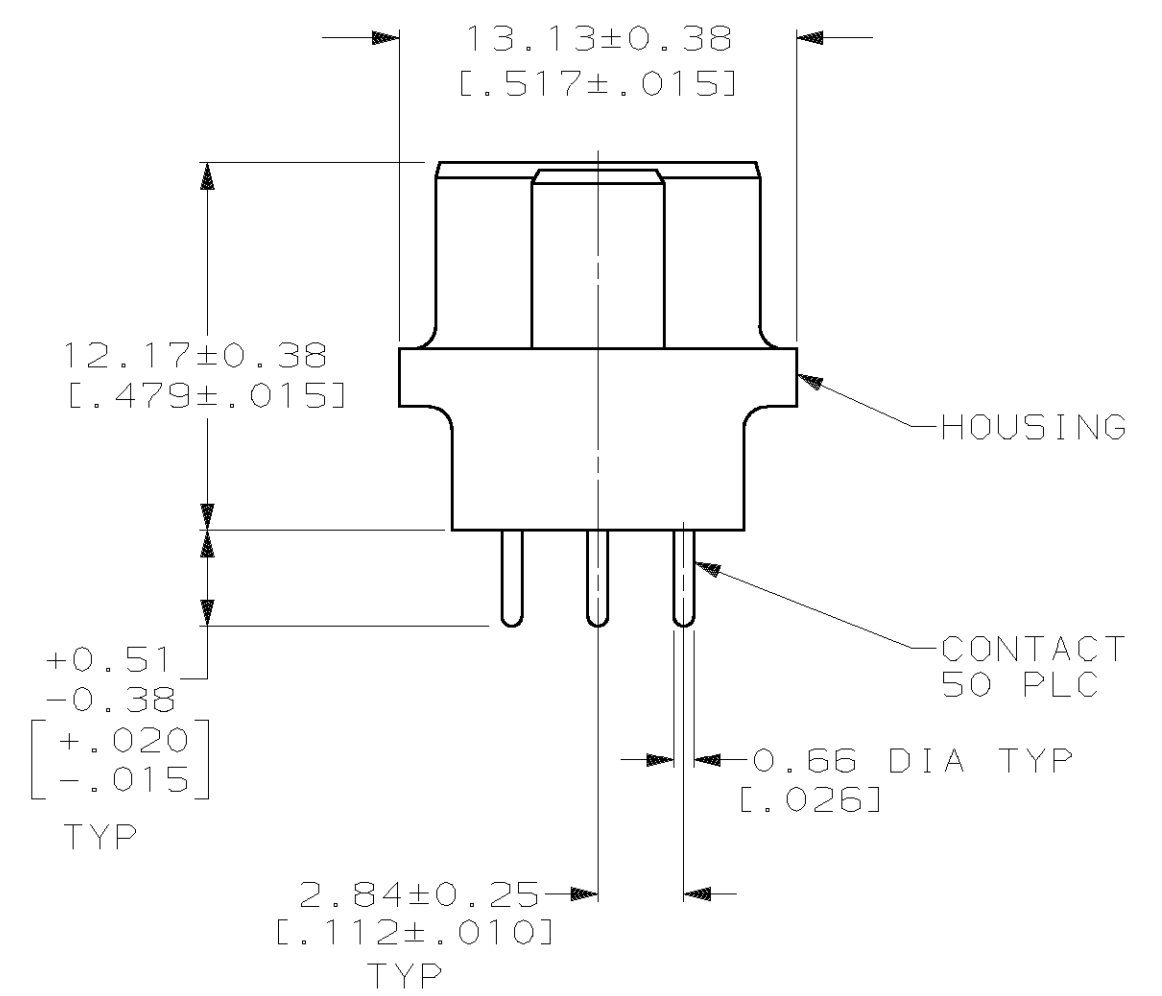
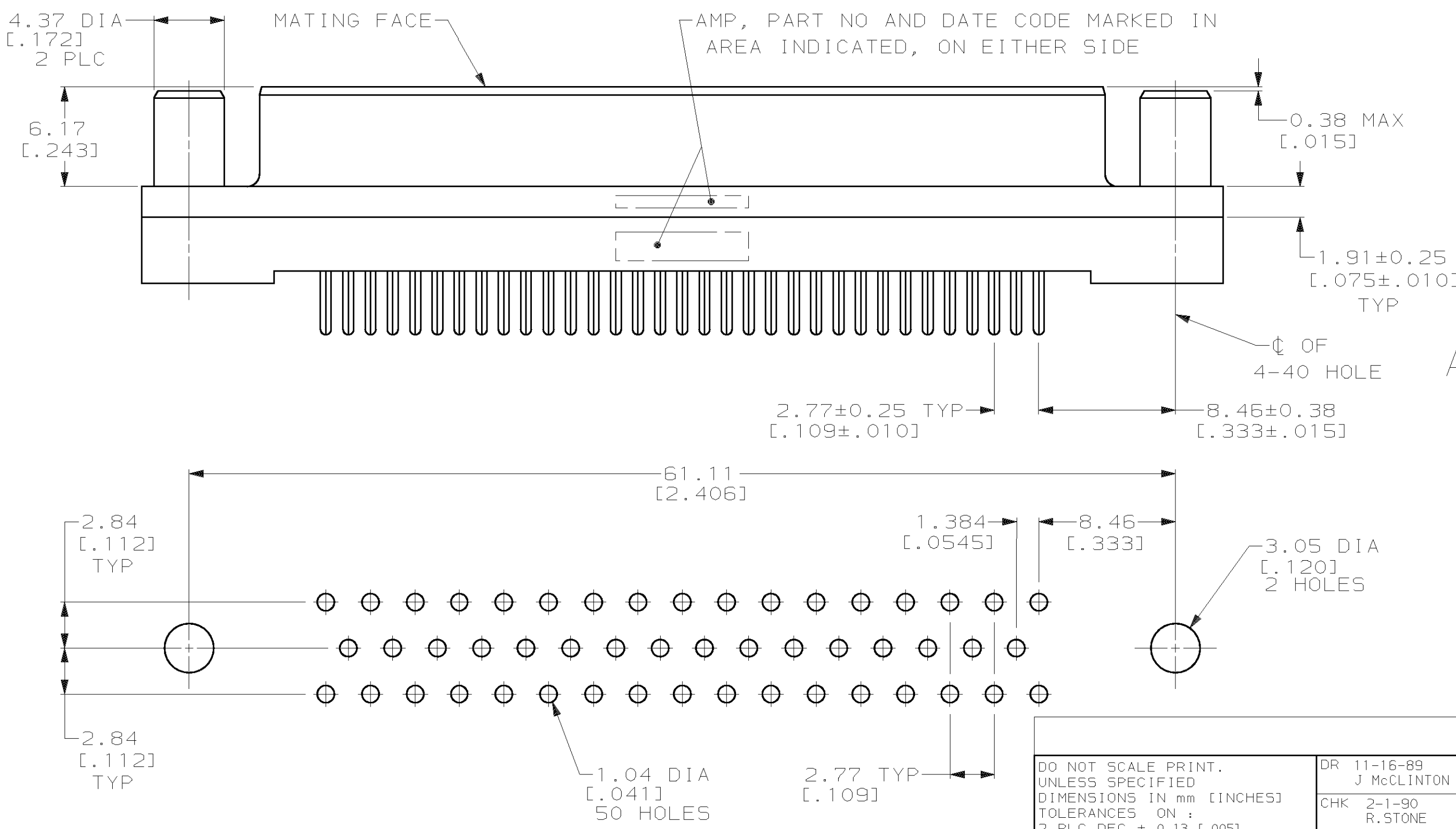


THIS DRAWING IS UNPUBLISHED. RELEASED FOR PUBLICATION
 © COPYRIGHT 19 BY AMP INCORPORATED. ALL INTERNATIONAL RIGHTS RESERVED.

LOC		DIST		P		F		ZONE		LTR		REVISIONS			
GP		00										DESCRIPTION	DATE	APPD	
												G	REVISED PER EC 0513-0017-03	12MAY03	JG



- 1 HOUSING: BLACK POLYESTER, UL 94V-0 RATED; CONTACTS: PHOSPHOR BRONZE PER QQ-B-750; SCREWLOCKS: BRASS PER QQ-B-626.
- 2 GOLD PLATING PER MIL-G-45204, TIN PLATING PER MIL-T-10727, NICKEL PLATING PER QQ-N-290, COPPER PLATING PER MIL-C-14550.
- 3 GOLD FLASH FOR A LENGTH OF 2.54[.100] MIN FROM MATING END, 2.54µm[.000100] MIN TIN OR TIN-LEAD FOR A LENGTH OF DIMENSION A FROM OPPOSITE END, ALL OVER 1.27µm[.000050] MIN NICKEL.
- 4 0.76µm[.000030] MIN GOLD FOR A LENGTH OF 2.54[.100] MIN FROM MATING END, 2.54µm[.000100] MIN TIN OR TIN-LEAD FOR A LENGTH OF DIMENSION A FROM OPPOSITE END, ALL OVER 1.27µm[.000050] MIN NICKEL.
- 5 1.27µm[.000050] MIN NICKEL OVER COPPER FLASH.



	A	CONTACT FINISH	PART NO
OBSOLETE	6.35 [.250]	4	745080-8
OBSOLETE	6.35 [.250]	3	745080-7
	4.32 [.170]	4	745080-6
OBSOLETE	4.32 [.170]	3	745080-5
	3.18 [.125]	4	745080-4
OBSOLETE	3.18 [.125]	3	745080-3

RECOMMENDED PC BOARD MOUNTING DIMENSIONS

DO NOT SCALE PRINT. UNLESS SPECIFIED DIMENSIONS IN mm [INCHES] TOLERANCES ON:
 2 PLC DEC ± 0.13 [.005]
 3 PLC DEC ± -
 ANGLES ± 2°

FINISH 1
 CONTACT: SEE TABLE
 SCREWLOCK: 5

DR 11-16-89
 J McCLINTON
 CHK 2-1-90
 R.STONE
 APPD 2-2-90
 S.SCHIEFFERLY
 APPD 2-2-90
 C.ROHDE
 PRODUCT SPEC
 108-40025
 APPLICATION SPEC
 -
 WEIGHT -

AMP AMP INCORPORATED
 Harrisburg, Pa. 17105

NAME
 RECEPTACLE ASSEMBLY, SIZE 5,
 50 POSN, VERTICAL,
 AMPLIMITE® HD-20

SIZE **C** CAGE CODE 00779 DRAWING NO 745080
 SCALE 4:1 SHEET 1 OF 1

单击下面可查看定价，库存，交付和生命周期等信息

[>>TE Connectivity\(泰科\)](#)